

Turning Demographic Comparison

Session Name: Volusia Final Results Age Demo.tpz

Created: 7/3/2007 3:10 PM

1.) How does it feel to get up to attend an event on a Saturday morning? Terrific

	Terrific	OK	Fair	Poor	Are you	Total
20-30	1	0	0	1	3	5
31-40	1	2	2	0	6	11
41-50	3	7	1	1	17	29
51-60	11	8	2	1	19	41
61-70	4	6	3	2	13	28
71-80	2	0	0	0	0	2
81-90	1	0	0	0	0	1
Over 90	0	0	0	0	1	1

2.) What is your age?

	20-30	31-40	41-50	51-60	61-70	71-80	81-90	Over 90	Total
20-30	6	0	0	0	0	0	0	0	6
31-40	0	11	0	0	0	0	0	0	11
41-50	0	0	30	0	0	0	0	0	30
51-60	0	0	0	45	0	0	0	0	45
61-70	0	0	0	0	31	0	0	0	31
71-80	0	0	0	0	0	2	0	0	2
81-90	0	0	0	0	0	0	1	0	1
Over 90	0	0	0	0	0	0	0	1	1

3.) How long have you lived in Volusia County?

	Non-	Less than 1	1-2 Years	3-5 Years	6-10 Years	11-20 Years	20+ Years	Total
20-30	0	1	0	1	1	2	1	6
31-40	0	0	1	3	1	1	5	11
41-50	1	1	1	2	5	9	9	28
51-60	0	2	3	4	3	8	22	42
61-70	2	1	0	4	4	4	15	30
71-80	0	0	0	0	0	0	2	2
81-90	0	0	0	0	0	1	0	1
Over 90	0	0	0	0	0	0	1	1

4.) What do you do for a living?

	Public Sector -Elected Official	Public Sector - Staff	Private Sector	Education	Community Based Organization	Other	Retired	Total
20-30	0	3	1	0	2	0	0	6
31-40	0	7	3	0	0	0	0	10
41-50	5	10	9	0	2	3	1	30
51-60	6	13	12	3	4	2	3	43
61-70	7	3	6	2	0	1	10	29
71-80	0	0	0	2	0	0	0	2
81-90	1	0	0	0	0	0	0	1
Over 90	0	0	1	0	0	0	0	1

5.) Annual Income?

	Less than 25,000	25-50,000	51-75,000	76-100,000	101-125,000	126-150,000	Above 150,000	Total
20-30	1	4	1	0	0	0	0	6
31-40	0	2	3	2	3	0	1	11
41-50	4	4	5	7	1	3	5	29
51-60	2	3	9	8	7	6	8	43
61-70	0	6	4	3	5	3	7	28
71-80	0	0	0	0	1	0	0	1
81-90	0	1	0	0	0	0	0	1
Over 90	0	0	0	0	1	0	0	1

6.) Where do you work?

	Volusia County	Orange County	Seminole County	Brevard County	Flagler County	Lake County	Osceola County	Duval County	Other	Total
20-30	6	0	0	0	0	0	0	0	0	6
31-40	11	0	0	0	0	0	0	0	0	11
41-50	23	1	1	0	0	0	0	0	1	26
51-60	35	0	2	0	0	0	0	0	3	40
61-70	21	0	0	0	1	0	0	0	4	26
71-80	2	0	0	0	0	0	0	0	0	2
81-90	1	0	0	0	0	0	0	0	0	1
Over 90	1	0	0	0	0	0	0	0	0	1

7.) How long does it take you to get to work?

	5-10	11-15	16-20	21-25 minutes	26-30 minutes	31-45	46-60	60-75	Above 75	Total
20-30	3	1	0	0	1	1	0	0	0	6
31-40	5	1	3	0	1	0	0	0	0	10
41-50	7	5	2	2	2	2	1	0	0	21
51-60	8	10	3	6	1	6	2	0	0	36
61-70	7	2	4	2	1	2	1	1	0	20
71-80	1	1	0	0	0	0	0	0	0	2
81-90	1	0	0	0	0	0	0	0	0	1
Over 90	0	0	0	0	0	0	0	0	0	0

8.) What is the population of the 7 County Central Florida Region?

	2.5 million	3.5 million	4.5 million	5.5 million	Total
20-30	0	1	1	4	6
31-40	0	5	5	0	10
41-50	1	8	9	5	23
51-60	5	12	12	8	37
61-70	3	5	8	6	22
71-80	0	0	0	2	2
81-90	0	1	0	0	1
Over 90	0	0	1	0	1

9.) What is the projected population of Central Florida in 2020?

	2.8 million	3.8 million	4.8 million	5.8 million	Total
20-30	0	0	2	4	6
31-40	0	0	4	6	10
41-50	0	0	15	13	28
51-60	0	0	20	23	43
61-70	0	1	12	11	24
71-80	0	0	0	1	1
81-90	0	0	1	0	1
Over 90	0	0	0	0	0

10.) What is the projected population of Central Florida in 2050?

	3.1 million	5.1 million	7.1 million	9.1 million	Total
20-30	0	1	3	1	5
31-40	0	1	8	1	10
41-50	1	5	18	3	27
51-60	0	3	34	5	42
61-70	1	3	22	2	28
71-80	0	0	1	0	1
81-90	0	0	1	0	1
Over 90	0	0	0	0	0

11.) Why are you here – Best Answer?

	I care about the future of my neighborhood	I care about protecting the environment	I care about how we grow as a county	I care about how we grow in relation to the region	I want our county to be more economically competitive	I want to network with leaders and members of my community	I care about education	Other	Total
20-30	1	1	2	0	0	0	0	2	6
31-40	1	3	4	1	0	0	0	1	10
41-50	3	8	8	4	3	0	0	3	29
51-60	1	8	19	5	4	3	0	3	43
61-70	4	7	10	7	1	0	1	1	31
71-80	1	0	0	1	0	0	0	0	2
81-90	0	0	1	0	0	0	0	0	1
Over 90	0	1	0	0	0	0	0	0	1

12.) How informed am I about myregion.org? Scale of 1 to 5, 5 well informed and 1 know almost nothing

	Know almost nothing	Little knowledge	Moderate knowledge	Well informed	Total
20-30	2	2	1	1	6
31-40	1	3	4	3	11
41-50	9	6	9	5	29
51-60	6	7	12	17	42
61-70	5	7	13	4	29
71-80	0	0	0	1	1
81-90	0	0	0	1	1
Over 90	0	0	0	0	0

13.) How informed am I about growth planning and priorities in Volusia?

	Know almost nothing	Little knowledge	Moderate knowledge	Well informed	Total
20-30	0	1	2	2	5
31-40	0	3	2	4	9
41-50	0	9	12	5	26
51-60	1	4	13	25	43
61-70	1	6	12	11	30
71-80	0	0	0	1	1
81-90	0	0	0	1	1
Over 90	0	0	0	0	0

14.) Do you support minimum environmental standards countywide?

	Yes	No	Undecided	Uninformed	Total
20-30	4	1	0	1	6
31-40	9	1	0	1	11
41-50	20	4	2	0	26
51-60	34	3	5	2	44
61-70	23	0	0	2	25
71-80	2	0	0	0	2
81-90	1	0	0	0	1
Over 90	1	0	0	0	1

15.) Do you believe protecting natural areas will benefit your quality of life?

	Yes	No	Undecided	Uninformed	Total
20-30	6	0	0	0	6
31-40	11	0	0	0	11
41-50	26	3	0	0	29
51-60	38	1	2	0	41
61-70	25	1	0	0	26
71-80	2	0	0	0	2
81-90	1	0	0	0	1
Over 90	1	0	0	0	1

16.) Do you support smart growth tools such as transfer of development rights to protect rural and natural areas?

	Yes	No	Undecided	Uninformed	Total
20-30	4	0	0	2	6
31-40	8	0	1	1	10
41-50	15	1	5	2	23
51-60	29	6	8	1	44
61-70	14	4	5	1	24
71-80	1	0	0	0	1
81-90	1	0	0	0	1
Over 90	0	0	0	0	0

17.) Re-poll: How long does it take you to get to work?

	0-5 minutes	5-10 minutes	11-15 minutes	16-20 minutes	21-25 minutes	26-30 minutes	31-45 minutes	46-60 minutes	60-75 minutes	Do not Work	Total
20-30	1	2	1	0	0	1	1	0	0	0	6
31-40	2	3	1	4	0	1	0	0	0	0	11
41-50	6	4	4	2	2	0	2	1	0	3	24
51-60	5	8	7	3	3	1	4	2	0	2	35
61-70	3	5	2	3	2	1	0	1	1	7	25
71-80	1	0	0	0	0	0	0	0	0	0	1
81-90	0	1	0	0	0	0	0	0	0	0	1
Over 90	1	0	0	0	0	0	0	0	0	0	1

18.) What is the population of Volusia County?

	390,000	490,000	590,000	690,000	Total
20-30	0	5	1	0	6
31-40	1	4	4	0	9
41-50	7	14	3	0	24
51-60	10	23	3	0	36
61-70	7	15	3	0	25
71-80	0	2	0	0	2
81-90	0	1	0	0	1
Over 90	0	0	0	0	0

19.) What is the projected population of Volusia County in 2020?

	333,000	533,000	633,000	733,000	Total
20-30	0	1	4	1	6
31-40	0	2	4	3	9
41-50	0	4	16	3	23
51-60	0	7	23	4	34
61-70	0	13	11	3	27
71-80	0	0	2	0	2
81-90	0	1	0	0	1
Over 90	0	0	0	0	0

20.) What is the projected population of Volusia County in 2050?

	574,000	674,000	774,000	874,000	Total
20-30	0	1	4	1	6
31-40	0	0	6	4	10
41-50	0	2	13	7	22
51-60	0	1	19	14	34
61-70	0	1	22	4	27
71-80	0	0	1	1	2
81-90	0	0	1	0	1
Over 90	0	0	0	0	0

21.) Do you believe sustainable communities will support a strong local economy?

	Yes	No	Don't Know	Total
20-30	5	0	1	6
31-40	10	0	0	10
41-50	20	0	6	26
51-60	27	2	6	35
61-70	19	2	5	26
71-80	1	0	1	2
81-90	1	0	0	1
Over 90	0	0	0	0

22.) How many days per month do you leave the borders of Volusia for commercial, educational, entertainment, healthcare or other activities?

	0	1-5	6-10	11-15	16-20	21-25	25-30	31 and up.	Total
20-30	0	2	3	0	0	1	0	0	6
31-40	1	6	2	0	0	0	0	1	10
41-50	1	17	2	3	0	1	0	1	25
51-60	8	18	6	2	0	0	1	1	36
61-70	1	17	2	3	0	1	0	1	25
71-80	0	1	0	0	0	0	0	0	1
81-90	0	1	0	0	0	0	0	0	1
Over 90	0	0	0	0	0	0	0	0	0

23.) Where do you reside?

	East Volusia	West Volusia	Don't Reside in Volusia	Total
20-30	5	1	0	6
31-40	6	4	1	11
41-50	11	13	2	26
51-60	27	11	2	40
61-70	14	12	1	27
71-80	1	1	0	2
81-90	0	1	0	1
Over 90	0	0	0	0

24.) What is VCOG:

	Very Collegial Operating Group	Vast Collection of Gerontologists	Volusia Council of Governments	Volusia Community on Growth	Total
20-30	0	0	6	0	6
31-40	0	0	11	0	11
41-50	0	2	23	1	26
51-60	0	2	37	1	40
61-70	0	2	24	1	27
71-80	0	0	2	0	2
81-90	0	0	1	0	1
Over 90	0	0	0	0	0

25.) Accelerating deployment of the right transportation technology will make a difference in achieving a sustainable future

	Yes	No	Unsure	Uninformed	Total
20-30	3	0	0	0	3
31-40	6	0	1	0	7
41-50	17	0	3	0	20
51-60	29	1	0	1	31
61-70	12	2	4	0	18
71-80	2	0	0	0	2
81-90	1	0	0	0	1
Over 90	0	1	0	0	1

26.) Commuter rail is a vital component of our sustainable community

	Yes	No	Unsure	Uninformed	Total
20-30	2	0	1	0	3
31-40	6	0	1	0	7
41-50	15	2	2	0	19
51-60	27	2	3	0	32
61-70	16	4	3	0	23
71-80	1	0	0	0	1
81-90	1	0	0	0	1
Over 90	0	1	0	0	1

27.) I understand how A & B operate and what scenarios they represent

	Yes	No	Unsure	Uninformed	Total
20-30	1	0	1	1	3
31-40	4	2	1	0	7
41-50	10	2	7	0	19
51-60	23	2	6	0	31
61-70	14	1	8	1	24
71-80	2	0	0	0	2
81-90	0	0	1	0	1
Over 90	0	0	0	1	1

28.) Communicating the complexity of systems and infrastructure is our most serious barrier to success

	Yes	No	Unsure	Uninformed	Total
20-30	3	0	0	0	3
31-40	2	3	1	0	6
41-50	11	6	2	0	19
51-60	21	9	2	0	32
61-70	15	4	4	0	23
71-80	2	0	0	0	2
81-90	1	0	0	0	1
Over 90	1	0	0	0	1

29.) We can't achieve our vision without culture change

	Agree	Disagree	Unsure	Uninformed	Total
20-30	3	0	0	0	3
31-40	6	1	0	0	7
41-50	17	2	0	0	19
51-60	29	1	1	0	31
61-70	18	3	2	0	23
71-80	1	1	0	0	2
81-90	1	0	0	0	1
Over 90	1	0	0	0	1

30.) Achieving our vision requires:

	K-12 performanc e	Best in nation	Best in Florida	Best in region	Stay the same	Not a factor	Total
20-30	1	0	0	1	0	1	3
31-40	2	2	1	1	0	1	7
41-50	3	3	3	7	1	3	20
51-60	6	9	8	6	0	2	31
61-70	4	4	10	3	0	3	24
71-80	1	0	0	1	0	0	2
81-90	0	0	1	0	0	0	1
Over 90	1	0	0	0	0	0	1

31.) I want to keep up with this effort

	Yes	No	Unsure	Uninformed	Total
20-30	3	0	0	0	3
31-40	7	0	0	0	7
41-50	19	1	1	0	21
51-60	30	0	0	0	30
61-70	20	1	0	0	21
71-80	2	0	0	0	2
81-90	0	0	0	0	0
Over 90	1	0	0	0	1

32.) What is the most important and credible message for your neighbor?

	We can achieve our vision for low or no cost	Our community governments can and are working together	Our community is behind the vision	Other communities have or are doing this with success	Our region cares	State policy and regulations are supportive	Other	Total
20-30	0	2	0	0	0	0	1	3
31-40	0	3	0	2	1	0	1	7
41-50	0	7	4	4	3	0	2	20
51-60	0	15	3	3	2	1	7	31
61-70	0	9	1	2	6	0	4	22
71-80	0	0	1	0	1	0	0	2
81-90	0	0	0	0	1	0	0	1
Over 90	0	0	0	0	0	0	0	0

33.) Would you pay the extra money to bypass congestion?

	Yes	No	Unsure	Uninformed	Total
20-30	1	0	2	0	3
31-40	5	1	0	0	6
41-50	19	1	1	0	21
51-60	21	5	3	0	29
61-70	16	5	2	0	23
71-80	2	0	0	0	2
81-90	1	0	0	0	1
Over 90	0	1	0	0	1

34.) How informed am I about myregion.org? Scale of 1 to 4, 4 well informed and 1 know almost nothing

	Know almost nothing	Little knowledge	Moderate knowledge	Well informed	Total
20-30	0	2	1	0	3
31-40	0	0	4	3	7
41-50	2	3	10	6	21
51-60	0	4	12	14	30
61-70	1	1	14	7	23
71-80	0	0	1	1	2
81-90	0	0	0	1	1
Over 90	1	0	0	0	1

35.) How informed am I about growth planning and priorities in Volusia?

	Know almost nothing	Little knowledge	Moderate knowledge	Well informed	Total
20-30	0	1	1	1	3
31-40	0	0	3	4	7
41-50	0	1	12	8	21
51-60	0	1	9	21	31
61-70	0	0	11	9	20
71-80	0	0	0	1	1
81-90	0	0	0	1	1
Over 90	0	0	1	0	1

36.) Do you support minimum environmental standards countywide?

	Yes	No	Undecided	Uninformed	Total
20-30	2	1	0	0	3
31-40	6	1	0	0	7
41-50	17	1	1	0	19
51-60	26	1	2	0	29
61-70	21	0	1	0	22
71-80	1	0	0	0	1
81-90	1	0	0	0	1
Over 90	0	0	0	0	0

37.) Do you believe protecting natural areas will benefit your quality of life?

	Yes	No	Undecided	Uninformed	Total
20-30	2	1	0	0	3
31-40	7	0	0	0	7
41-50	18	1	0	0	19
51-60	31	0	0	0	31
61-70	21	0	0	0	21
71-80	2	0	0	0	2
81-90	1	0	0	0	1
Over 90	1	0	0	0	1

38.) Do you support smart growth tools such as transfer of development rights to protect rural and natural areas?

	Yes	No	Undecided	Uninformed	Total
20-30	2	0	0	1	3
31-40	4	0	2	0	6
41-50	15	2	3	0	20
51-60	18	2	10	0	30
61-70	17	2	4	0	23
71-80	2	0	0	0	2
81-90	1	0	0	0	1
Over 90	1	0	0	0	1

39.) How did you hear about this Summit?

	Radio	TV	Internet	Print Media – Newspaper	Word of Mouth or Phone	Written Invitation	Recommen- dation or Notice by Association , Group, Not-for- profit, or Coalition	Other	Total
20-30	0	0	0	0	0	0	3	0	3
31-40	0	0	0	0	1	3	2	0	6
41-50	0	0	7	2	3	2	4	1	19
51-60	1	0	4	0	3	4	10	1	23
61-70	0	0	6	3	2	3	4	0	18
71-80	0	0	0	0	0	1	1	0	2
81-90	0	0	0	0	0	1	0	0	1
Over 90	0	0	0	1	0	0	0	0	1

40.) How did you hear about this Summit?

	Radio	TV	Internet	Print Media – Newspaper	Word of Mouth or Phone	Written Invitation	Recommen- dation or Notice by Association , Group, Not-for- profit, or Coalition	Other	Total
20-30	0	0	0	0	0	0	3	0	3
31-40	0	0	2	0	1	1	1	1	6
41-50	0	0	12	2	0	1	4	0	19
51-60	1	0	18	1	3	1	5	1	30
61-70	0	0	13	3	2	2	2	0	22
71-80	0	0	1	0	0	0	0	0	1
81-90	0	0	0	0	0	0	1	0	1
Over 90	0	0	0	1	0	0	0	0	1

41.) I Feel I have improved access to data and information going forward

	Yes	No	no change	unsure	Total
20-30	2	0	1	0	3
31-40	5	0	1	0	6
41-50	16	1	3	1	21
51-60	24	0	5	1	30
61-70	20	0	3	0	23
71-80	2	0	0	0	2
81-90	1	0	0	0	1
Over 90	0	1	0	0	1

42.) I think the best way to keep up with trends, ideas, and developments regarding Voluisa's growth is:

	Through a central web site or portal	Through general media – electronic	Print media	Radio/TV	Through VCOG Meetings	Through Summits like this	Through Written newsletters and notices	Through all partner, government, and organizational web sites	Through myregion.org	Other	Total
20-30	1	0	0	0	1	1	0	0	0	0	3
31-40	3	1	0	0	0	1	0	1	0	0	6
41-50	6	1	1	0	1	1	1	2	0	0	13
51-60	4	2	0	0	0	3	0	3	1	0	13
61-70	6	1	3	0	0	2	0	3	0	0	15
71-80	0	0	0	0	0	1	0	0	1	0	2
81-90	0	0	1	0	0	0	0	0	0	0	1
Over 90	0	0	0	0	0	0	0	0	0	0	0

43.) I think the best way to keep up with trends, ideas, and developments regarding Voluisa's growth is:

	Through a central web site or portal	Through general media – electronic	Print media	Radio/TV	Through VCOG Meetings	Through Summits like this	Through Written newsletters and notices	Through all partner, government, and organizational web sites	Through myregion.org	Other	Total
20-30	0	0	0	0	1	1	0	0	0	0	2
31-40	2	2	0	0	0	0	0	0	0	0	4
41-50	5	3	2	0	1	3	1	2	0	0	17
51-60	8	6	2	0	1	5	1	3	2	0	28
61-70	6	5	2	0	0	1	0	3	0	0	17
71-80	0	1	0	0	0	0	0	0	0	0	1
81-90	0	0	0	0	0	0	0	0	0	0	0
Over 90	1	0	0	0	0	0	0	0	0	0	1

44.) For me personally - The data, information, and updates provided in this summit were:

	Of no use	Of some use	Useful	Very useful	Total
20-30	0	1	2	0	3
31-40	0	2	2	2	6
41-50	2	3	7	7	19
51-60	0	7	13	11	31
61-70	0	3	9	9	21
71-80	0	0	0	2	2
81-90	0	0	0	1	1
Over 90	0	0	1	0	1

45.) As a team, Speakers, panelists, and facilitators were:

	Poor	Fair	Good	Excellent	Total
20-30	0	1	2	0	3
31-40	0	0	4	2	6
41-50	0	0	9	10	19
51-60	0	0	15	15	30
61-70	0	0	10	11	21
71-80	0	0	1	1	2
81-90	0	0	0	1	1
Over 90	0	0	1	0	1

46.) Workshops were:

	Poor	Fair	Good	Excellent	Total
20-30	0	1	1	1	3
31-40	0	1	3	2	6
41-50	0	1	14	4	19
51-60	0	5	15	10	30
61-70	0	2	12	8	22
71-80	0	0	1	1	2
81-90	0	0	1	0	1
Over 90	0	0	0	1	1

47.) How did you hear about this Summit?

	Radio	TV	Internet Web site driven	Internet email from event	Internet email from colleagues	Print Media – Newspaper	Word of Mouth or Phone	Written Invitation	Recommendation or Notice by Association, Group, Not-for-profit, or Coalition	Other	Total
20-30	0	0	0	0	0	0	0	0	2	1	3
31-40	0	0	0	2	1	0	1	1	1	0	6
41-50	0	0	2	5	7	2	1	0	3	0	20
51-60	2	0	0	12	7	1	2	1	4	2	31
61-70	0	0	1	9	3	3	2	1	2	0	21
71-80	0	0	0	0	1	0	1	0	0	0	2
81-90	0	0	0	1	0	0	0	0	0	0	1
Over 90	0	0	0	0	0	1	0	0	0	0	1

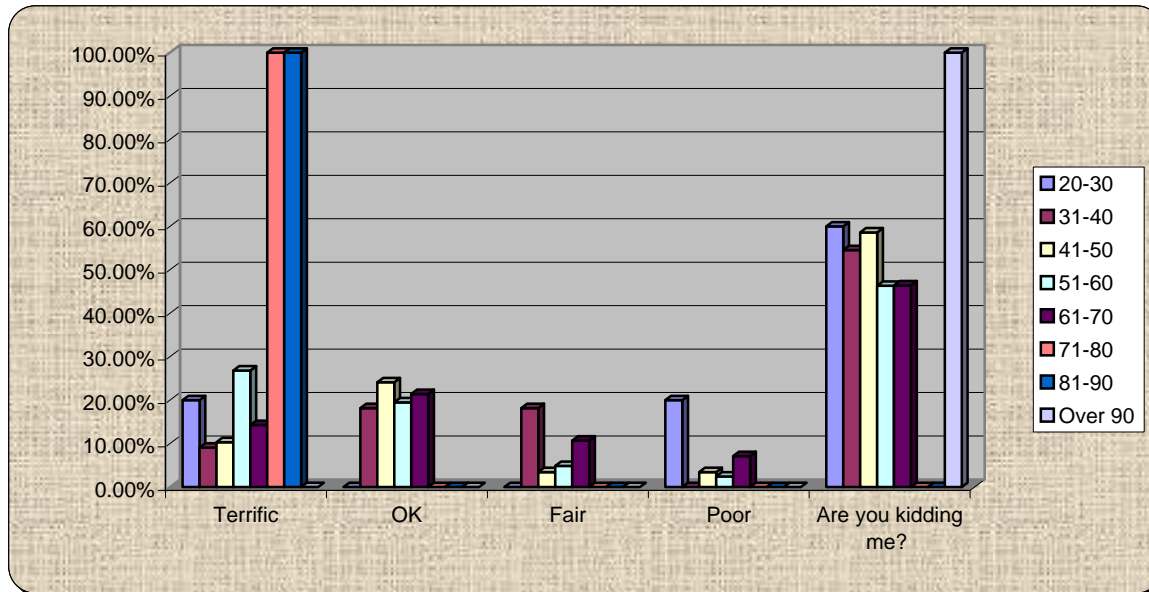
Turning Graphical Comparison

Session Name: Volusia Final Results Age Demo.tpz

Created: 7/3/2007 3:11 PM

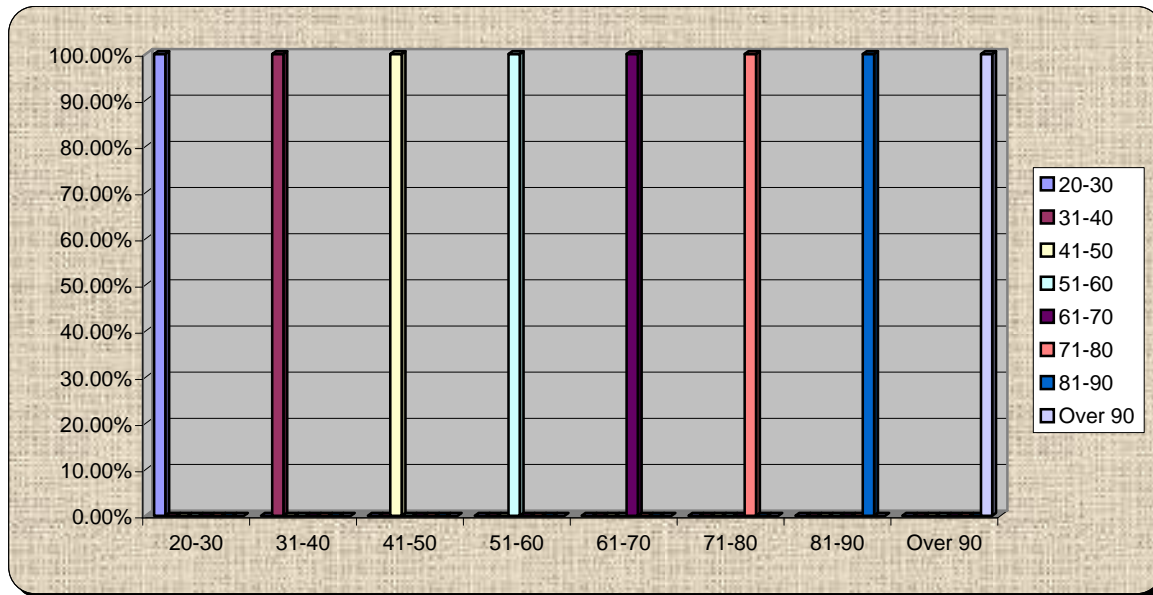
1.) How does it feel to get up to attend an event on a Saturday morning? Terrific

	Terrific	OK	Fair	Poor	Are you kidding me?
20-30	20.00%	0.00%	0.00%	20.00%	60.00%
31-40	9.09%	18.18%	18.18%	0.00%	54.55%
41-50	10.34%	24.14%	3.45%	3.45%	58.62%
51-60	26.83%	19.51%	4.88%	2.44%	46.34%
61-70	14.29%	21.43%	10.71%	7.14%	46.43%
71-80	100.00%	0.00%	0.00%	0.00%	0.00%
81-90	100.00%	0.00%	0.00%	0.00%	0.00%
Over 90	0.00%	0.00%	0.00%	0.00%	100.00%



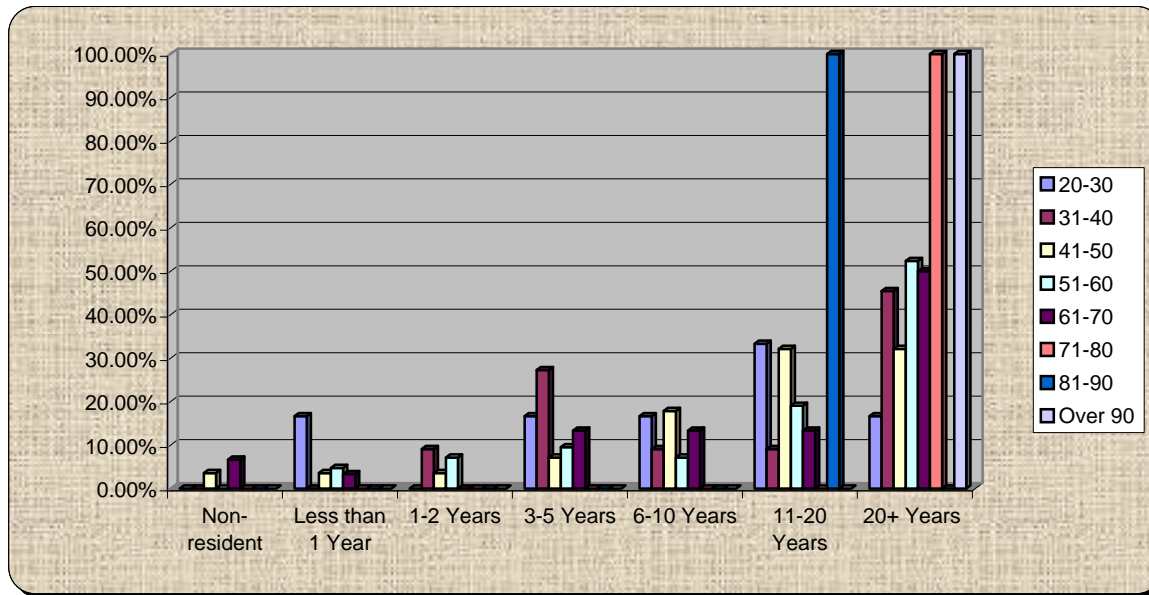
2.) What is your age?

	20-30	31-40	41-50	51-60	61-70	71-80	81-90	Over 90
20-30	100.00%	0.00%	0.00%	0.00%	0.00%	0.00%	0.00%	0.00%
31-40	0.00%	100.00%	0.00%	0.00%	0.00%	0.00%	0.00%	0.00%
41-50	0.00%	0.00%	100.00%	0.00%	0.00%	0.00%	0.00%	0.00%
51-60	0.00%	0.00%	0.00%	100.00%	0.00%	0.00%	0.00%	0.00%
61-70	0.00%	0.00%	0.00%	0.00%	100.00%	0.00%	0.00%	0.00%
71-80	0.00%	0.00%	0.00%	0.00%	0.00%	100.00%	0.00%	0.00%
81-90	0.00%	0.00%	0.00%	0.00%	0.00%	0.00%	100.00%	0.00%
Over 90	0.00%	0.00%	0.00%	0.00%	0.00%	0.00%	0.00%	100.00%



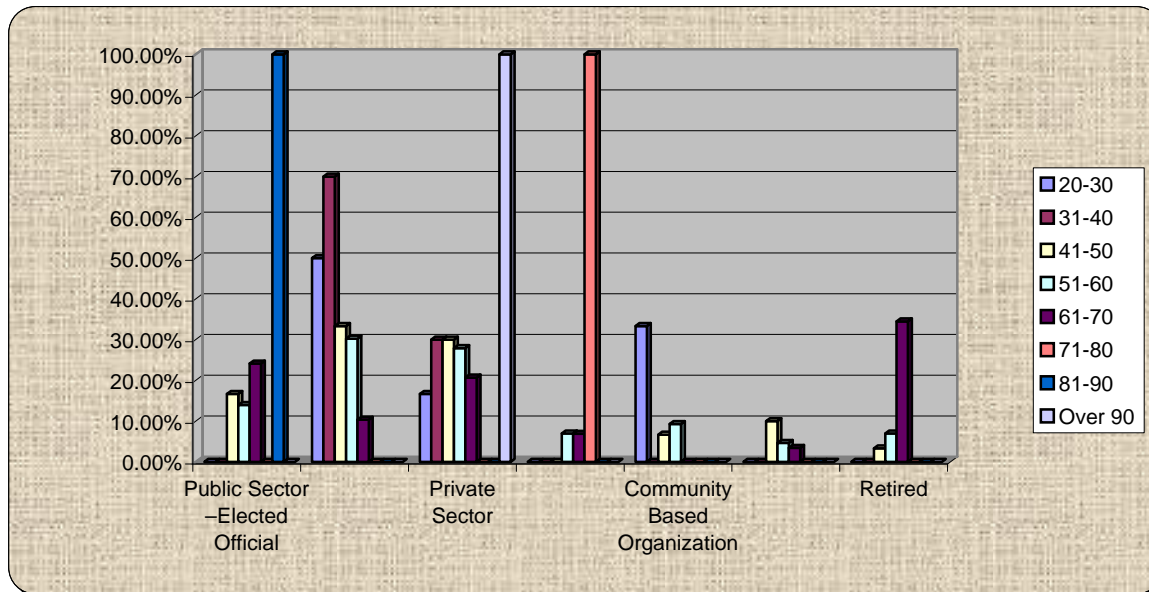
3.) How long have you lived in Volusia County?

	Non-resident	Less than 1 Year	1-2 Years	3-5 Years	6-10 Years	11-20 Years	20+ Years
20-30	0.00%	16.67%	0.00%	16.67%	16.67%	33.33%	16.67%
31-40	0.00%	0.00%	9.09%	27.27%	9.09%	9.09%	45.45%
41-50	3.57%	3.57%	3.57%	7.14%	17.86%	32.14%	32.14%
51-60	0.00%	4.76%	7.14%	9.52%	7.14%	19.05%	52.38%
61-70	6.67%	3.33%	0.00%	13.33%	13.33%	13.33%	50.00%
71-80	0.00%	0.00%	0.00%	0.00%	0.00%	0.00%	100.00%
81-90	0.00%	0.00%	0.00%	0.00%	0.00%	100.00%	0.00%
Over 90	0.00%	0.00%	0.00%	0.00%	0.00%	0.00%	100.00%



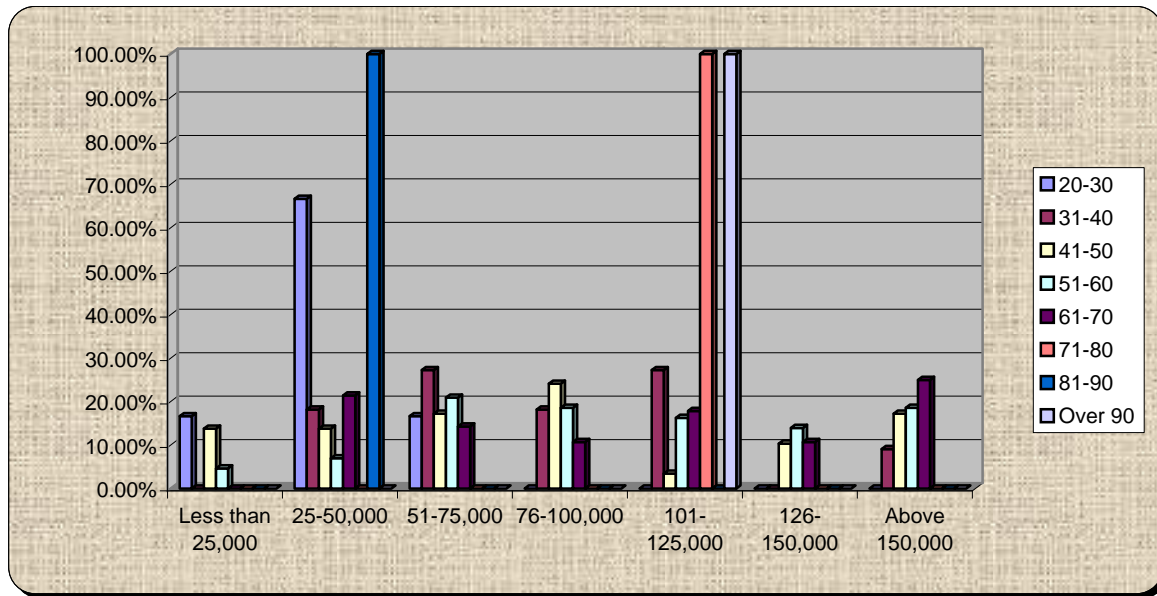
4.) What do you do for a living?

	Public Sector -Elected Official	Public Sector - Staff	Private Sector	Education	Community Based Organization	Other	Retired
20-30	0.00%	50.00%	16.67%	0.00%	33.33%	0.00%	0.00%
31-40	0.00%	70.00%	30.00%	0.00%	0.00%	0.00%	0.00%
41-50	16.67%	33.33%	30.00%	0.00%	6.67%	10.00%	3.33%
51-60	13.95%	30.23%	27.91%	6.98%	9.30%	4.65%	6.98%
61-70	24.14%	10.34%	20.69%	6.90%	0.00%	3.45%	34.48%
71-80	0.00%	0.00%	0.00%	100.00%	0.00%	0.00%	0.00%
81-90	100.00%	0.00%	0.00%	0.00%	0.00%	0.00%	0.00%
Over 90	0.00%	0.00%	100.00%	0.00%	0.00%	0.00%	0.00%



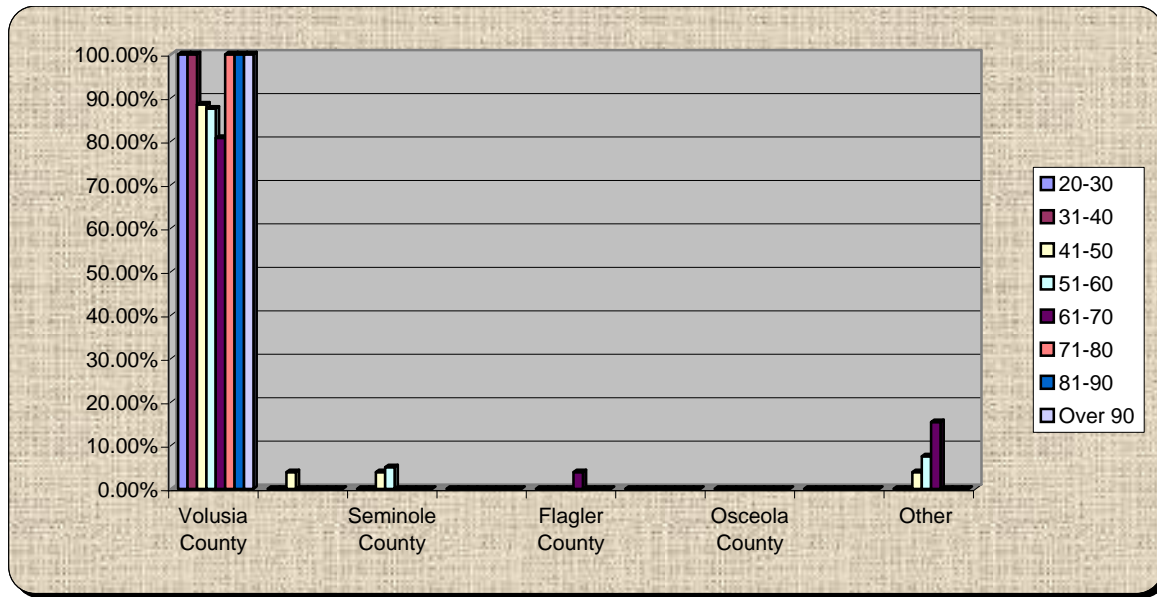
5.) Annual Income?

	Less than 25,000	25-50,000	51-75,000	76-100,000	101-125,000	126-150,000	Above 150,000
20-30	16.67%	66.67%	16.67%	0.00%	0.00%	0.00%	0.00%
31-40	0.00%	18.18%	27.27%	18.18%	27.27%	0.00%	9.09%
41-50	13.79%	13.79%	17.24%	24.14%	3.45%	10.34%	17.24%
51-60	4.65%	6.98%	20.93%	18.60%	16.28%	13.95%	18.60%
61-70	0.00%	21.43%	14.29%	10.71%	17.86%	10.71%	25.00%
71-80	0.00%	0.00%	0.00%	0.00%	100.00%	0.00%	0.00%
81-90	0.00%	100.00%	0.00%	0.00%	0.00%	0.00%	0.00%
Over 90	0.00%	0.00%	0.00%	0.00%	100.00%	0.00%	0.00%



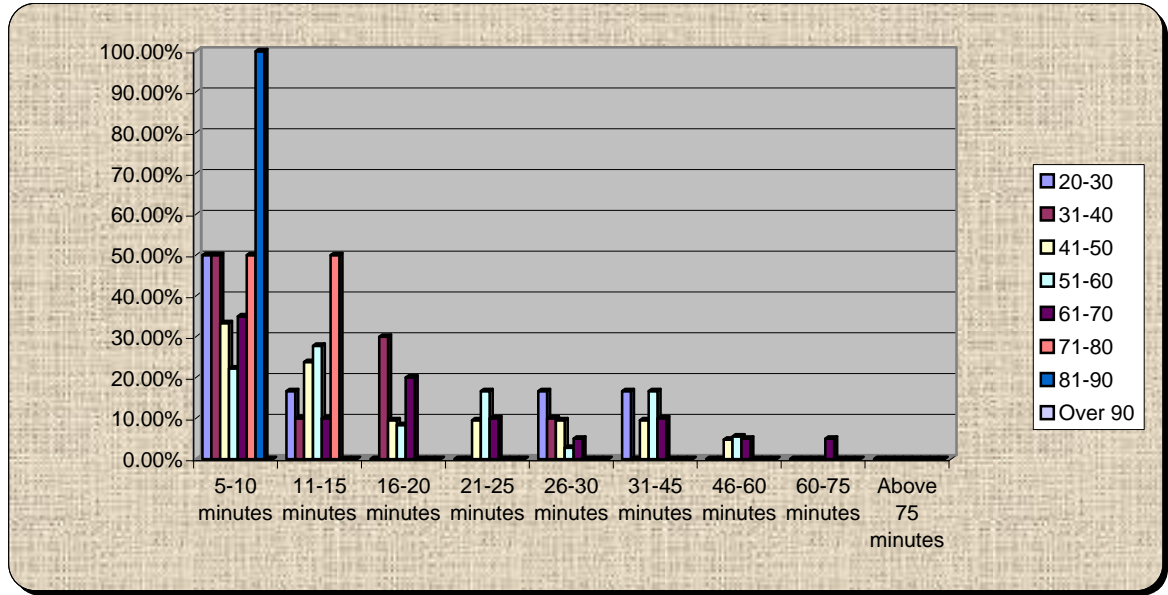
6.) Where do you work?

	Volusia County	Orange County	Seminole County	Brevard County	Flagler County	Lake County	Osceola County	Duval County	Other
20-30	100.00%	0.00%	0.00%	0.00%	0.00%	0.00%	0.00%	0.00%	0.00%
31-40	100.00%	0.00%	0.00%	0.00%	0.00%	0.00%	0.00%	0.00%	0.00%
41-50	88.46%	3.85%	3.85%	0.00%	0.00%	0.00%	0.00%	0.00%	3.85%
51-60	87.50%	0.00%	5.00%	0.00%	0.00%	0.00%	0.00%	0.00%	7.50%
61-70	80.77%	0.00%	0.00%	0.00%	3.85%	0.00%	0.00%	0.00%	15.38%
71-80	100.00%	0.00%	0.00%	0.00%	0.00%	0.00%	0.00%	0.00%	0.00%
81-90	100.00%	0.00%	0.00%	0.00%	0.00%	0.00%	0.00%	0.00%	0.00%
Over 90	100.00%	0.00%	0.00%	0.00%	0.00%	0.00%	0.00%	0.00%	0.00%



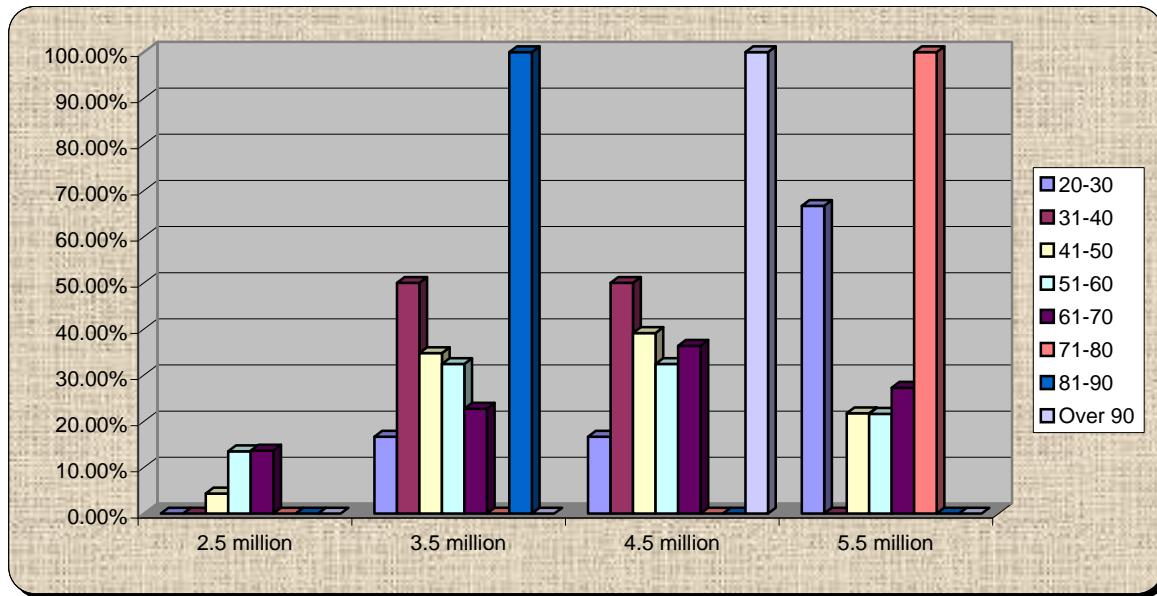
7.) How long does it take you to get to work?

	5-10 minutes	11-15 minutes	16-20 minutes	21-25 minutes	26-30 minutes	31-45 minutes	46-60 minutes	60-75 minutes	Above 75 minutes
20-30	50.00%	16.67%	0.00%	0.00%	16.67%	16.67%	0.00%	0.00%	0.00%
31-40	50.00%	10.00%	30.00%	0.00%	10.00%	0.00%	0.00%	0.00%	0.00%
41-50	33.33%	23.81%	9.52%	9.52%	9.52%	9.52%	4.76%	0.00%	0.00%
51-60	22.22%	27.78%	8.33%	16.67%	2.78%	16.67%	5.56%	0.00%	0.00%
61-70	35.00%	10.00%	20.00%	10.00%	5.00%	10.00%	5.00%	5.00%	0.00%
71-80	50.00%	50.00%	0.00%	0.00%	0.00%	0.00%	0.00%	0.00%	0.00%
81-90	100.00%	0.00%	0.00%	0.00%	0.00%	0.00%	0.00%	0.00%	0.00%
Over 90	0%	0%	0%	0%	0%	0%	0%	0%	0%



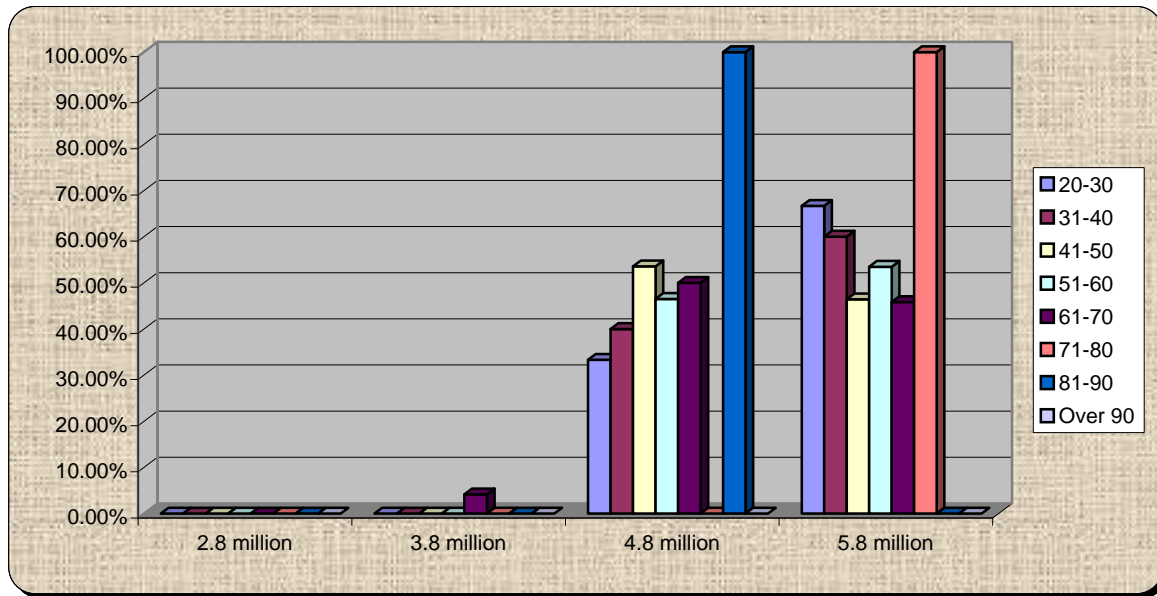
8.) What is the population of the 7 County Central Florida Region?

	2.5 million	3.5 million	4.5 million	5.5 million
20-30	0.00%	16.67%	16.67%	66.67%
31-40	0.00%	50.00%	50.00%	0.00%
41-50	4.35%	34.78%	39.13%	21.74%
51-60	13.51%	32.43%	32.43%	21.62%
61-70	13.64%	22.73%	36.36%	27.27%
71-80	0.00%	0.00%	0.00%	100.00%
81-90	0.00%	100.00%	0.00%	0.00%
Over 90	0.00%	0.00%	100.00%	0.00%



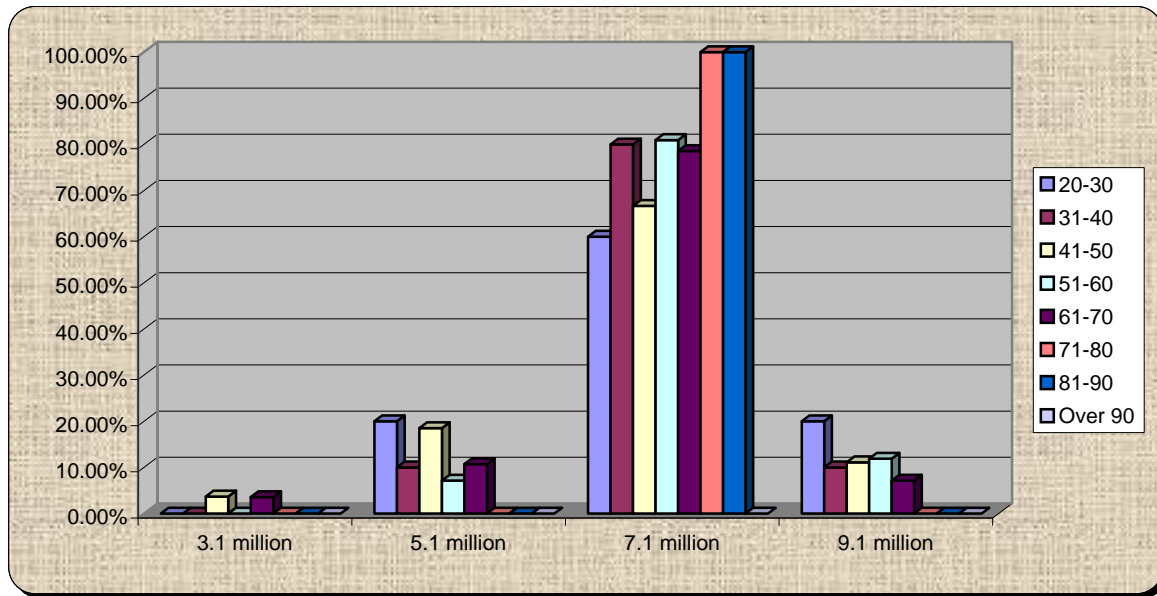
9.) What is the projected population of Central Florida in 2020?

	2.8 million	3.8 million	4.8 million	5.8 million
20-30	0.00%	0.00%	33.33%	66.67%
31-40	0.00%	0.00%	40.00%	60.00%
41-50	0.00%	0.00%	53.57%	46.43%
51-60	0.00%	0.00%	46.51%	53.49%
61-70	0.00%	4.17%	50.00%	45.83%
71-80	0.00%	0.00%	0.00%	100.00%
81-90	0.00%	0.00%	100.00%	0.00%
Over 90	0%	0%	0%	0%



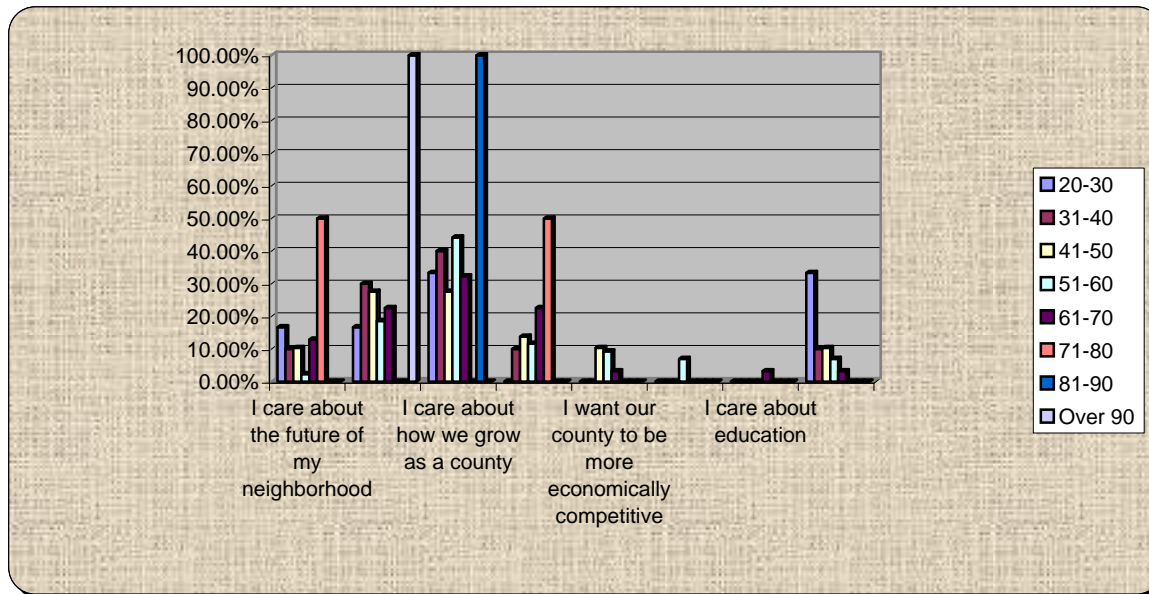
10.) What is the projected population of Central Florida in 2050?

	3.1 million	5.1 million	7.1 million	9.1 million
20-30	0.00%	20.00%	60.00%	20.00%
31-40	0.00%	10.00%	80.00%	10.00%
41-50	3.70%	18.52%	66.67%	11.11%
51-60	0.00%	7.14%	80.95%	11.90%
61-70	3.57%	10.71%	78.57%	7.14%
71-80	0.00%	0.00%	100.00%	0.00%
81-90	0.00%	0.00%	100.00%	0.00%
Over 90	0%	0%	0%	0%



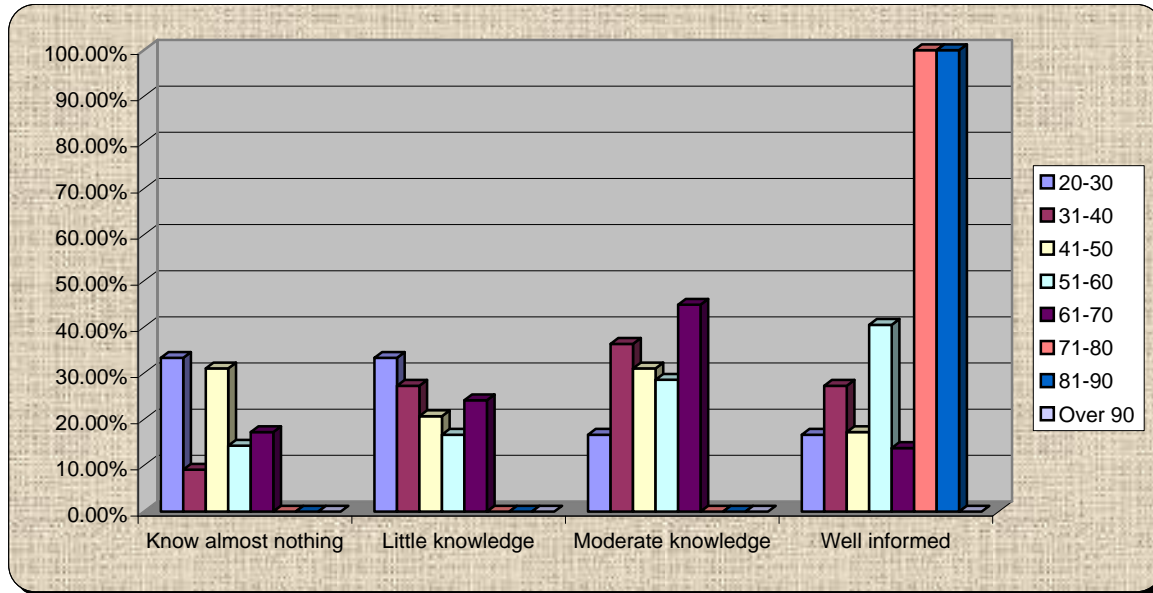
11.) Why are you here – Best Answer?

	I care about the future of my neighborhood	I care about protecting the environment	I care about how we grow as a county	I care about how we grow in relation to the region	I want our county to be more economically competitive	I want to network with leaders and members of my community	I care about education	Other
20-30	16.67%	16.67%	33.33%	0.00%	0.00%	0.00%	0.00%	33.33%
31-40	10.00%	30.00%	40.00%	10.00%	0.00%	0.00%	0.00%	10.00%
41-50	10.34%	27.59%	27.59%	13.79%	10.34%	0.00%	0.00%	10.34%
51-60	2.33%	18.60%	44.19%	11.63%	9.30%	6.98%	0.00%	6.98%
61-70	12.90%	22.58%	32.26%	22.58%	3.23%	0.00%	3.23%	3.23%
71-80	50.00%	0.00%	0.00%	50.00%	0.00%	0.00%	0.00%	0.00%
81-90	0.00%	0.00%	100.00%	0.00%	0.00%	0.00%	0.00%	0.00%
Over 90	0.00%	100.00%	0.00%	0.00%	0.00%	0.00%	0.00%	0.00%



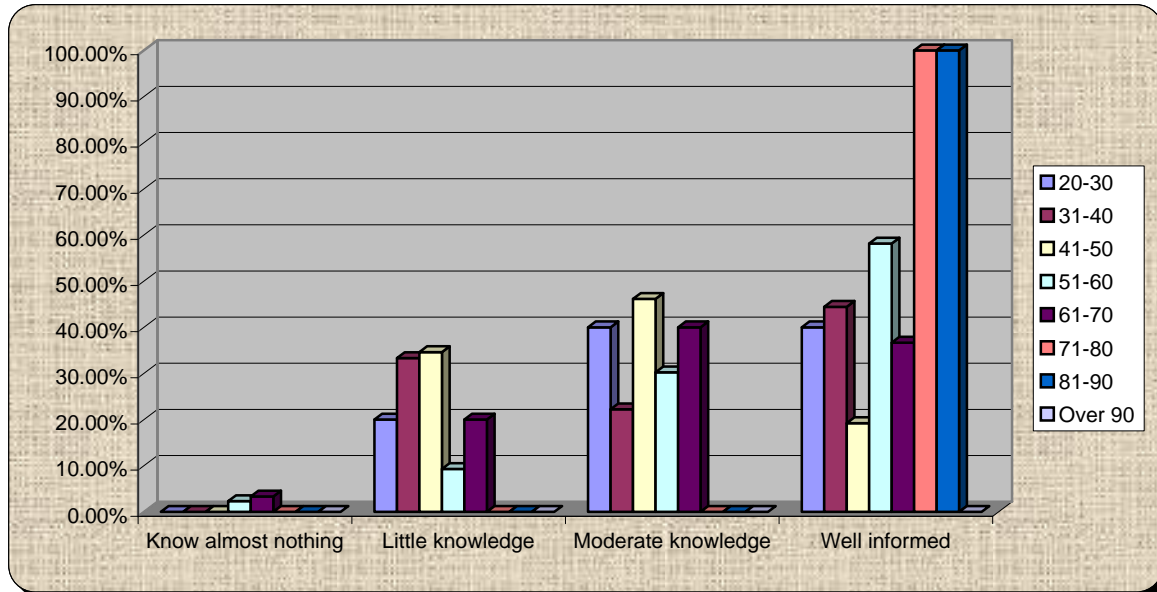
12.) How informed am I about myregion.org? Scale of 1 to 5, 5 well informed and 1 know almost nothing

	Know almost nothing	Little knowledge	Moderate knowledge	Well informed
20-30	33.33%	33.33%	16.67%	16.67%
31-40	9.09%	27.27%	36.36%	27.27%
41-50	31.03%	20.69%	31.03%	17.24%
51-60	14.29%	16.67%	28.57%	40.48%
61-70	17.24%	24.14%	44.83%	13.79%
71-80	0.00%	0.00%	0.00%	100.00%
81-90	0.00%	0.00%	0.00%	100.00%
Over 90	0%	0%	0%	0%



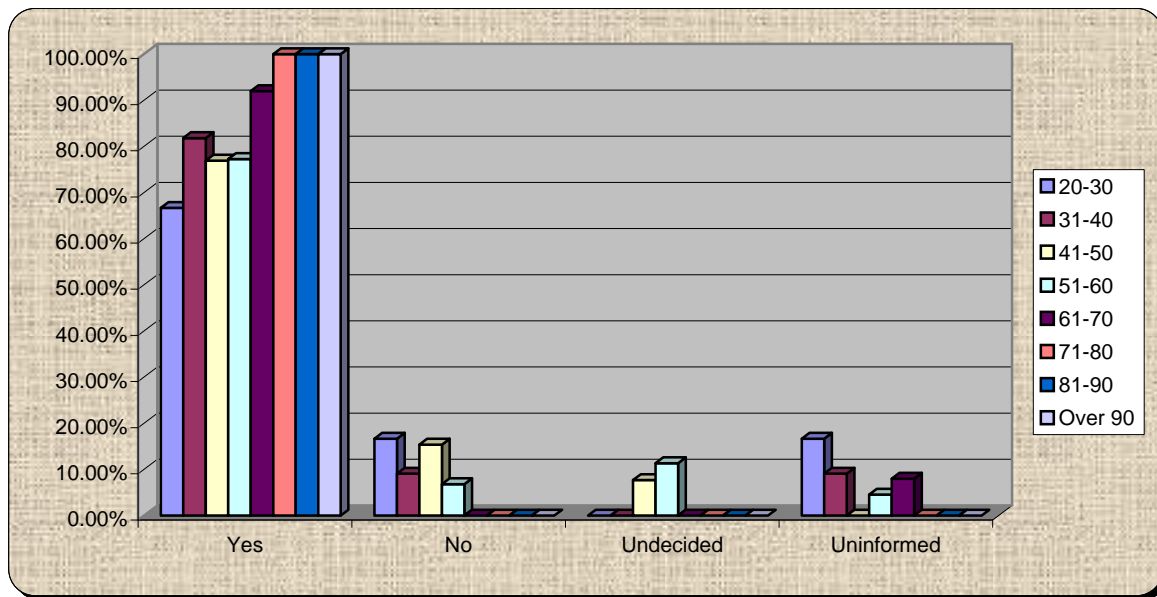
13.) How informed am I about growth planning and priorities in Volusia?

	Know almost nothing	Little knowledge	Moderate knowledge	Well informed
20-30	0.00%	20.00%	40.00%	40.00%
31-40	0.00%	33.33%	22.22%	44.44%
41-50	0.00%	34.62%	46.15%	19.23%
51-60	2.33%	9.30%	30.23%	58.14%
61-70	3.33%	20.00%	40.00%	36.67%
71-80	0.00%	0.00%	0.00%	100.00%
81-90	0.00%	0.00%	0.00%	100.00%
Over 90	0%	0%	0%	0%



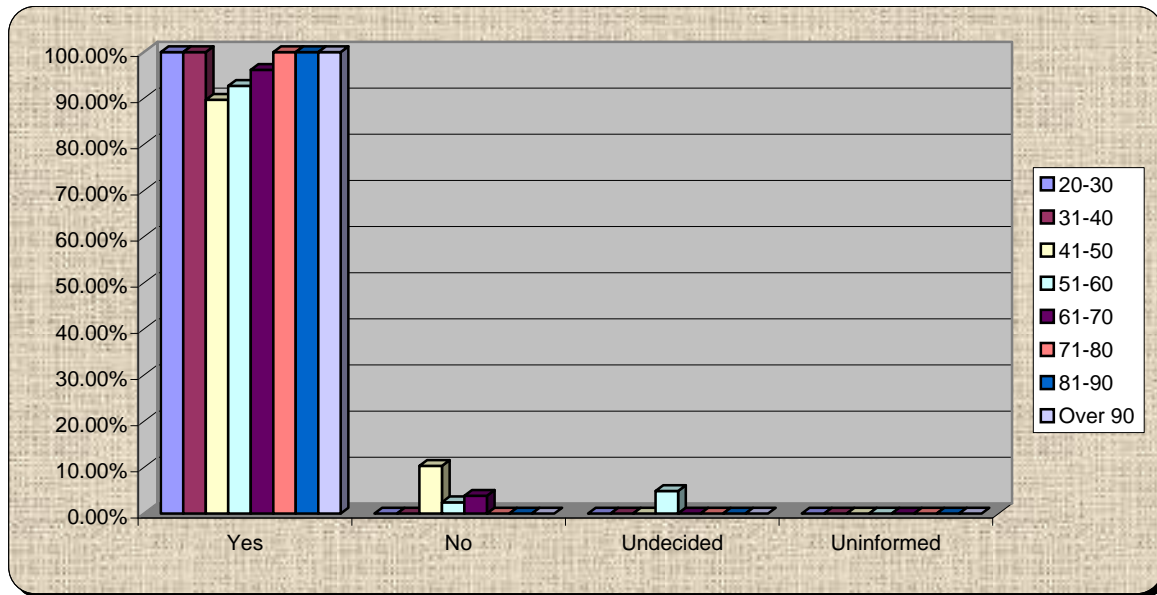
14.) Do you support minimum environmental standards countywide?

	Yes	No	Undecided	Uninformed
20-30	66.67%	16.67%	0.00%	16.67%
31-40	81.82%	9.09%	0.00%	9.09%
41-50	76.92%	15.38%	7.69%	0.00%
51-60	77.27%	6.82%	11.36%	4.55%
61-70	92.00%	0.00%	0.00%	8.00%
71-80	100.00%	0.00%	0.00%	0.00%
81-90	100.00%	0.00%	0.00%	0.00%
Over 90	100.00%	0.00%	0.00%	0.00%



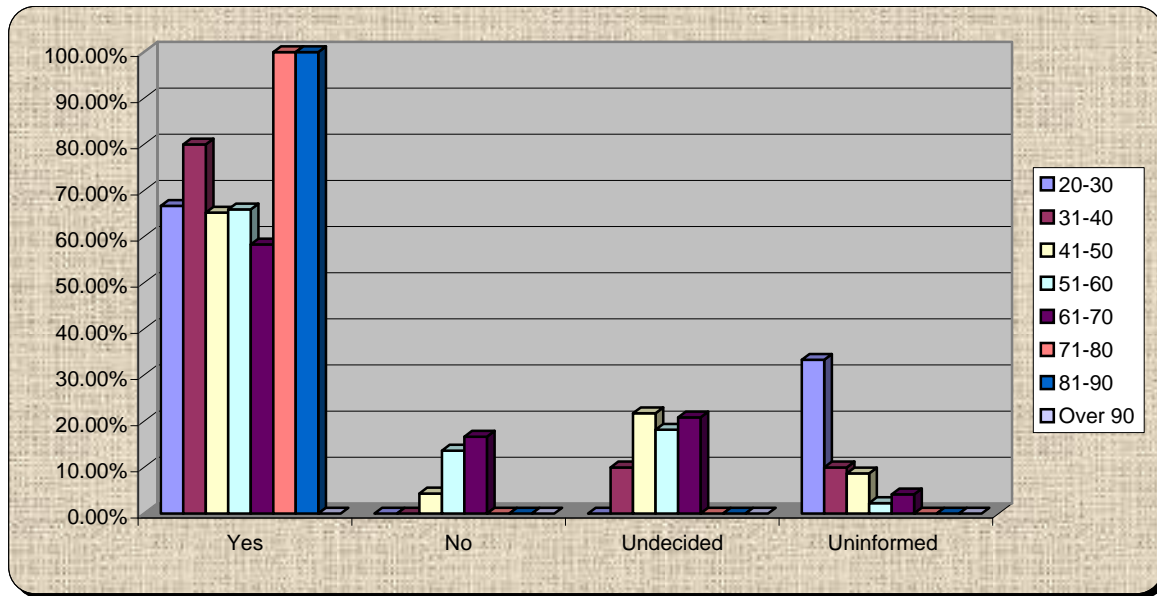
15.) Do you believe protecting natural areas will benefit your quality of life?

	Yes	No	Undecided	Uninformed
20-30	100.00%	0.00%	0.00%	0.00%
31-40	100.00%	0.00%	0.00%	0.00%
41-50	89.66%	10.34%	0.00%	0.00%
51-60	92.68%	2.44%	4.88%	0.00%
61-70	96.15%	3.85%	0.00%	0.00%
71-80	100.00%	0.00%	0.00%	0.00%
81-90	100.00%	0.00%	0.00%	0.00%
Over 90	100.00%	0.00%	0.00%	0.00%



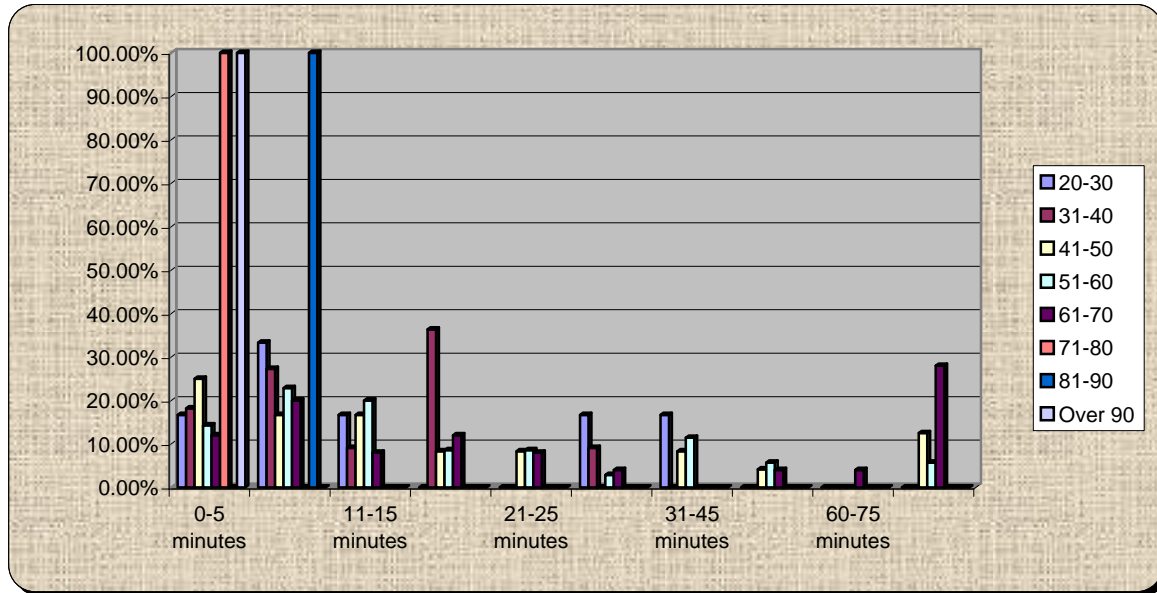
16.) Do you support smart growth tools such as transfer of development rights to protect rural and natural areas?

	Yes	No	Undecided	Uninformed
20-30	66.67%	0.00%	0.00%	33.33%
31-40	80.00%	0.00%	10.00%	10.00%
41-50	65.22%	4.35%	21.74%	8.70%
51-60	65.91%	13.64%	18.18%	2.27%
61-70	58.33%	16.67%	20.83%	4.17%
71-80	100.00%	0.00%	0.00%	0.00%
81-90	100.00%	0.00%	0.00%	0.00%
Over 90	0%	0%	0%	0%



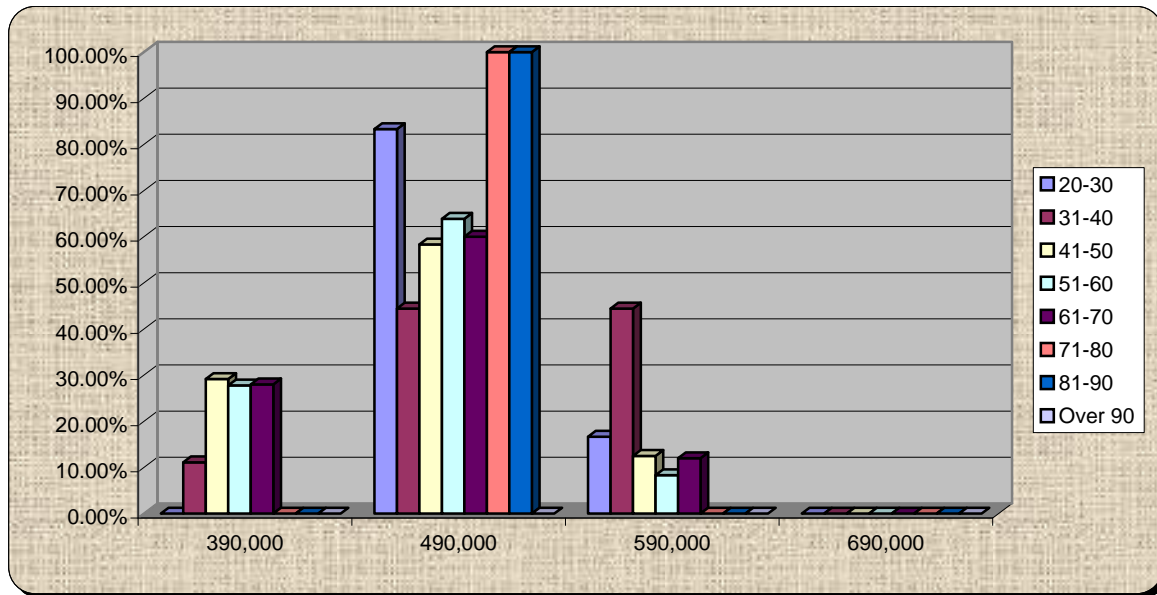
17.) Re-poll: How long does it take you to get to work?

	0-5 minutes	5-10 minutes	11-15 minutes	16-20 minutes	21-25 minutes	26-30 minutes	31-45 minutes	46-60 minutes	60-75 minutes	Do not Work
20-30	16.67%	33.33%	16.67%	0.00%	0.00%	16.67%	16.67%	0.00%	0.00%	0.00%
31-40	18.18%	27.27%	9.09%	36.36%	0.00%	9.09%	0.00%	0.00%	0.00%	0.00%
41-50	25.00%	16.67%	16.67%	8.33%	8.33%	0.00%	8.33%	4.17%	0.00%	12.50%
51-60	14.29%	22.86%	20.00%	8.57%	8.57%	2.86%	11.43%	5.71%	0.00%	5.71%
61-70	12.00%	20.00%	8.00%	12.00%	8.00%	4.00%	0.00%	4.00%	4.00%	28.00%
71-80	100.00%	0.00%	0.00%	0.00%	0.00%	0.00%	0.00%	0.00%	0.00%	0.00%
81-90	0.00%	100.00%	0.00%	0.00%	0.00%	0.00%	0.00%	0.00%	0.00%	0.00%
Over 90	100.00%	0.00%	0.00%	0.00%	0.00%	0.00%	0.00%	0.00%	0.00%	0.00%



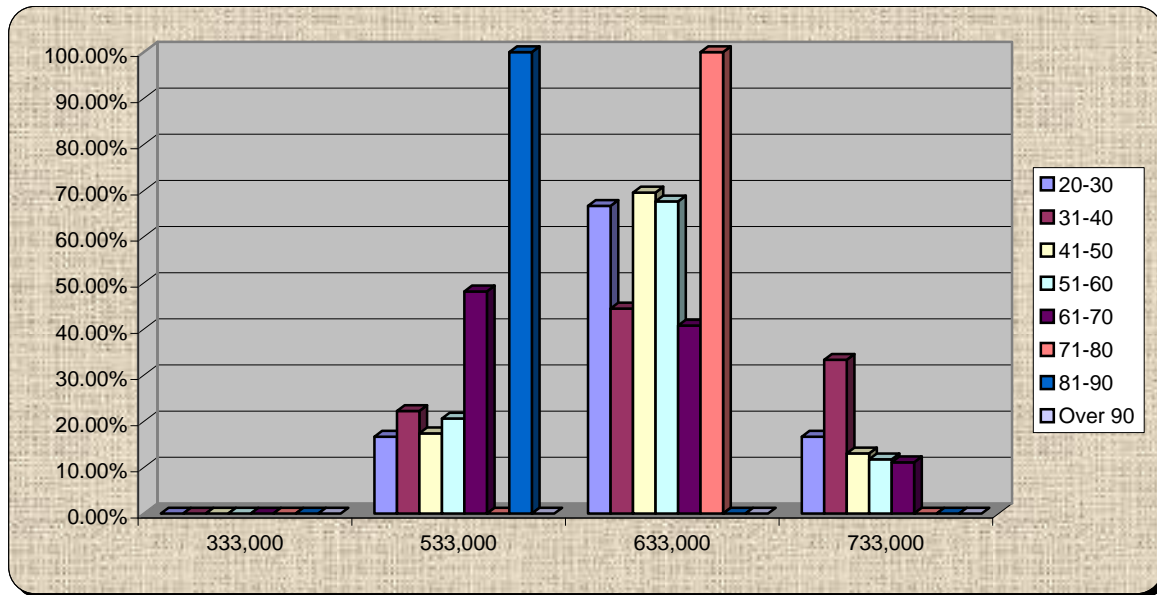
18.) What is the population of Volusia County?

	390,000	490,000	590,000	690,000
20-30	0.00%	83.33%	16.67%	0.00%
31-40	11.11%	44.44%	44.44%	0.00%
41-50	29.17%	58.33%	12.50%	0.00%
51-60	27.78%	63.89%	8.33%	0.00%
61-70	28.00%	60.00%	12.00%	0.00%
71-80	0.00%	100.00%	0.00%	0.00%
81-90	0.00%	100.00%	0.00%	0.00%
Over 90	0%	0%	0%	0%



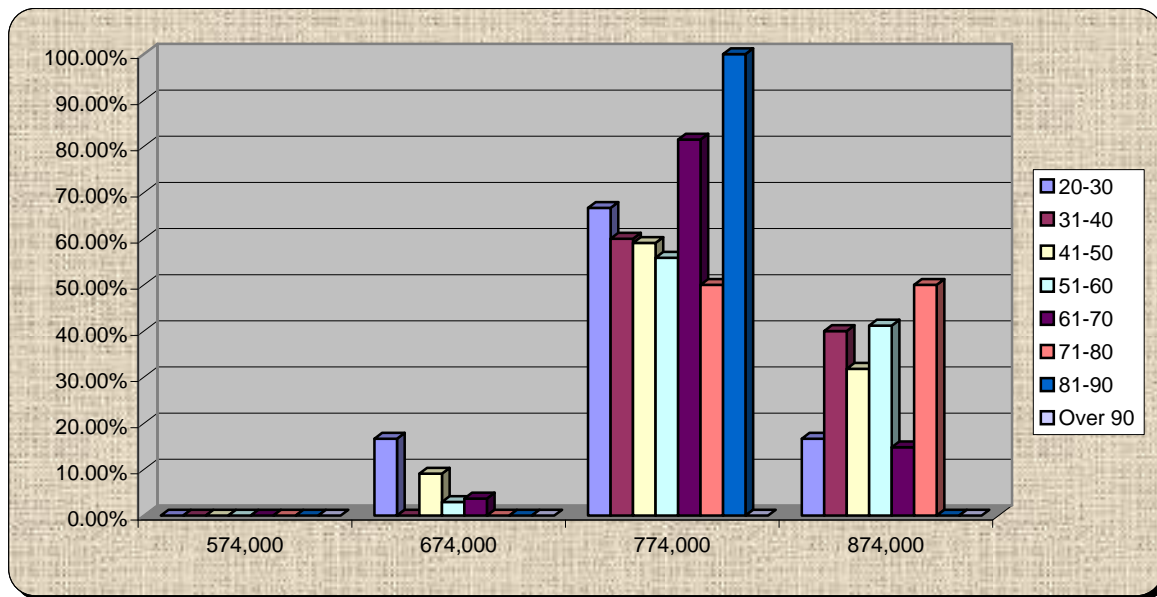
19.) What is the projected population of Volusia County in 2020?

	333,000	533,000	633,000	733,000
20-30	0.00%	16.67%	66.67%	16.67%
31-40	0.00%	22.22%	44.44%	33.33%
41-50	0.00%	17.39%	69.57%	13.04%
51-60	0.00%	20.59%	67.65%	11.76%
61-70	0.00%	48.15%	40.74%	11.11%
71-80	0.00%	0.00%	100.00%	0.00%
81-90	0.00%	100.00%	0.00%	0.00%
Over 90	0%	0%	0%	0%



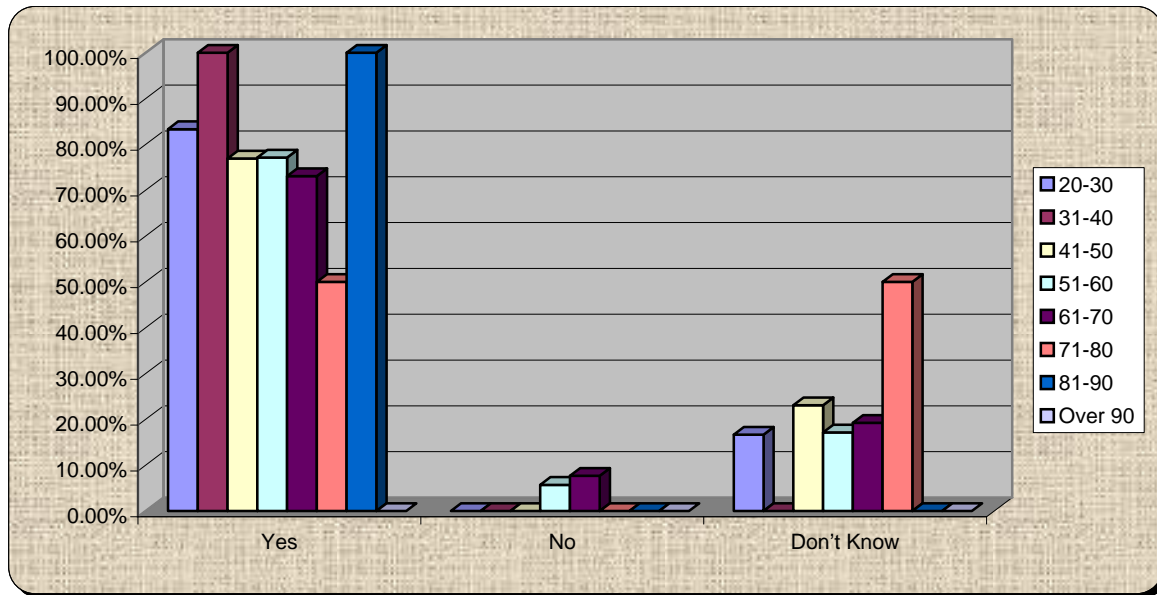
20.) What is the projected population of Volusia County in 2050?

	574,000	674,000	774,000	874,000
20-30	0.00%	16.67%	66.67%	16.67%
31-40	0.00%	0.00%	60.00%	40.00%
41-50	0.00%	9.09%	59.09%	31.82%
51-60	0.00%	2.94%	55.88%	41.18%
61-70	0.00%	3.70%	81.48%	14.81%
71-80	0.00%	0.00%	50.00%	50.00%
81-90	0.00%	0.00%	100.00%	0.00%
Over 90	0%	0%	0%	0%



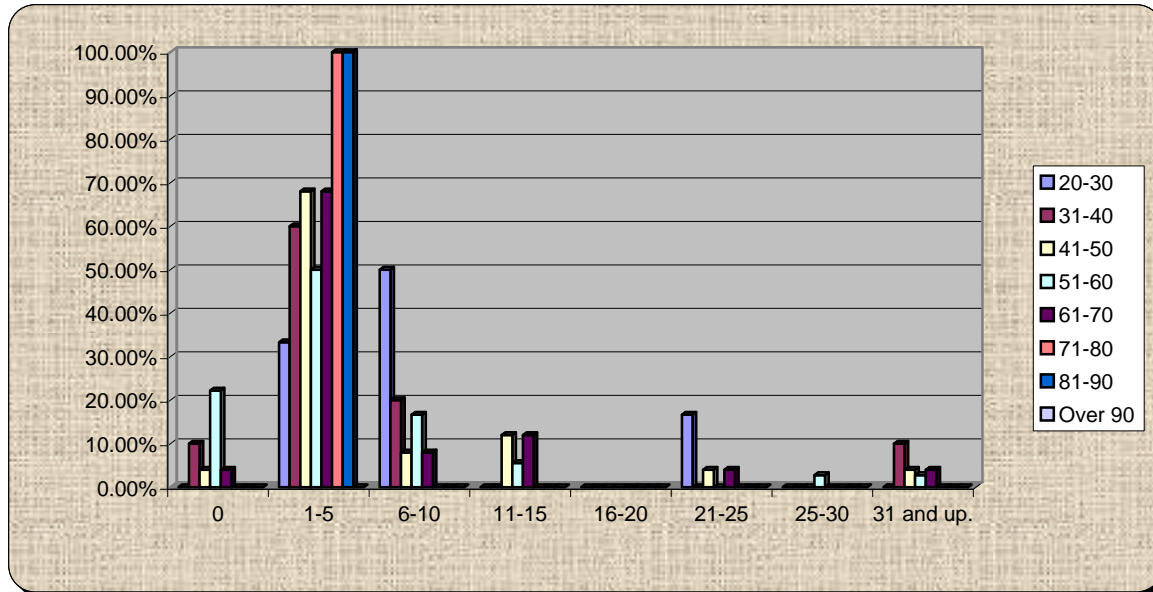
21.) Do you believe sustainable communities will support a strong local economy?

	Yes	No	Don't Know
20-30	83.33%	0.00%	16.67%
31-40	100.00%	0.00%	0.00%
41-50	76.92%	0.00%	23.08%
51-60	77.14%	5.71%	17.14%
61-70	73.08%	7.69%	19.23%
71-80	50.00%	0.00%	50.00%
81-90	100.00%	0.00%	0.00%
Over 90	0%	0%	0%



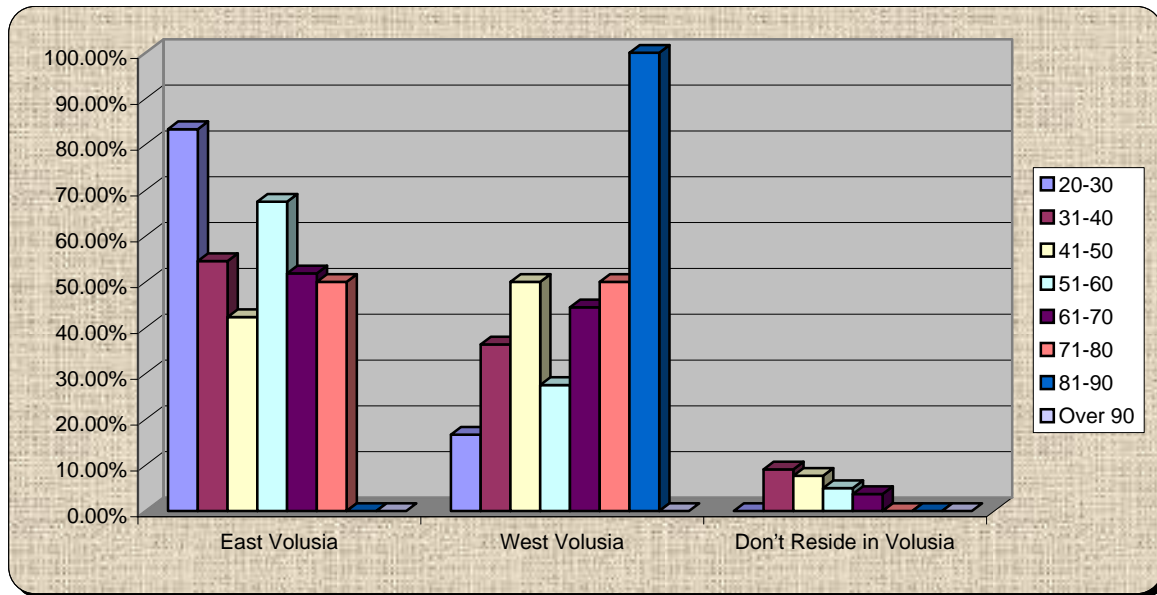
22.) How many days per month do you leave the borders of Volusia for commercial, educational, entertainment, healthcare or other activities?

	0	1-5	6-10	11-15	16-20	21-25	25-30	31 and up.
20-30	0.00%	33.33%	50.00%	0.00%	0.00%	16.67%	0.00%	0.00%
31-40	10.00%	60.00%	20.00%	0.00%	0.00%	0.00%	0.00%	10.00%
41-50	4.00%	68.00%	8.00%	12.00%	0.00%	4.00%	0.00%	4.00%
51-60	22.22%	50.00%	16.67%	5.56%	0.00%	0.00%	2.78%	2.78%
61-70	4.00%	68.00%	8.00%	12.00%	0.00%	4.00%	0.00%	4.00%
71-80	0.00%	100.00%	0.00%	0.00%	0.00%	0.00%	0.00%	0.00%
81-90	0.00%	100.00%	0.00%	0.00%	0.00%	0.00%	0.00%	0.00%
Over 90	0%	0%	0%	0%	0%	0%	0%	0%



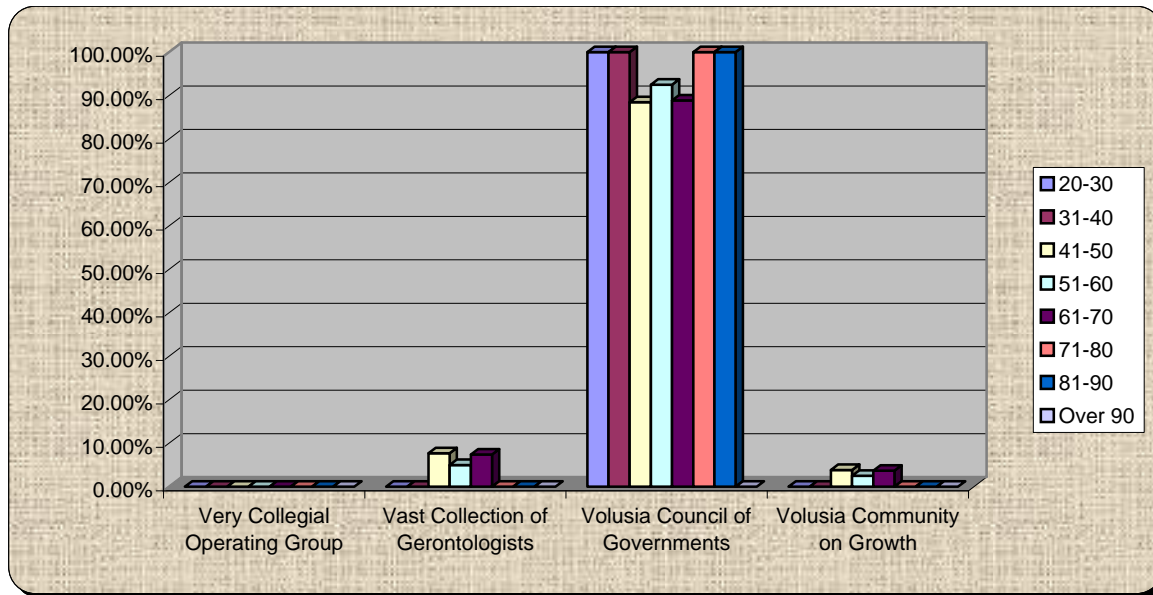
23.) Where do you reside?

	East Volusia	West Volusia	Volusia
20-30	83.33%	16.67%	0.00%
31-40	54.55%	36.36%	9.09%
41-50	42.31%	50.00%	7.69%
51-60	67.50%	27.50%	5.00%
61-70	51.85%	44.44%	3.70%
71-80	50.00%	50.00%	0.00%
81-90	0.00%	100.00%	0.00%
Over 90	0%	0%	0%



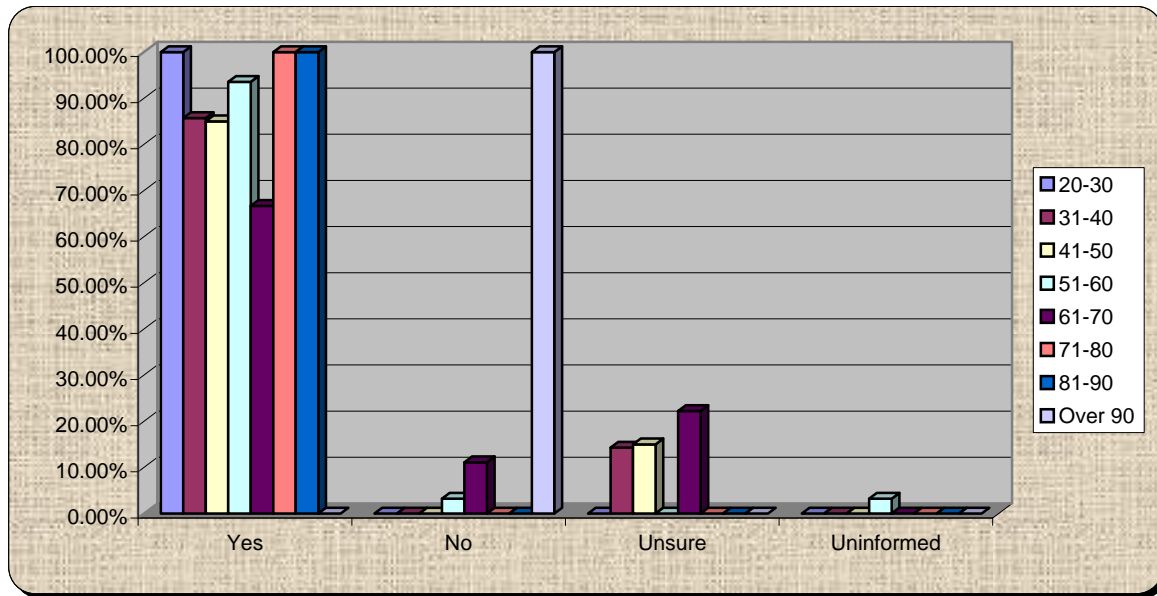
24.) What is VCOG:

	Very Collegial Operating Group	Vast Collection of Gerontologists	Volusia Council of Governments	Volusia Community on Growth
20-30	0.00%	0.00%	100.00%	0.00%
31-40	0.00%	0.00%	100.00%	0.00%
41-50	0.00%	7.69%	88.46%	3.85%
51-60	0.00%	5.00%	92.50%	2.50%
61-70	0.00%	7.41%	88.89%	3.70%
71-80	0.00%	0.00%	100.00%	0.00%
81-90	0.00%	0.00%	100.00%	0.00%
Over 90	0%	0%	0%	0%



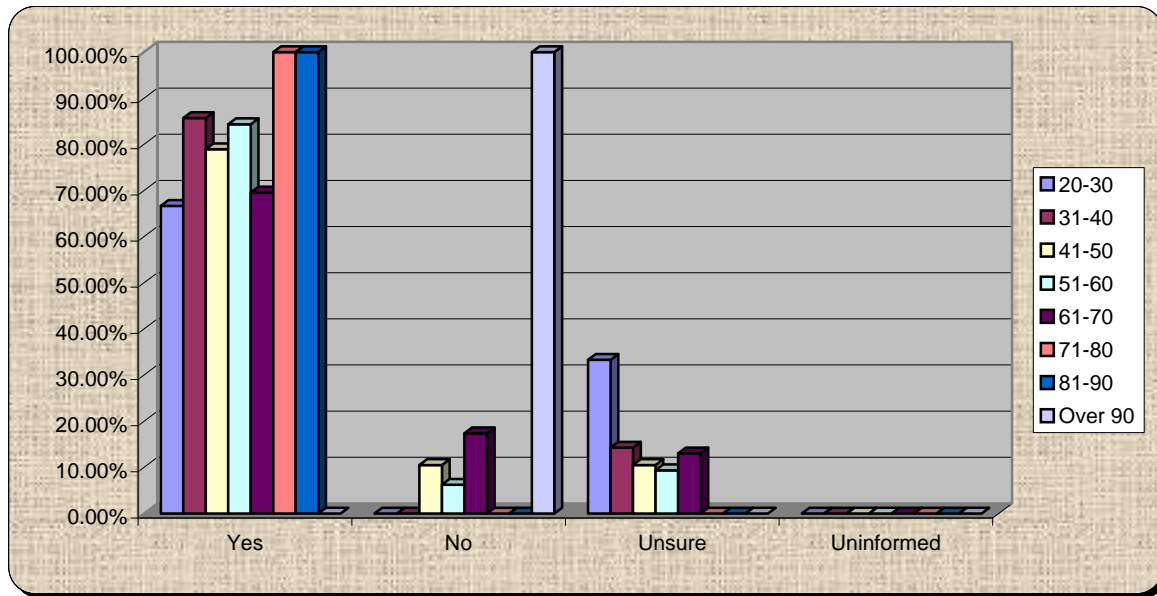
25.) Accelerating deployment of the right transportation technology will make a difference in achieving a sustainable future

	Yes	No	Unsure	Uninformed
20-30	100.00%	0.00%	0.00%	0.00%
31-40	85.71%	0.00%	14.29%	0.00%
41-50	85.00%	0.00%	15.00%	0.00%
51-60	93.55%	3.23%	0.00%	3.23%
61-70	66.67%	11.11%	22.22%	0.00%
71-80	100.00%	0.00%	0.00%	0.00%
81-90	100.00%	0.00%	0.00%	0.00%
Over 90	0.00%	100.00%	0.00%	0.00%



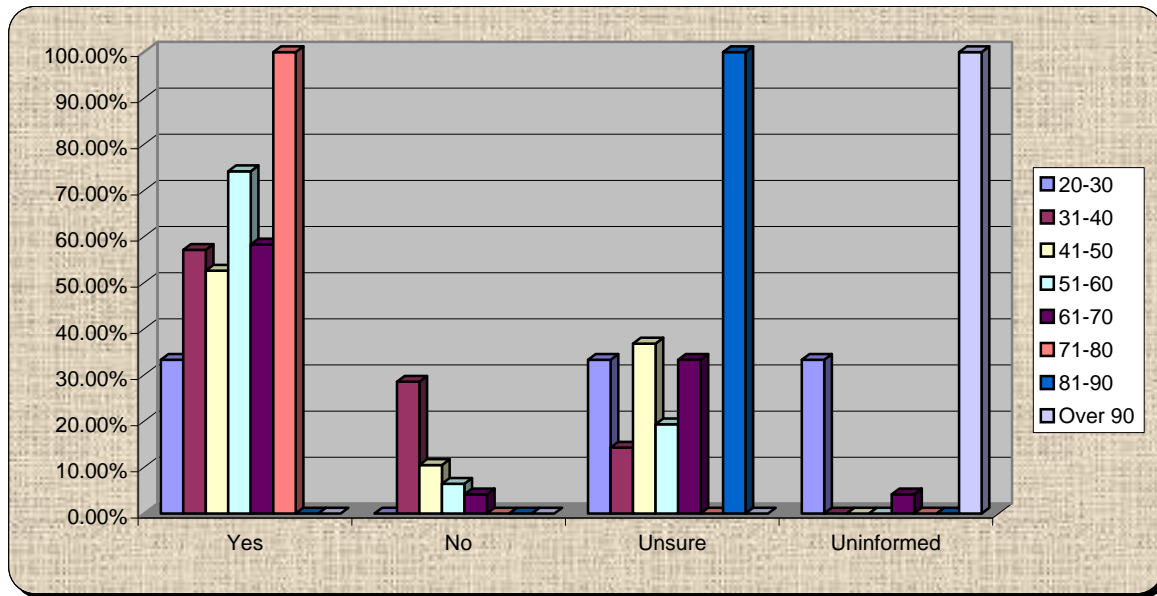
26.) Commuter rail is a vital component of our sustainable community

	Yes	No	Unsure	Uninformed
20-30	66.67%	0.00%	33.33%	0.00%
31-40	85.71%	0.00%	14.29%	0.00%
41-50	78.95%	10.53%	10.53%	0.00%
51-60	84.38%	6.25%	9.38%	0.00%
61-70	69.57%	17.39%	13.04%	0.00%
71-80	100.00%	0.00%	0.00%	0.00%
81-90	100.00%	0.00%	0.00%	0.00%
Over 90	0.00%	100.00%	0.00%	0.00%



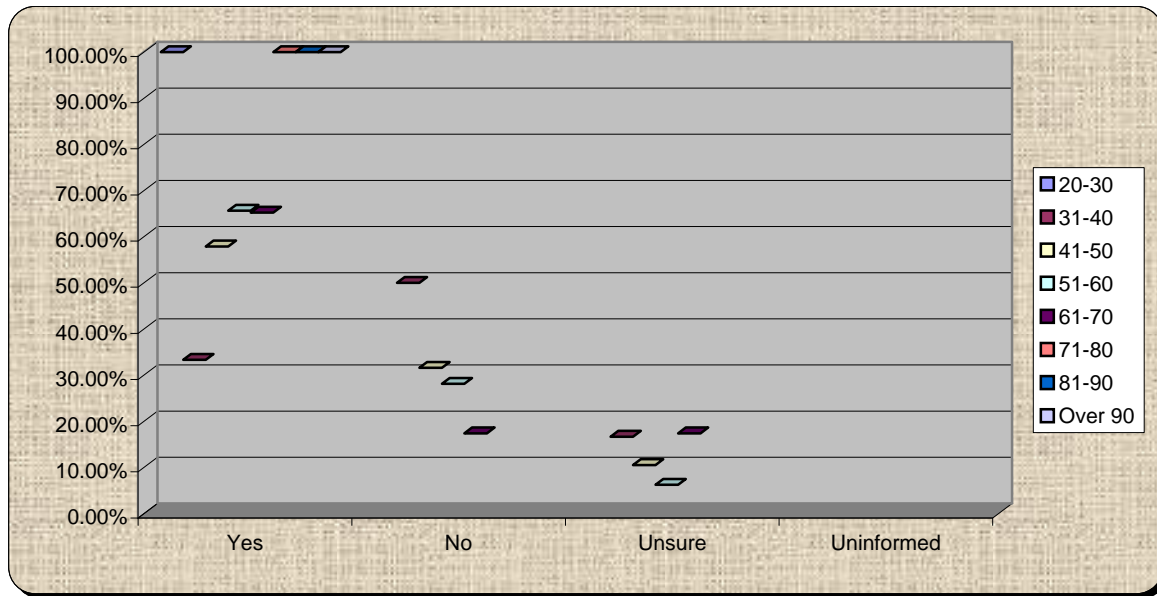
27.) I understand how A & B operate and what scenarios they represent

	Yes	No	Unsure	Uninformed
20-30	33.33%	0.00%	33.33%	33.33%
31-40	57.14%	28.57%	14.29%	0.00%
41-50	52.63%	10.53%	36.84%	0.00%
51-60	74.19%	6.45%	19.35%	0.00%
61-70	58.33%	4.17%	33.33%	4.17%
71-80	100.00%	0.00%	0.00%	0.00%
81-90	0.00%	0.00%	100.00%	0.00%
Over 90	0.00%	0.00%	0.00%	100.00%



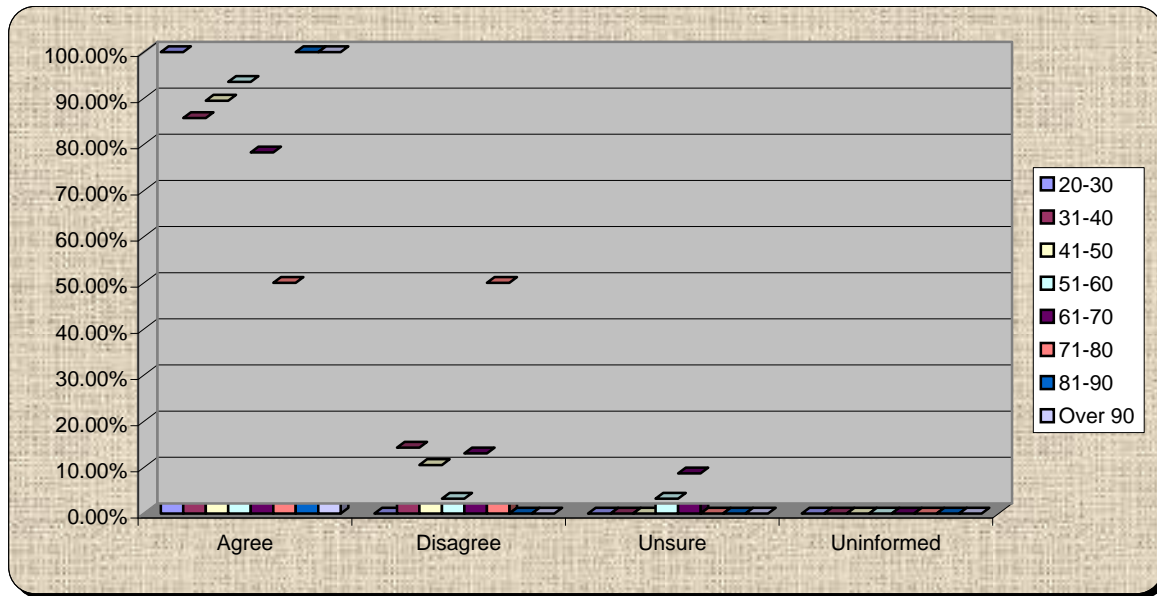
28.) Communicating the complexity of systems and infrastructure is our most serious barrier to success

	Yes	No	Unsure	Uninformed
20-30	100.00%	0.00%	0.00%	0.00%
31-40	33.33%	50.00%	16.67%	0.00%
41-50	57.89%	31.58%	10.53%	0.00%
51-60	65.63%	28.13%	6.25%	0.00%
61-70	65.22%	17.39%	17.39%	0.00%
71-80	100.00%	0.00%	0.00%	0.00%
81-90	100.00%	0.00%	0.00%	0.00%
Over 90	100.00%	0.00%	0.00%	0.00%



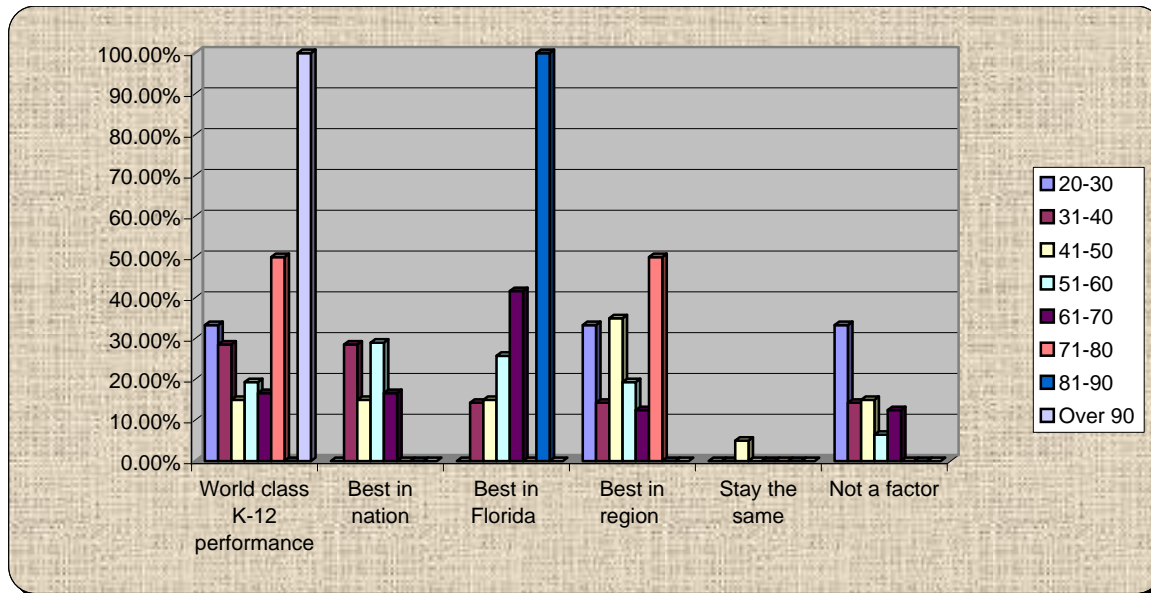
29.) We can't achieve our vision without culture change

	Agree	Disagree	Unsure	Uninformed
20-30	100.00%	0.00%	0.00%	0.00%
31-40	85.71%	14.29%	0.00%	0.00%
41-50	89.47%	10.53%	0.00%	0.00%
51-60	93.55%	3.23%	3.23%	0.00%
61-70	78.26%	13.04%	8.70%	0.00%
71-80	50.00%	50.00%	0.00%	0.00%
81-90	100.00%	0.00%	0.00%	0.00%
Over 90	100.00%	0.00%	0.00%	0.00%



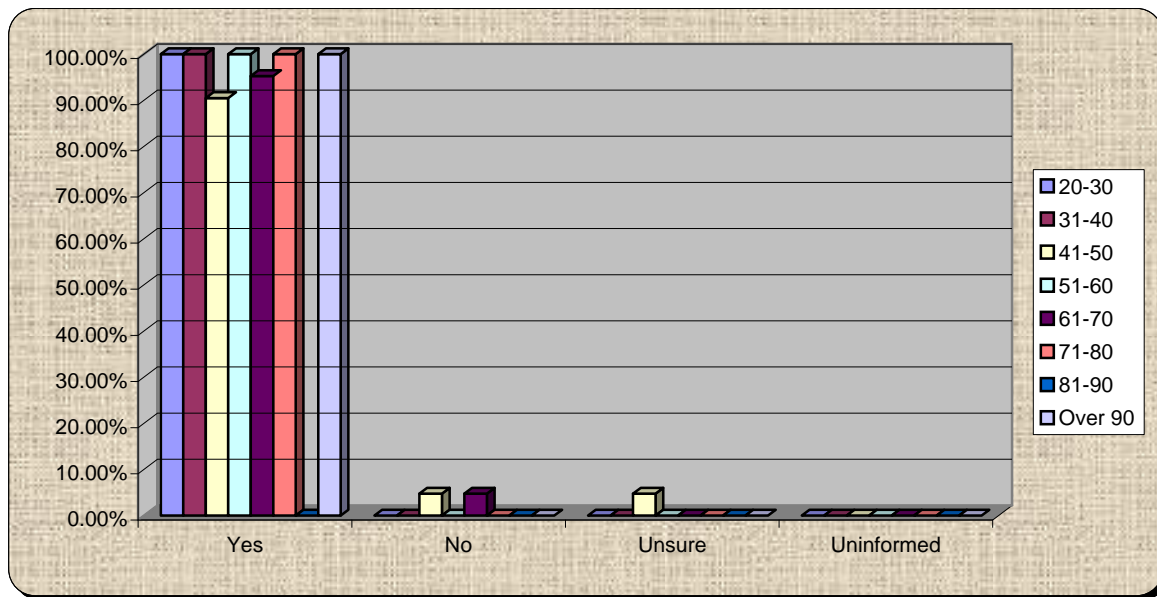
30.) Achieving our vision requires:

	World class K-12 performance	Best in nation	Best in Florida	Best in region	Stay the same	Not a factor
20-30	33.33%	0.00%	0.00%	33.33%	0.00%	33.33%
31-40	28.57%	28.57%	14.29%	14.29%	0.00%	14.29%
41-50	15.00%	15.00%	15.00%	35.00%	5.00%	15.00%
51-60	19.35%	29.03%	25.81%	19.35%	0.00%	6.45%
61-70	16.67%	16.67%	41.67%	12.50%	0.00%	12.50%
71-80	50.00%	0.00%	0.00%	50.00%	0.00%	0.00%
81-90	0.00%	0.00%	100.00%	0.00%	0.00%	0.00%
Over 90	100.00%	0.00%	0.00%	0.00%	0.00%	0.00%



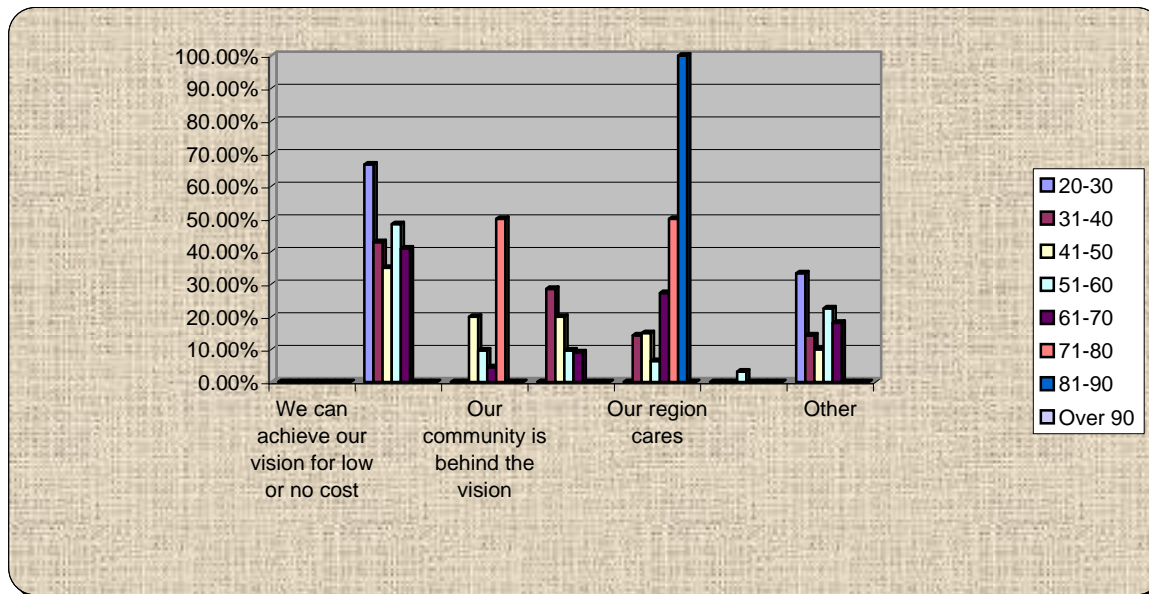
31.) I want to keep up with this effort

	Yes	No	Unsure	Uninformed
20-30	100.00%	0.00%	0.00%	0.00%
31-40	100.00%	0.00%	0.00%	0.00%
41-50	90.48%	4.76%	4.76%	0.00%
51-60	100.00%	0.00%	0.00%	0.00%
61-70	95.24%	4.76%	0.00%	0.00%
71-80	100.00%	0.00%	0.00%	0.00%
81-90	0%	0%	0%	0%
Over 90	100.00%	0.00%	0.00%	0.00%



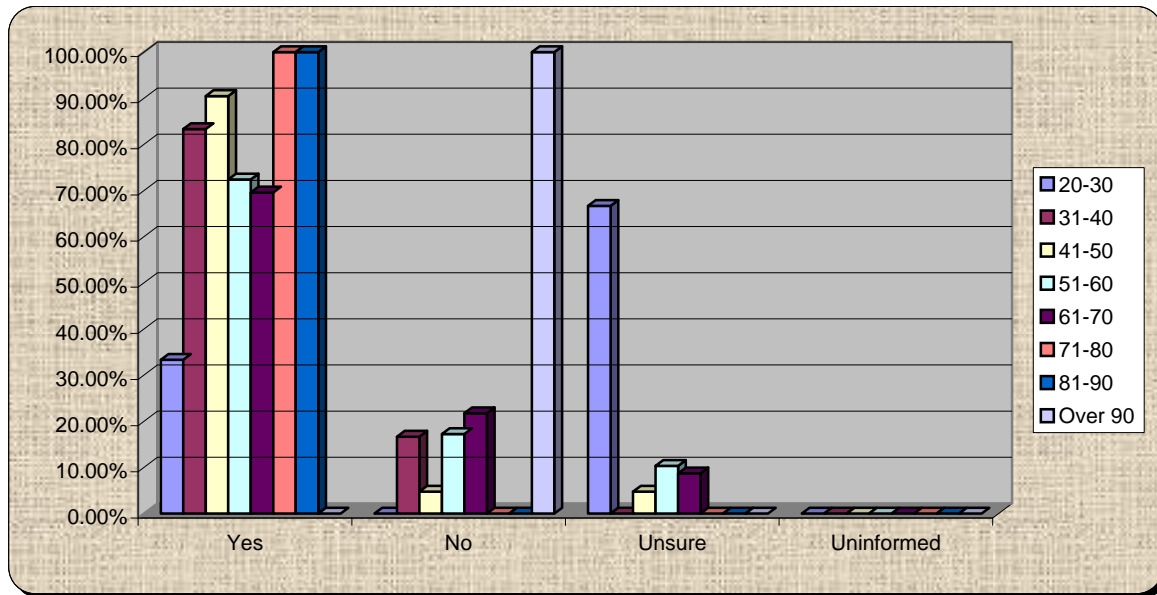
32.) What is the most important and credible message for your neighbor?

	We can achieve our vision for low or no cost	Our community governments can and are working together	Our community is behind the vision	Other communities have or are doing this with success	Our region cares	State policy and regulations are supportive	Other
20-30	0.00%	66.67%	0.00%	0.00%	0.00%	0.00%	33.33%
31-40	0.00%	42.86%	0.00%	28.57%	14.29%	0.00%	14.29%
41-50	0.00%	35.00%	20.00%	20.00%	15.00%	0.00%	10.00%
51-60	0.00%	48.39%	9.68%	9.68%	6.45%	3.23%	22.58%
61-70	0.00%	40.91%	4.55%	9.09%	27.27%	0.00%	18.18%
71-80	0.00%	0.00%	50.00%	0.00%	50.00%	0.00%	0.00%
81-90	0.00%	0.00%	0.00%	0.00%	100.00%	0.00%	0.00%
Over 90	0%	0%	0%	0%	0%	0%	0%



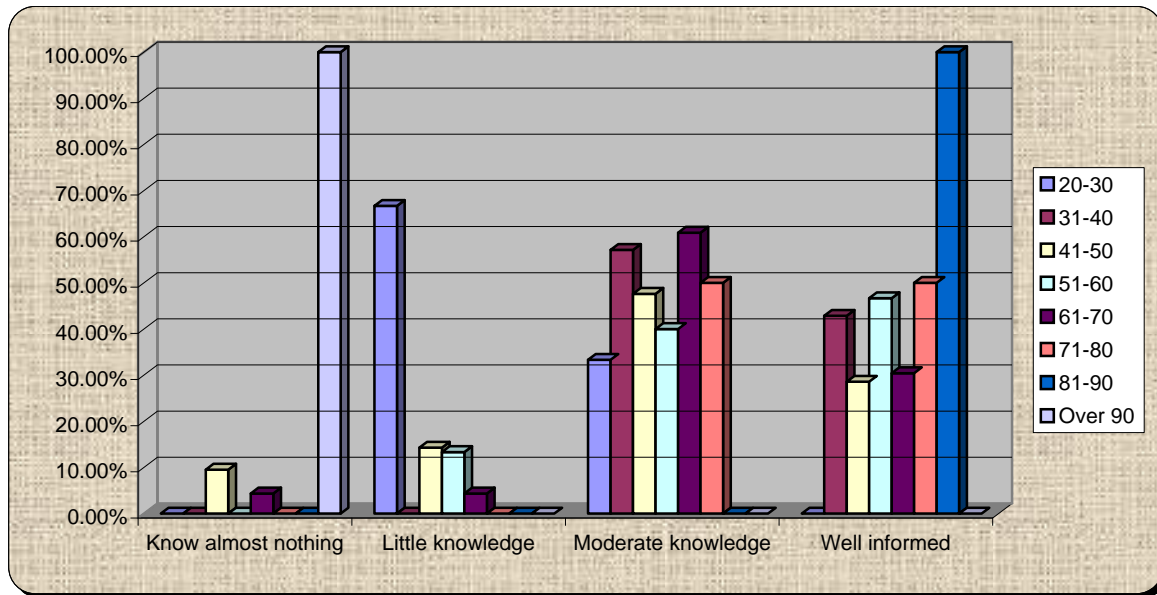
33.) Would you pay the extra money to bypass congestion?

	Yes	No	Unsure	Uninformed
20-30	33.33%	0.00%	66.67%	0.00%
31-40	83.33%	16.67%	0.00%	0.00%
41-50	90.48%	4.76%	4.76%	0.00%
51-60	72.41%	17.24%	10.34%	0.00%
61-70	69.57%	21.74%	8.70%	0.00%
71-80	100.00%	0.00%	0.00%	0.00%
81-90	100.00%	0.00%	0.00%	0.00%
Over 90	0.00%	100.00%	0.00%	0.00%



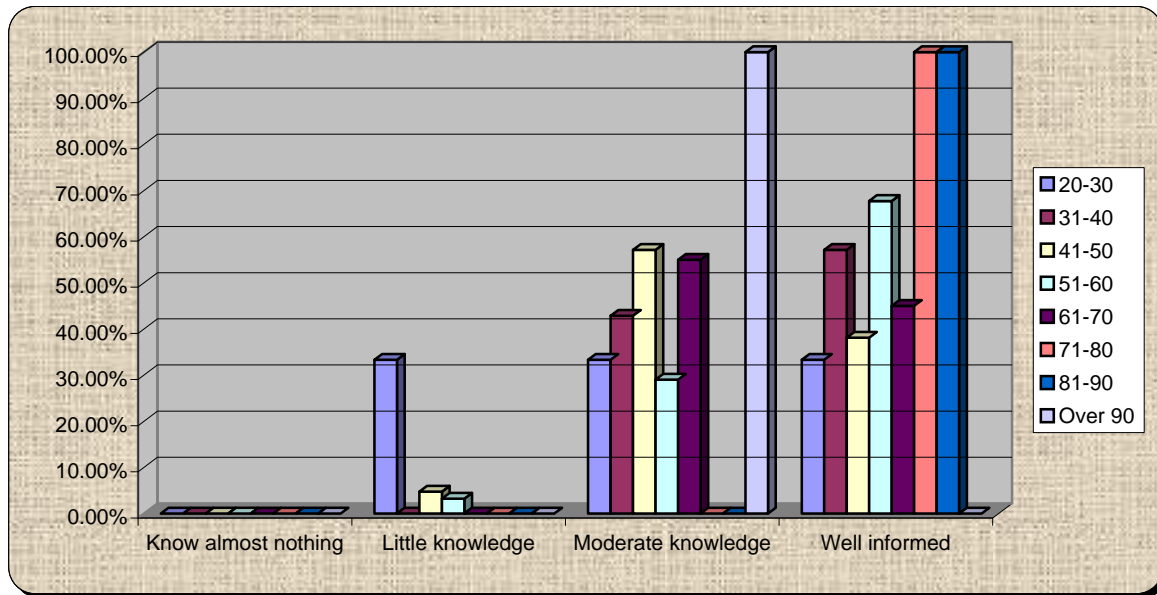
34.) How informed am I about myregion.org? Scale of 1 to 4, 4 well informed and 1 know almost nothing

	nothing	Little knowledge	knowledge	Well informed
20-30	0.00%	66.67%	33.33%	0.00%
31-40	0.00%	0.00%	57.14%	42.86%
41-50	9.52%	14.29%	47.62%	28.57%
51-60	0.00%	13.33%	40.00%	46.67%
61-70	4.35%	4.35%	60.87%	30.43%
71-80	0.00%	0.00%	50.00%	50.00%
81-90	0.00%	0.00%	0.00%	100.00%
Over 90	100.00%	0.00%	0.00%	0.00%



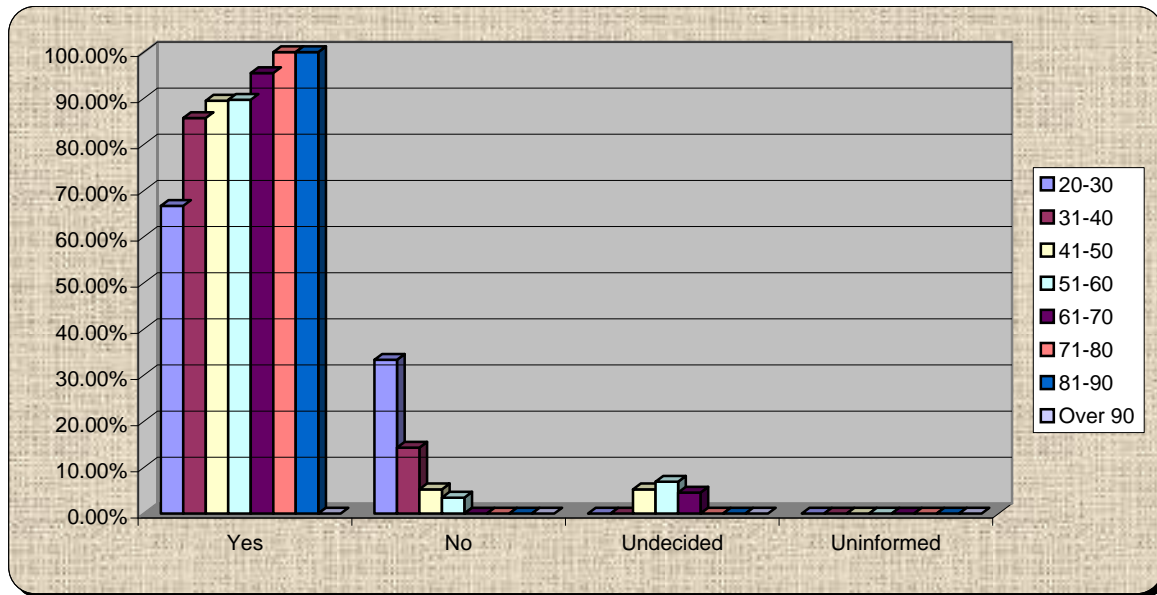
35.) How informed am I about growth planning and priorities in Volusia?

	nothing	Little knowledge	knowledge	Well informed
20-30	0.00%	33.33%	33.33%	33.33%
31-40	0.00%	0.00%	42.86%	57.14%
41-50	0.00%	4.76%	57.14%	38.10%
51-60	0.00%	3.23%	29.03%	67.74%
61-70	0.00%	0.00%	55.00%	45.00%
71-80	0.00%	0.00%	0.00%	100.00%
81-90	0.00%	0.00%	0.00%	100.00%
Over 90	0.00%	0.00%	100.00%	0.00%



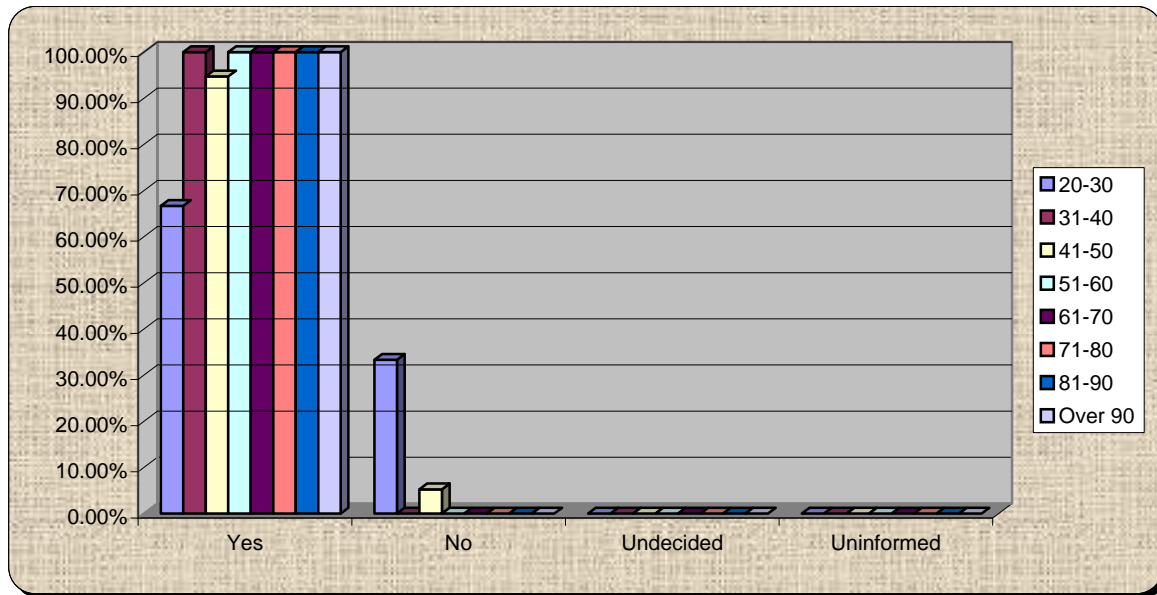
36.) Do you support minimum environmental standards countywide?

	Yes	No	Undecided	Uninformed
20-30	66.67%	33.33%	0.00%	0.00%
31-40	85.71%	14.29%	0.00%	0.00%
41-50	89.47%	5.26%	5.26%	0.00%
51-60	89.66%	3.45%	6.90%	0.00%
61-70	95.45%	0.00%	4.55%	0.00%
71-80	100.00%	0.00%	0.00%	0.00%
81-90	100.00%	0.00%	0.00%	0.00%
Over 90	0%	0%	0%	0%



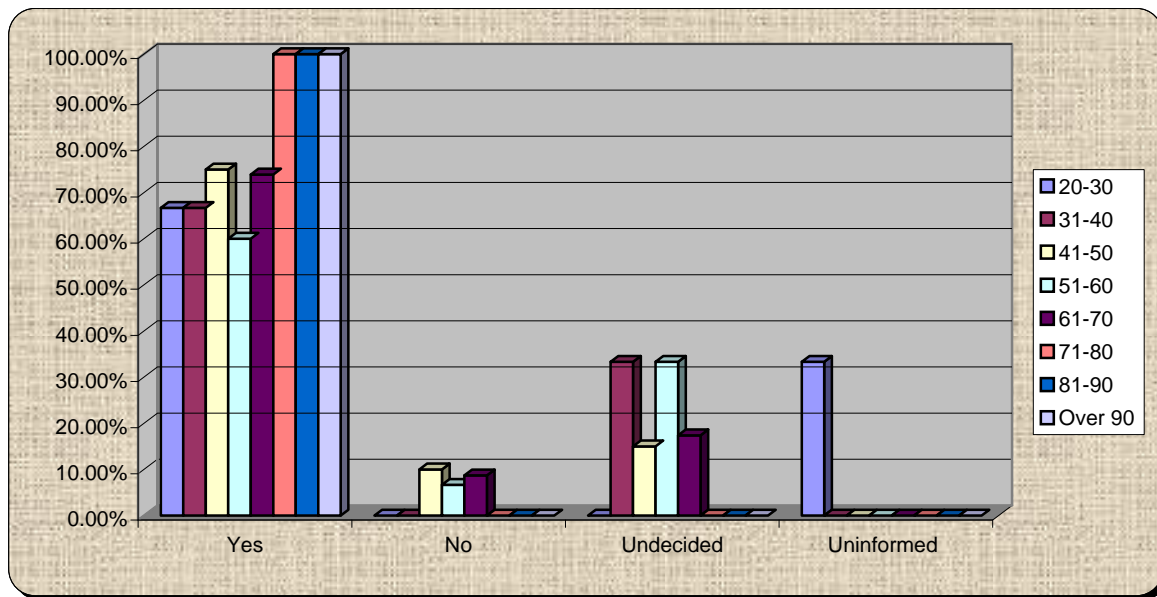
37.) Do you believe protecting natural areas will benefit your quality of life?

	Yes	No	Undecided	Uninformed
20-30	66.67%	33.33%	0.00%	0.00%
31-40	100.00%	0.00%	0.00%	0.00%
41-50	94.74%	5.26%	0.00%	0.00%
51-60	100.00%	0.00%	0.00%	0.00%
61-70	100.00%	0.00%	0.00%	0.00%
71-80	100.00%	0.00%	0.00%	0.00%
81-90	100.00%	0.00%	0.00%	0.00%
Over 90	100.00%	0.00%	0.00%	0.00%



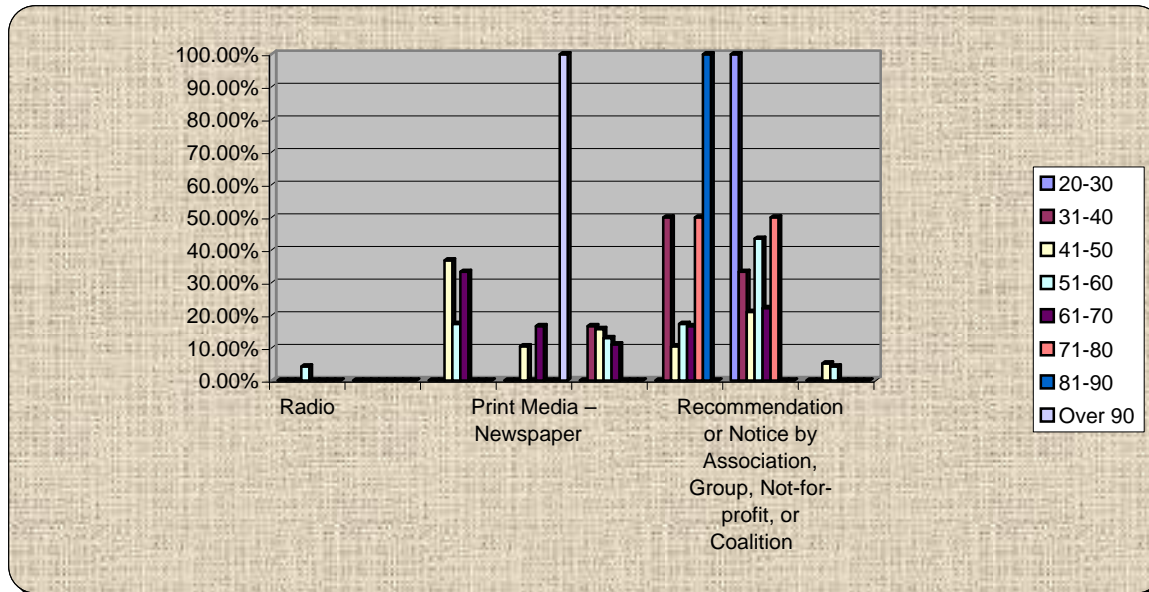
38.) Do you support smart growth tools such as transfer of development rights to protect rural and natural areas?

	Yes	No	Undecided	Uninformed
20-30	66.67%	0.00%	0.00%	33.33%
31-40	66.67%	0.00%	33.33%	0.00%
41-50	75.00%	10.00%	15.00%	0.00%
51-60	60.00%	6.67%	33.33%	0.00%
61-70	73.91%	8.70%	17.39%	0.00%
71-80	100.00%	0.00%	0.00%	0.00%
81-90	100.00%	0.00%	0.00%	0.00%
Over 90	100.00%	0.00%	0.00%	0.00%



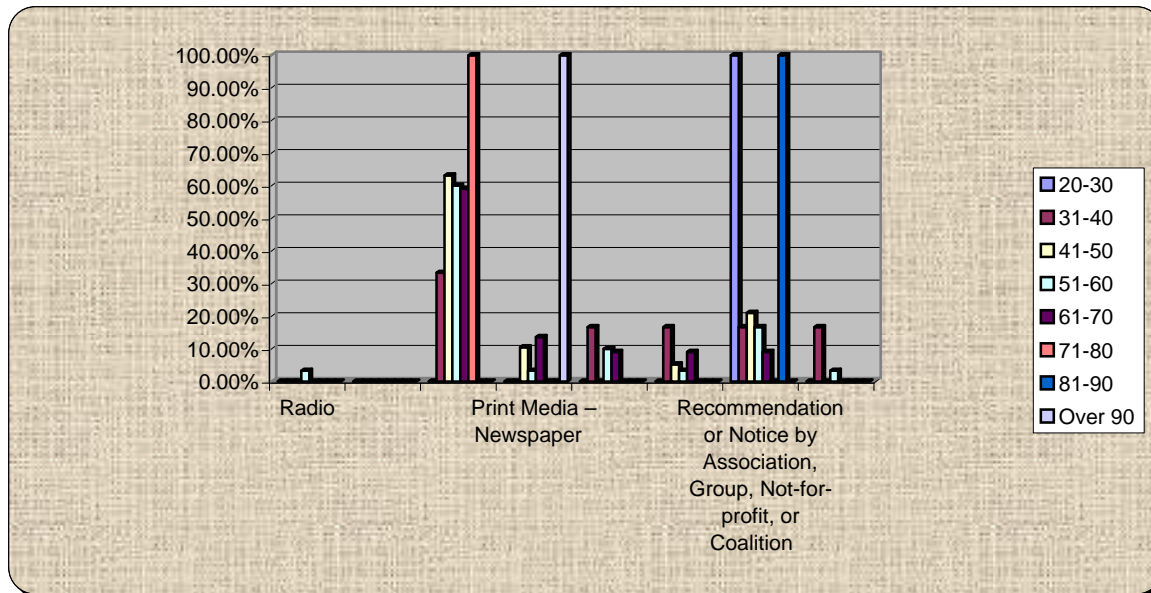
39.) How did you hear about this Summit?

	Radio	TV	Internet	Print Media – Newspaper	Word of Mouth or Phone	Written Invitation	Recommendation or Notice by Association, Group, Not-for-profit, or Coalition	Other
20-30	0.00%	0.00%	0.00%	0.00%	0.00%	0.00%	100.00%	0.00%
31-40	0.00%	0.00%	0.00%	0.00%	16.67%	50.00%	33.33%	0.00%
41-50	0.00%	0.00%	36.84%	10.53%	15.79%	10.53%	21.05%	5.26%
51-60	4.35%	0.00%	17.39%	0.00%	13.04%	17.39%	43.48%	4.35%
61-70	0.00%	0.00%	33.33%	16.67%	11.11%	16.67%	22.22%	0.00%
71-80	0.00%	0.00%	0.00%	0.00%	0.00%	50.00%	50.00%	0.00%
81-90	0.00%	0.00%	0.00%	0.00%	0.00%	100.00%	0.00%	0.00%
Over 90	0.00%	0.00%	0.00%	100.00%	0.00%	0.00%	0.00%	0.00%



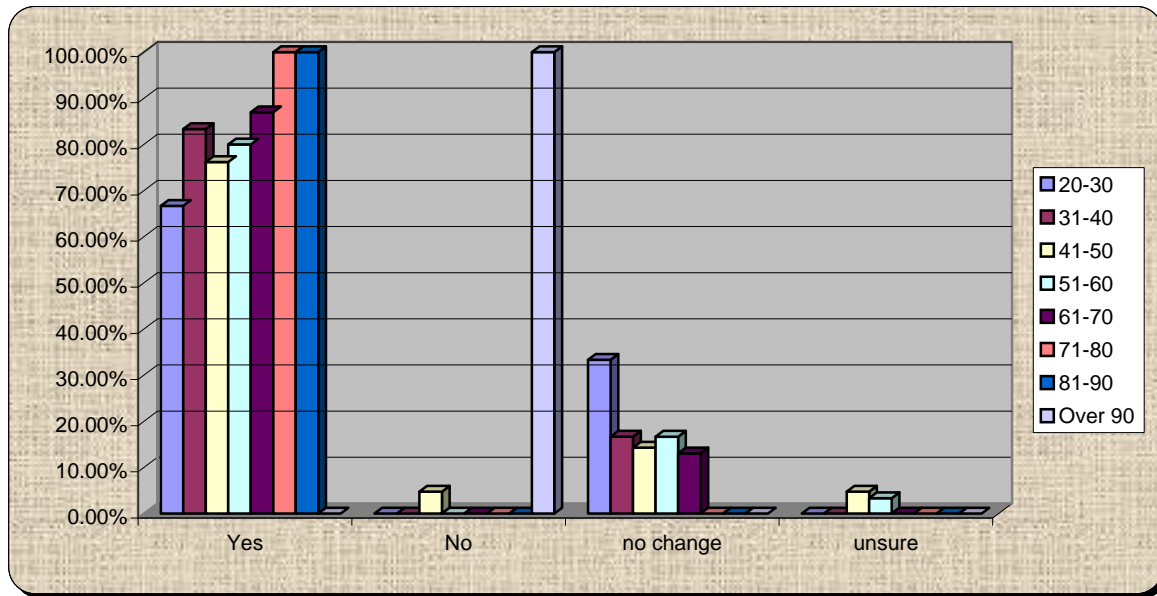
40.) How did you hear about this Summit?

	Radio	TV	Internet	Print Media – Newspaper	Word of Mouth or Phone	Written Invitation	Recommendation or Notice by Association, Group, Not-for-profit, or Coalition	Other
20-30	0.00%	0.00%	0.00%	0.00%	0.00%	0.00%	100.00%	0.00%
31-40	0.00%	0.00%	33.33%	0.00%	16.67%	16.67%	16.67%	16.67%
41-50	0.00%	0.00%	63.16%	10.53%	0.00%	5.26%	21.05%	0.00%
51-60	3.33%	0.00%	60.00%	3.33%	10.00%	3.33%	16.67%	3.33%
61-70	0.00%	0.00%	59.09%	13.64%	9.09%	9.09%	9.09%	0.00%
71-80	0.00%	0.00%	100.00%	0.00%	0.00%	0.00%	0.00%	0.00%
81-90	0.00%	0.00%	0.00%	0.00%	0.00%	0.00%	100.00%	0.00%
Over 90	0.00%	0.00%	0.00%	100.00%	0.00%	0.00%	0.00%	0.00%



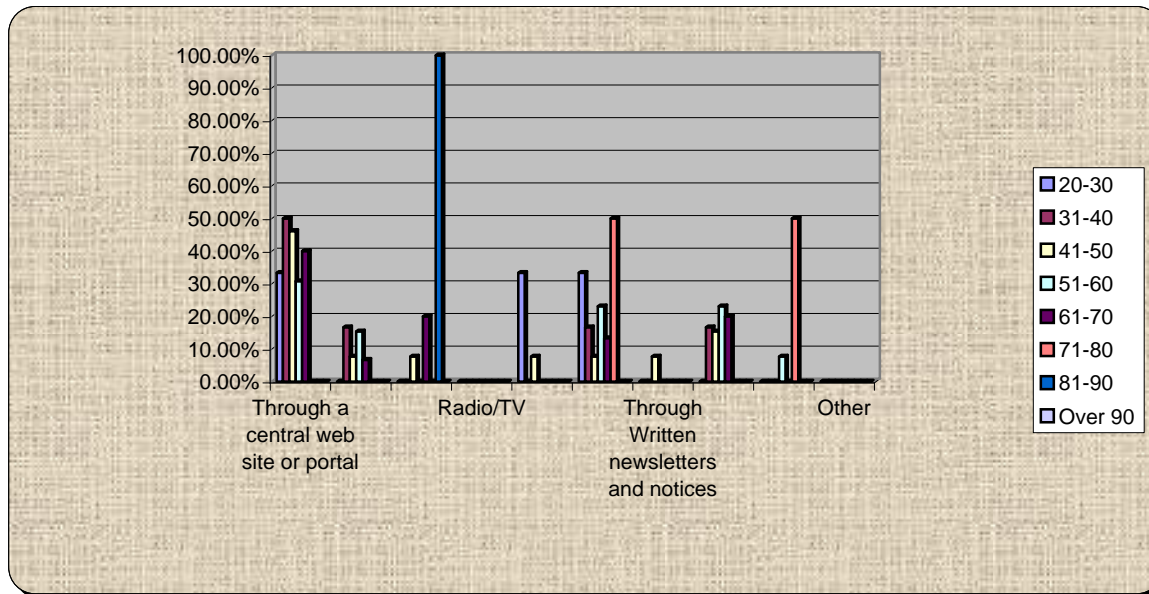
41.) I Feel I have improved access to data and information going forward

	Yes	No	no change	unsure
20-30	66.67%	0.00%	33.33%	0.00%
31-40	83.33%	0.00%	16.67%	0.00%
41-50	76.19%	4.76%	14.29%	4.76%
51-60	80.00%	0.00%	16.67%	3.33%
61-70	86.96%	0.00%	13.04%	0.00%
71-80	100.00%	0.00%	0.00%	0.00%
81-90	100.00%	0.00%	0.00%	0.00%
Over 90	0.00%	100.00%	0.00%	0.00%



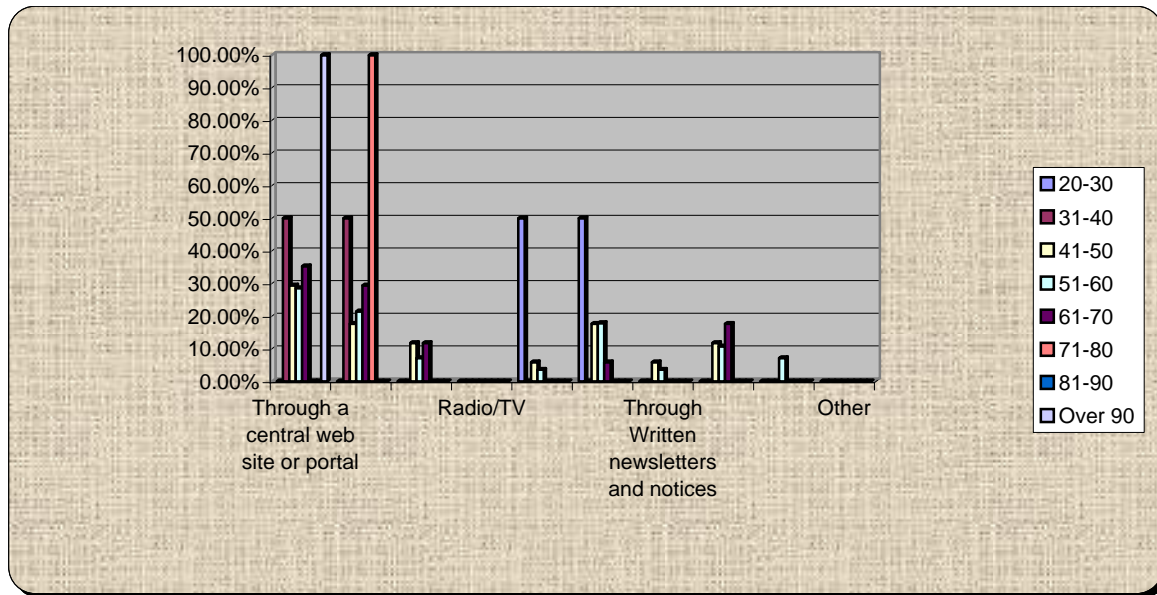
42.) I think the best way to keep up with trends, ideas, and developments regarding Voluisa's growth is:

	Through a central web site or portal	Through general media – electronic	Print media	Radio/TV	Through VCOG Meetings	Through Summits like this	Through Written newsletters and notices	Through all partner, government, and organizational web sites	Through myregion.org	Other
20-30	33.33%	0.00%	0.00%	0.00%	33.33%	33.33%	0.00%	0.00%	0.00%	0.00%
31-40	50.00%	16.67%	0.00%	0.00%	0.00%	16.67%	0.00%	16.67%	0.00%	0.00%
41-50	46.15%	7.69%	7.69%	0.00%	7.69%	7.69%	7.69%	15.38%	0.00%	0.00%
51-60	30.77%	15.38%	0.00%	0.00%	0.00%	23.08%	0.00%	23.08%	7.69%	0.00%
61-70	40.00%	6.67%	20.00%	0.00%	0.00%	13.33%	0.00%	20.00%	0.00%	0.00%
71-80	0.00%	0.00%	0.00%	0.00%	0.00%	50.00%	0.00%	0.00%	50.00%	0.00%
81-90	0.00%	0.00%	100.00%	0.00%	0.00%	0.00%	0.00%	0.00%	0.00%	0.00%
Over 90	0%	0%	0%	0%	0%	0%	0%	0%	0%	0%



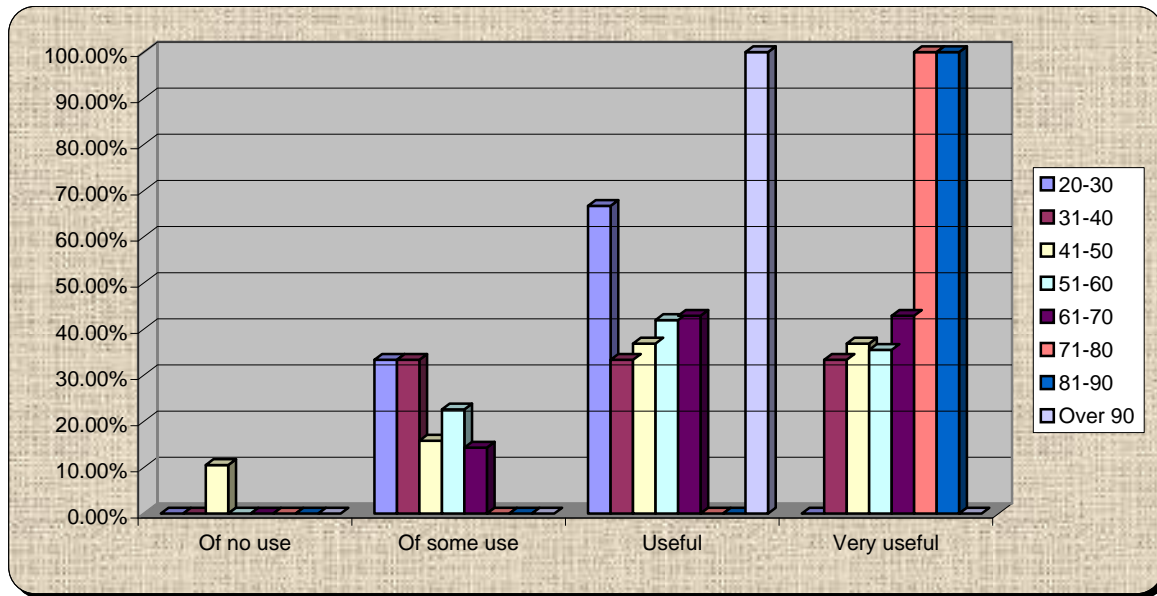
43.) I think the best way to keep up with trends, ideas, and developments regarding Voluisa's growth is:

	Through a central web site or portal	Through general media – electronic	Print media	Radio/TV	Through VCOG Meetings	Through Summits like this	Through Written newsletters and notices	Through an partner, government, and organizational	Through myregion.org	Other
20-30	0.00%	0.00%	0.00%	0.00%	50.00%	50.00%	0.00%	0.00%	0.00%	0.00%
31-40	50.00%	50.00%	0.00%	0.00%	0.00%	0.00%	0.00%	0.00%	0.00%	0.00%
41-50	29.41%	17.65%	11.76%	0.00%	5.88%	17.65%	5.88%	11.76%	0.00%	0.00%
51-60	28.57%	21.43%	7.14%	0.00%	3.57%	17.86%	3.57%	10.71%	7.14%	0.00%
61-70	35.29%	29.41%	11.76%	0.00%	0.00%	5.88%	0.00%	17.65%	0.00%	0.00%
71-80	0.00%	100.00%	0.00%	0.00%	0.00%	0.00%	0.00%	0.00%	0.00%	0.00%
81-90	0%	0%	0%	0%	0%	0%	0%	0%	0%	0%
Over 90	100.00%	0.00%	0.00%	0.00%	0.00%	0.00%	0.00%	0.00%	0.00%	0.00%



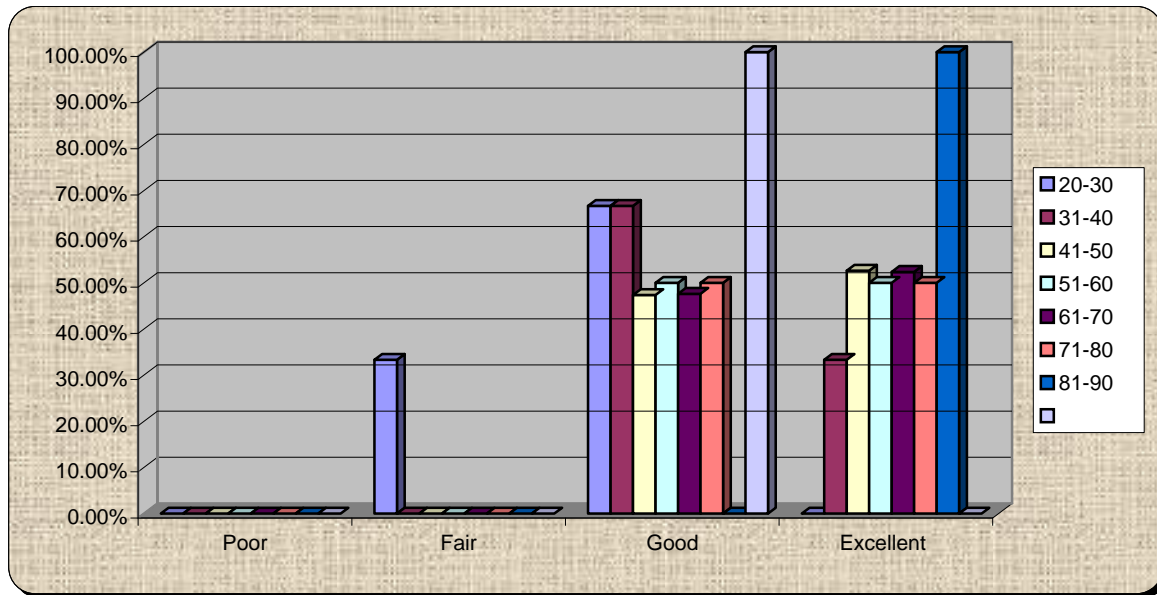
44.) For me personally - The data, information, and updates provided in this summit were:

	Of no use	Of some use	Useful	Very useful
20-30	0.00%	33.33%	66.67%	0.00%
31-40	0.00%	33.33%	33.33%	33.33%
41-50	10.53%	15.79%	36.84%	36.84%
51-60	0.00%	22.58%	41.94%	35.48%
61-70	0.00%	14.29%	42.86%	42.86%
71-80	0.00%	0.00%	0.00%	100.00%
81-90	0.00%	0.00%	0.00%	100.00%
Over 90	0.00%	0.00%	100.00%	0.00%



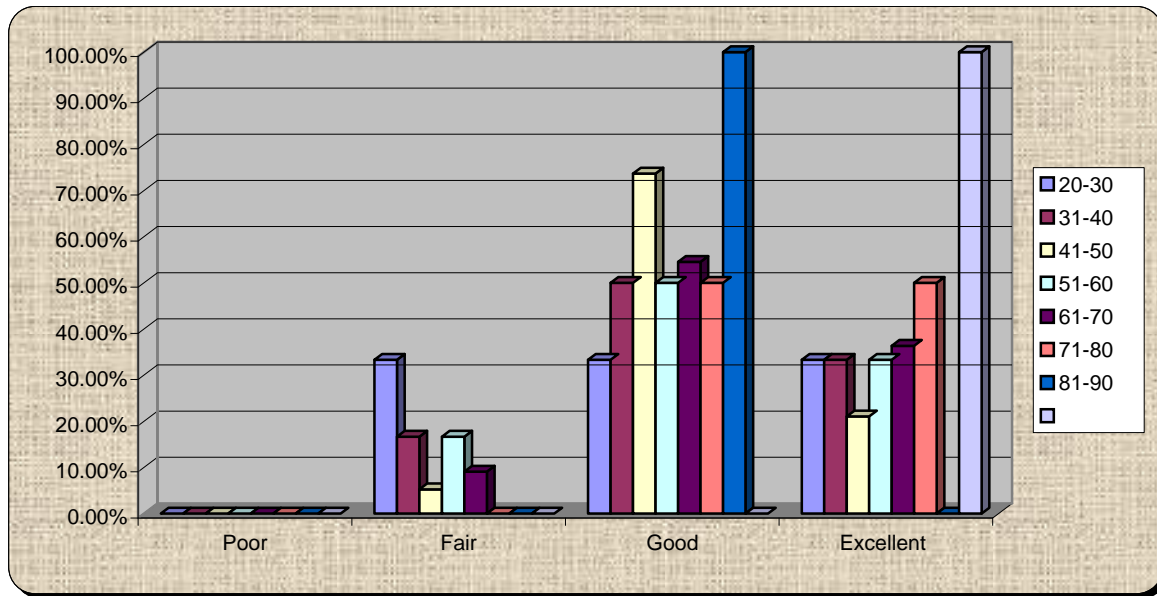
45.) As a team, Speakers, panelists, and facilitators were:

	Poor	Fair	Good	Excellent
20-30	0.00%	33.33%	66.67%	0.00%
31-40	0.00%	0.00%	66.67%	33.33%
41-50	0.00%	0.00%	47.37%	52.63%
51-60	0.00%	0.00%	50.00%	50.00%
61-70	0.00%	0.00%	47.62%	52.38%
71-80	0.00%	0.00%	50.00%	50.00%
81-90	0.00%	0.00%	0.00%	100.00%
Over 90	0.00%	0.00%	100.00%	0.00%



46.) Workshops were:

	Poor	Fair	Good	Excellent
20-30	0.00%	33.33%	33.33%	33.33%
31-40	0.00%	16.67%	50.00%	33.33%
41-50	0.00%	5.26%	73.68%	21.05%
51-60	0.00%	16.67%	50.00%	33.33%
61-70	0.00%	9.09%	54.55%	36.36%
71-80	0.00%	0.00%	50.00%	50.00%
81-90	0.00%	0.00%	100.00%	0.00%
Over 90	0.00%	0.00%	0.00%	100.00%



47.) How did you hear about this Summit?

	Radio	TV	Internet Web site driven	Internet email from event	Internet email from colleagues	Print Media – Newspaper	Word of Mouth or Phone	Written Invitation	Recommendation or Notice by Association, Group, Not-for-profit, or Coalition	Other
20-30	0.00%	0.00%	0.00%	0.00%	0.00%	0.00%	0.00%	0.00%	66.67%	33.33%
31-40	0.00%	0.00%	0.00%	33.33%	16.67%	0.00%	16.67%	16.67%	16.67%	0.00%
41-50	0.00%	0.00%	10.00%	25.00%	35.00%	10.00%	5.00%	0.00%	15.00%	0.00%
51-60	6.45%	0.00%	0.00%	38.71%	22.58%	3.23%	6.45%	3.23%	12.90%	6.45%
61-70	0.00%	0.00%	4.76%	42.86%	14.29%	14.29%	9.52%	4.76%	9.52%	0.00%
71-80	0.00%	0.00%	0.00%	0.00%	50.00%	0.00%	50.00%	0.00%	0.00%	0.00%
81-90	0.00%	0.00%	0.00%	100.00%	0.00%	0.00%	0.00%	0.00%	0.00%	0.00%
Over 90	0.00%	0.00%	0.00%	0.00%	0.00%	100.00%	0.00%	0.00%	0.00%	0.00%

