

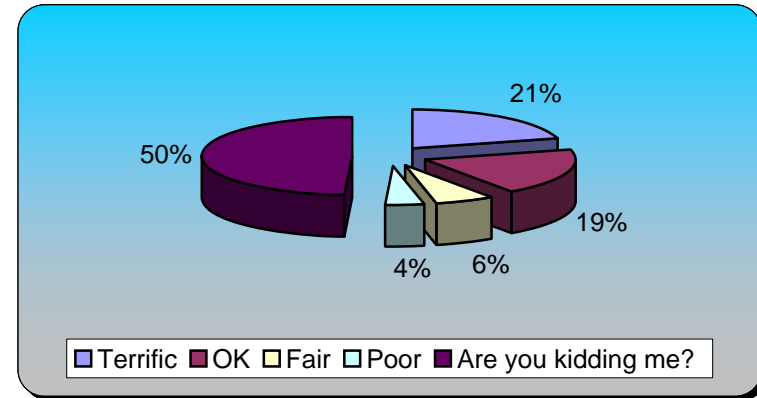
## Turning Graphical Results by Question

Session Name: Current Session

Created: 7/3/2007 2:47 PM

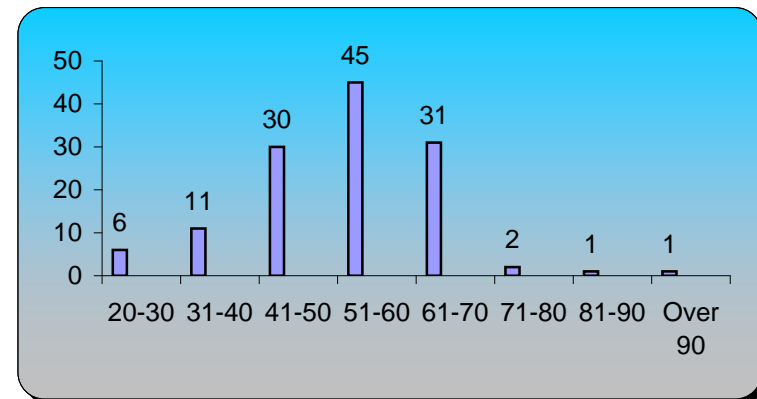
### 1.) How does it feel to get up to attend an event on a Saturday morning? Terrific

	Responses	
Terrific	26	20.97%
OK	24	19.35%
Fair	8	6.45%
Poor	5	4.03%
Are you kidding me?	61	49.19%
<b>Totals</b>	<b>124</b>	<b>100%</b>



### 2.) What is your age?

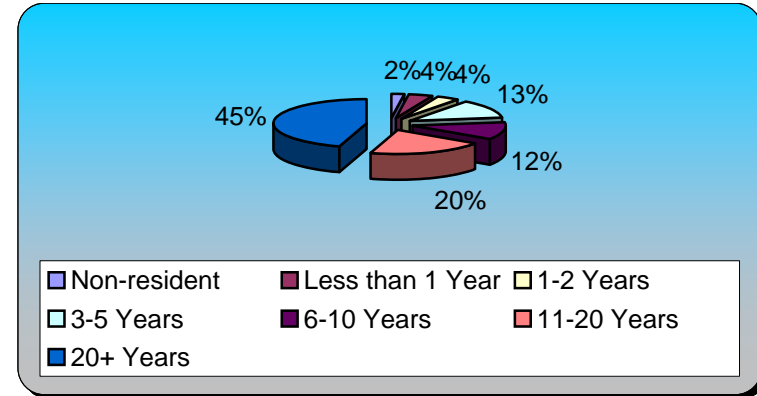
	Responses	
20-30	6	4.72%
31-40	11	8.66%
41-50	30	23.62%
51-60	45	35.43%
61-70	31	24.41%
71-80	2	1.57%
81-90	1	0.79%
Over 90	1	0.79%
<b>Totals</b>	<b>127</b>	<b>100%</b>



**3.) How long have you lived in Volusia County?**

**Responses**

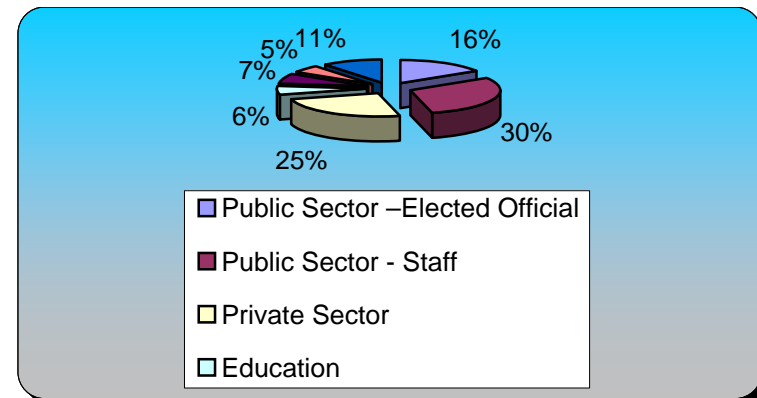
Non-resident	3	2.34%
Less than 1 Year	5	3.91%
1-2 Years	5	3.91%
3-5 Years	16	12.50%
6-10 Years	15	11.72%
11-20 Years	26	20.31%
20+ Years	58	45.31%
<b>Totals</b>	<b>128</b>	<b>100%</b>



**4.) What do you do for a living?**

**Responses**

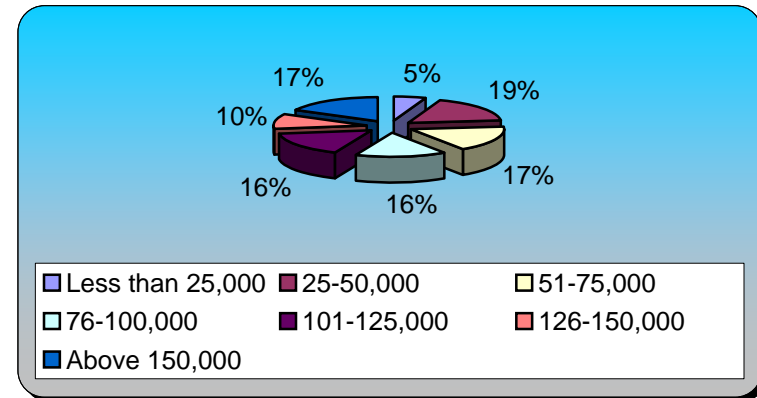
Public Sector –Elected Official	21	16.15%
Public Sector - Staff	39	30%
Private Sector	32	24.62%
Education	8	6.15%
Community Based Organization	9	6.92%
Other	7	5.38%
Retired	14	10.77%
<b>Totals</b>	<b>130</b>	<b>100%</b>



**5.) Annual Income?**

**Responses**

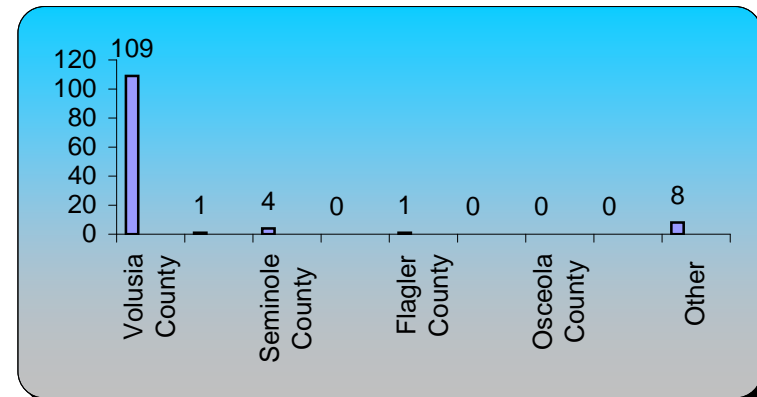
Less than 25,000	7	5.47%
25-50,000	23	17.97%
51-75,000	22	17.19%
76-100,000	20	15.62%
101-125,000	21	16.41%
126-150,000	13	10.16%
Above 150,000	22	17.19%
<b>Totals</b>	<b>128</b>	<b>100%</b>



**6.) Where do you work?**

**Responses**

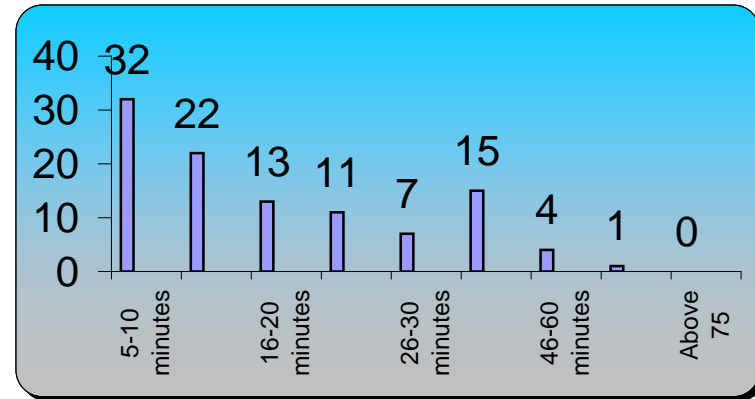
Volusia County	109	88.62%
Orange County	1	0.81%
Seminole County	4	3.25%
Brevard County	0	0%
Flagler County	1	0.81%
Lake County	0	0%
Osceola County	0	0%
Duval County	0	0%
Other	8	6.50%
<b>Totals</b>	<b>123</b>	<b>100%</b>



**7.) How long does it take you to get to work?**

**Responses**

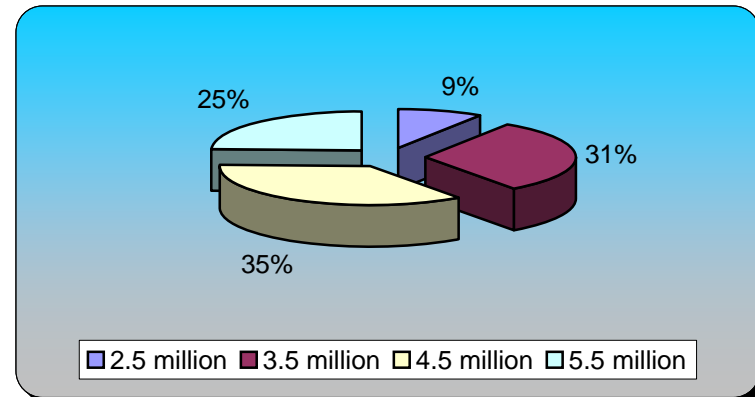
5-10 minutes	32	30.48%
11-15 minutes	22	20.95%
16-20 minutes	13	12.38%
21-25 minutes	11	10.48%
26-30 minutes	7	6.67%
31-45 minutes	15	14.29%
46-60 minutes	4	3.81%
60-75 minutes	1	0.95%
Above 75 minutes	0	0%
<b>Totals</b>	<b>105</b>	<b>100%</b>



**8.) What is the population of the 7 County Central Florida Region?**

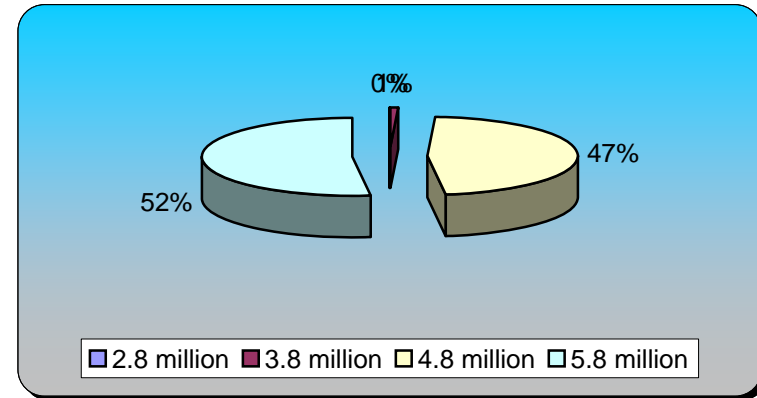
**Responses**

2.5 million	10	9.09%
<b>3.5 million</b>	<b>34</b>	<b>30.91%</b>
4.5 million	39	35.45%
5.5 million	27	24.55%
<b>Totals</b>	<b>110</b>	<b>100%</b>



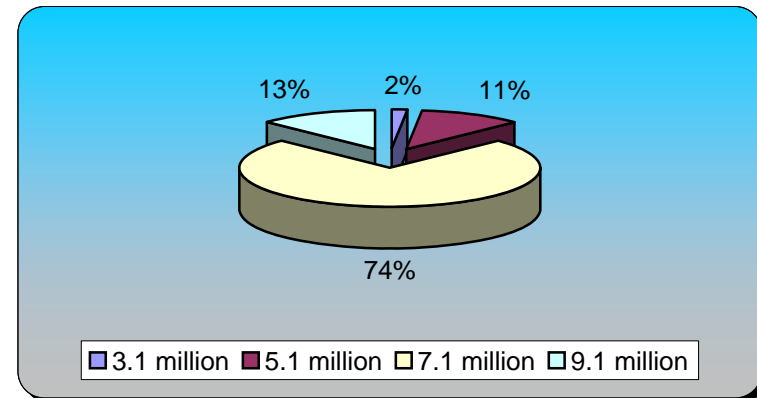
**9.) What is the projected population of Central Florida in 2020?**

	Responses	
2.8 million	0	0%
3.8 million	1	0.81%
<b>4.8 million</b>	<b>58</b>	<b>47.15%</b>
5.8 million	64	52.03%
<b>Totals</b>	<b>123</b>	<b>100%</b>



**10.) What is the projected population of Central Florida in 2050?**

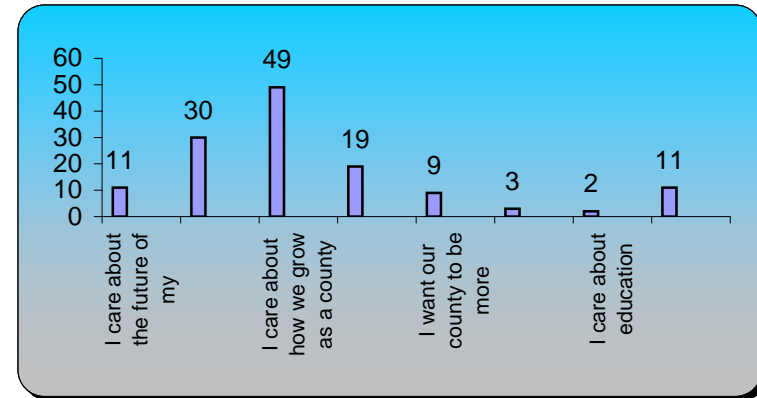
	Responses	
3.1 million	2	1.61%
5.1 million	14	11.29%
<b>7.1 million</b>	<b>92</b>	<b>74.19%</b>
9.1 million	16	12.90%
<b>Totals</b>	<b>124</b>	<b>100%</b>



**11.) Why are you here – Best Answer?**

**Responses**

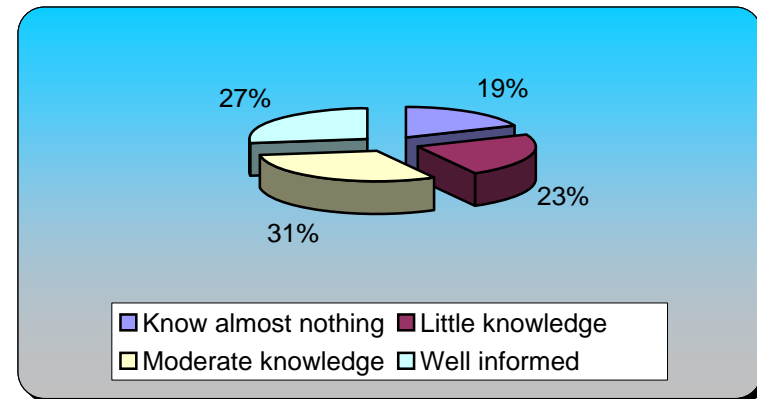
I care about the future of my neighborhood	11	8.21%
I care about protecting the environment	30	22.39%
I care about how we grow as a county	49	36.57%
I care about how we grow in relation to the r...	19	14.18%
I want our county to be more economically com...	9	6.72%
I want to network with leaders and members of...	3	2.24%
I care about education	2	1.49%
Other	11	8.21%
<b>Totals</b>	<b>134</b>	<b>100%</b>



**12.) How informed am I about myregion.org? Scale of 1 to 5, 5 well informed and 1 know almost nothing**

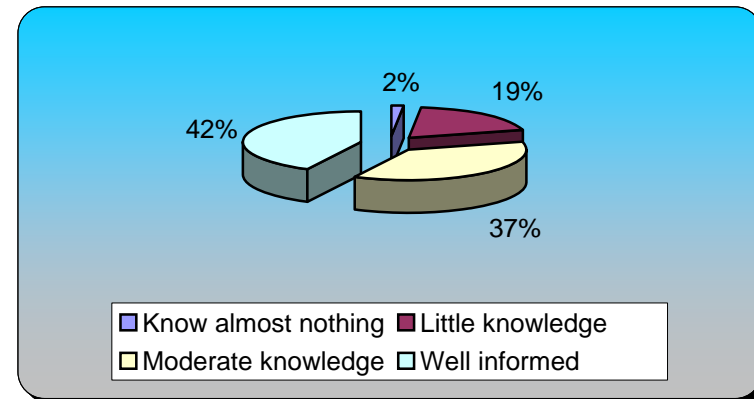
**Responses**

Know almost nothing	24	18.60%
Little knowledge	30	23.26%
Moderate knowledge	40	31.01%
Well informed	35	27.13%
<b>Totals</b>	<b>129</b>	<b>100%</b>



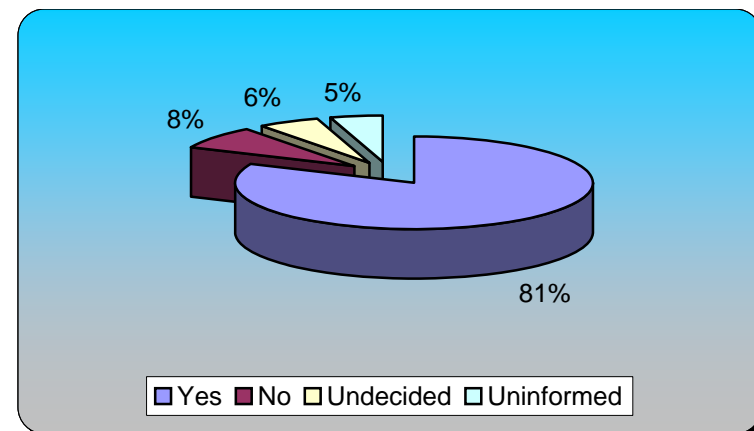
**13.) How informed am I about growth planning and priorities in Volusia?**

	Responses	
Know almost nothing	2	1.60%
Little knowledge	24	19.20%
Moderate knowledge	46	36.80%
Well informed	53	42.40%
<b>Totals</b>	<b>125</b>	<b>100%</b>



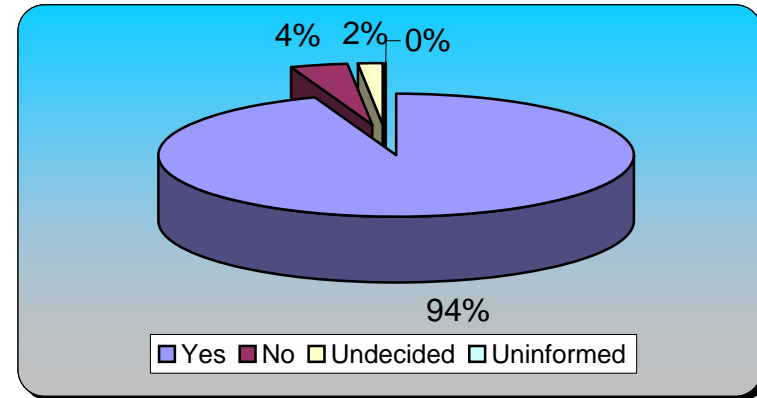
**14.) Do you support minimum environmental standards countywide?**

	Responses	
Yes	103	81.75%
No	10	7.94%
Undecided	7	5.56%
Uninformed	6	4.76%
<b>Totals</b>	<b>126</b>	<b>100%</b>



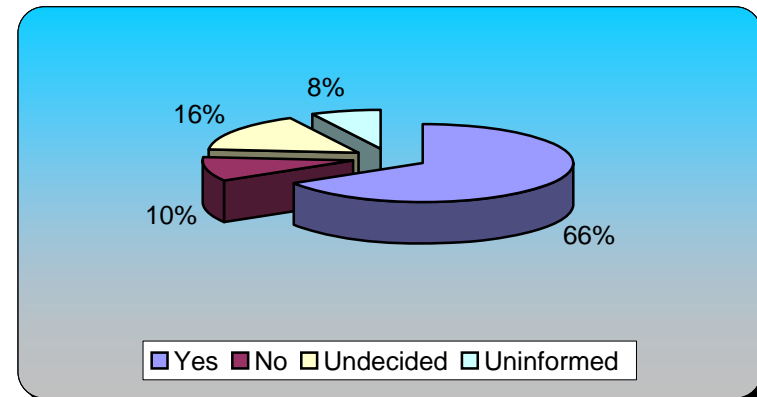
**15.) Do you believe protecting natural areas will benefit your quality of life?**

	<b>Responses</b>	
Yes	119	94.44%
No	5	3.97%
Undecided	2	1.59%
Uninformed	0	0%
<b>Totals</b>	<b>126</b>	<b>100%</b>



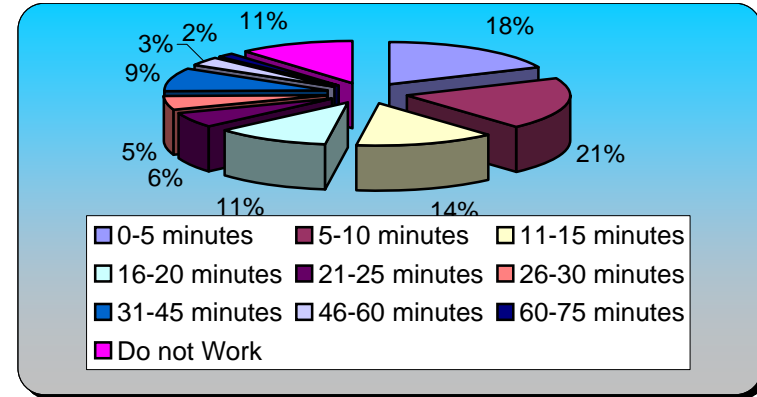
**16.) Do you support smart growth tools such as transfer of development rights to protect rural and natural areas?**

	<b>Responses</b>	
Yes	79	66.39%
No	12	10.08%
Undecided	19	15.97%
Uninformed	9	7.56%
<b>Totals</b>	<b>119</b>	<b>100%</b>



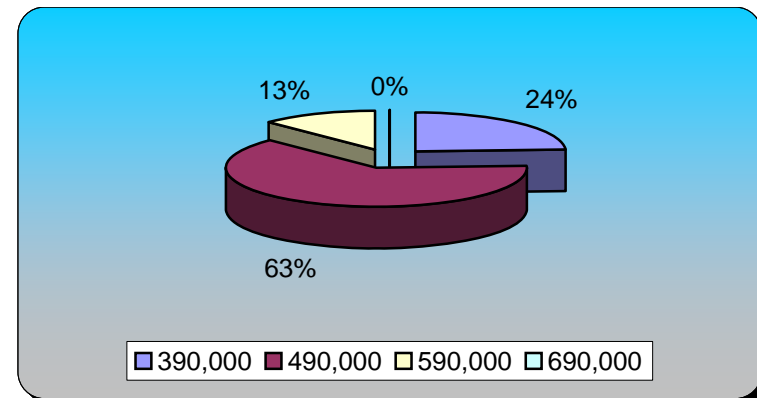
**17.) Re-poll: How long does it take you to get to work?**

	Responses	
0-5 minutes	21	18.26%
5-10 minutes	23	20%
11-15 minutes	16	13.91%
16-20 minutes	13	11.30%
21-25 minutes	7	6.09%
26-30 minutes	6	5.22%
31-45 minutes	10	8.70%
46-60 minutes	4	3.48%
60-75 minutes	2	1.74%
Do not Work	13	11.30%
<b>Totals</b>	<b>115</b>	<b>100%</b>



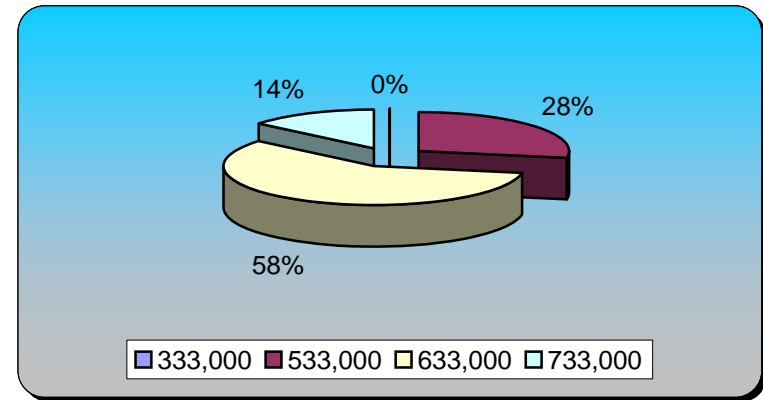
**18.) What is the population of Volusia County?**

	Responses	
390,000	27	24.11%
<b>490,000</b>	<b>71</b>	<b>63.39%</b>
590,000	14	12.50%
690,000	0	0%
<b>Totals</b>	<b>112</b>	<b>100%</b>



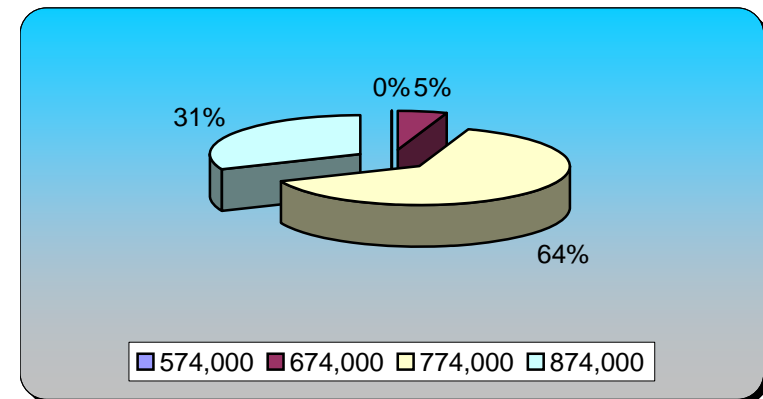
**19.) What is the projected population of Volusia County in 2020?**

	Responses	
333,000	0	0%
533,000	32	27.83%
<b>633,000</b>	<b>67</b>	<b>58.26%</b>
733,000	16	13.91%
<b>Totals</b>	<b>115</b>	<b>100%</b>



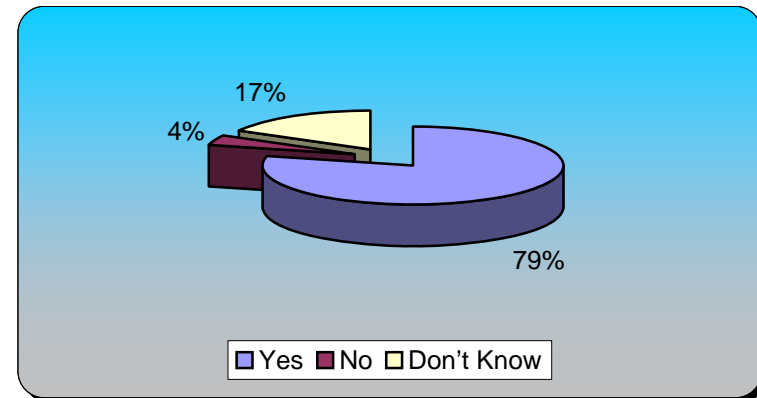
**20.) What is the projected population of Volusia County in 2050?**

	Responses	
574,000	0	0%
674,000	6	5.22%
774,000	73	63.48%
<b>874,000</b>	<b>36</b>	<b>31.30%</b>
<b>Totals</b>	<b>115</b>	<b>100%</b>



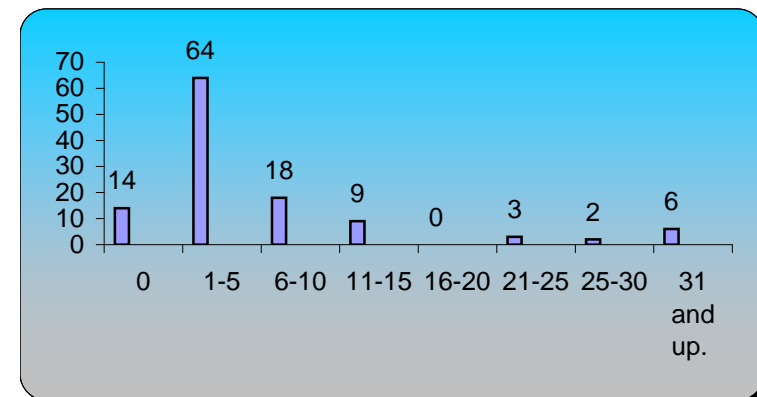
**21.) Do you believe sustainable communities will support a strong local economy?**

	Responses	
Yes	93	78.81%
No	5	4.24%
Don't Know	20	16.95%
<b>Totals</b>	<b>118</b>	<b>100%</b>



**22.) How many days per month do you leave the borders of Volusia for commercial, educational, entertainment, healthcare or other activities?**

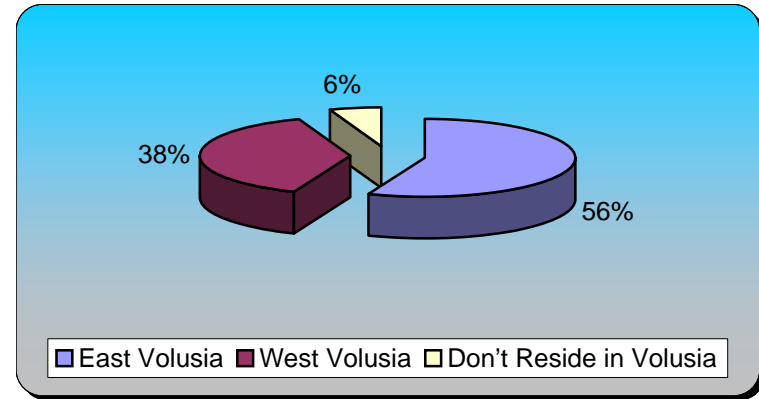
	Responses	
0	14	12.07%
1-5	64	55.17%
6-10	18	15.52%
11-15	9	7.76%
16-20	0	0%
21-25	3	2.59%
25-30	2	1.72%
31 and up.	6	5.17%
<b>Totals</b>	<b>116</b>	<b>100%</b>



**23.) Where do you reside?**

**Responses**

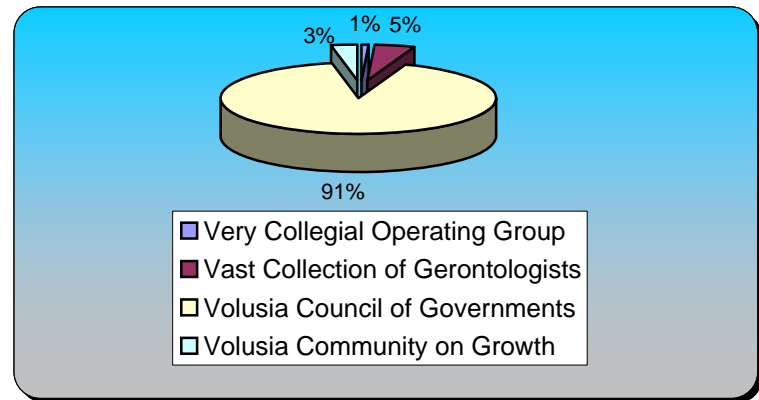
East Volusia	69	56.10%
West Volusia	47	38.21%
Don't Reside in Volusia	7	5.69%
<b>Totals</b>	<b>123</b>	<b>100%</b>



**24.) What is VCOG:**

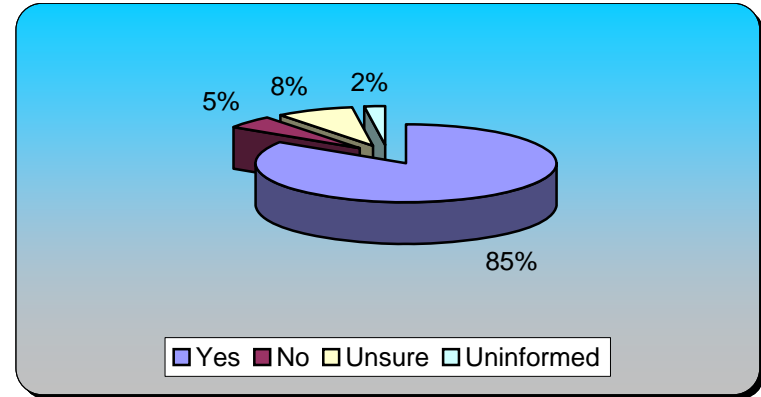
**Responses**

Very Collegial Operating Group	1	0.79%
Vast Collection of Gerontologists	6	4.72%
Volusia Council of Governments	116	91.34%
Volusia Community on Growth	4	3.15%
<b>Totals</b>	<b>127</b>	<b>100%</b>



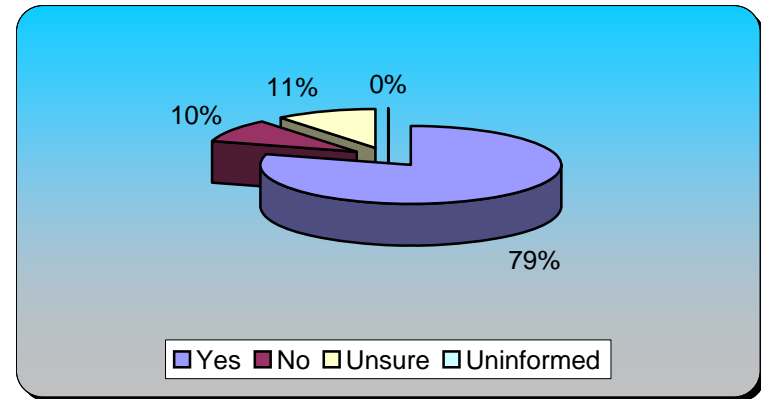
**25.) Accelerating deployment of the right transportation technology will make a difference in achieving a sustainable future**

	Responses	
Yes	80	84.21%
No	5	5.26%
Unsure	8	8.42%
Uninformed	2	2.11%
<b>Totals</b>	<b>95</b>	<b>100%</b>



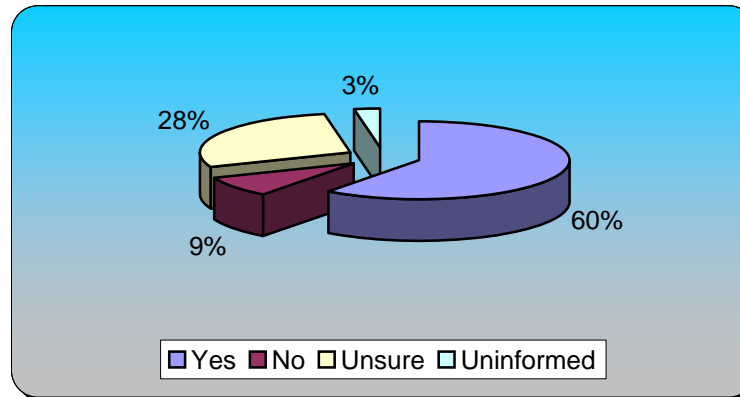
**26.) Commuter rail is a vital component of our sustainable community**

	Responses	
Yes	81	79.41%
No	10	9.80%
Unsure	11	10.78%
Uninformed	0	0%
<b>Totals</b>	<b>102</b>	<b>100%</b>



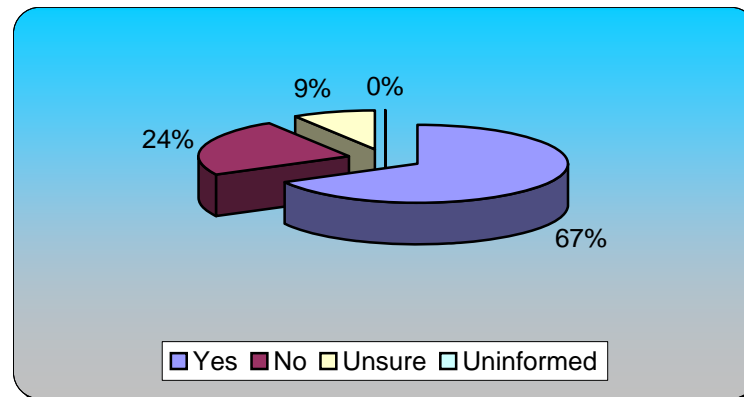
**27.) I understand how A & B operate and what scenarios they represent**

	Responses	
Yes	62	60.19%
No	9	8.74%
Unsure	29	28.16%
Uninformed	3	2.91%
<b>Totals</b>	<b>103</b>	<b>100%</b>



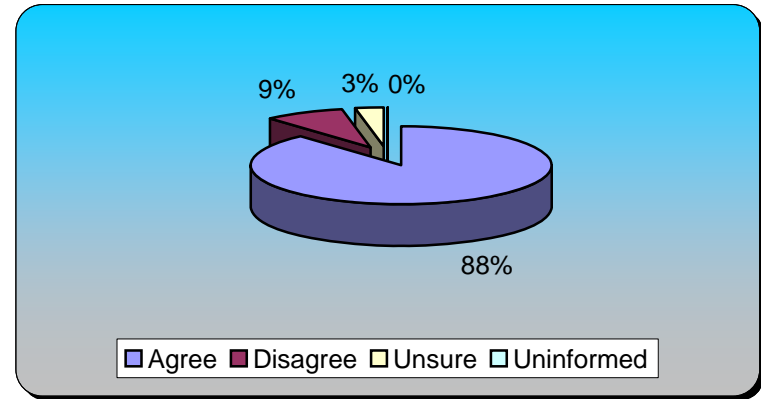
**28.) Communicating the complexity of systems and infrastructure is our most serious barrier to success**

	Responses	
Yes	68	67.33%
No	24	23.76%
Unsure	9	8.91%
Uninformed	0	0%
<b>Totals</b>	<b>101</b>	<b>100%</b>



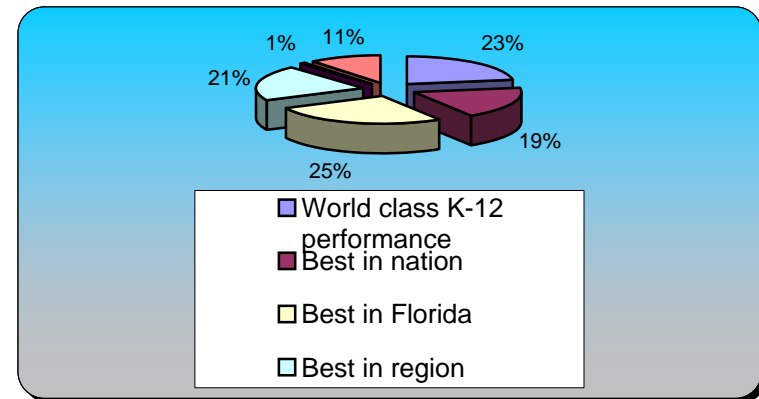
**29.) We can't achieve our vision without culture change**

	Responses	
Agree	90	88.24%
Disagree	9	8.82%
Unsure	3	2.94%
Uninformed	0	0%
<b>Totals</b>	<b>102</b>	<b>100%</b>



**30.) Achieving our vision requires:**

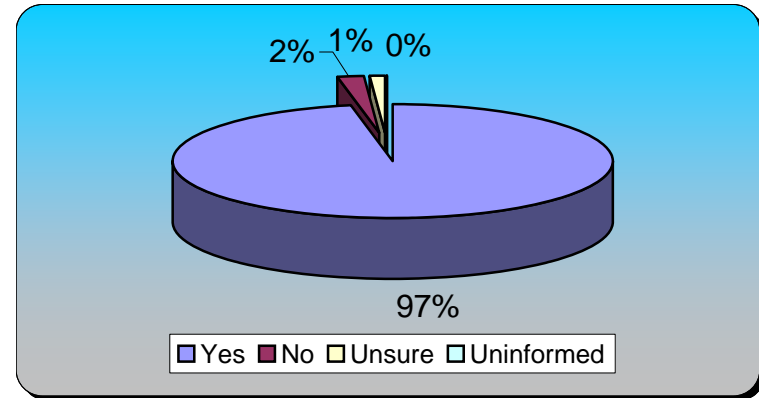
	Responses	
World class K-12 performance	23	22.55%
Best in nation	19	18.63%
Best in Florida	27	26.47%
Best in region	21	20.59%
Stay the same	1	0.98%
Not a factor	11	10.78%
<b>Totals</b>	<b>102</b>	<b>100%</b>



**31.) I want to keep up with this effort**

**Responses**

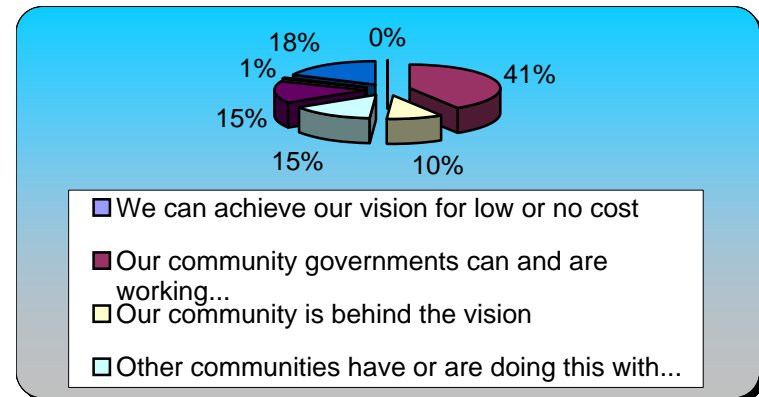
Yes	98	97.03%
No	2	1.98%
Unsure	1	0.99%
Uninformed	0	0%
<b>Totals</b>	<b>101</b>	<b>100%</b>



**32.) What is the most important and credible message for your neighbor?**

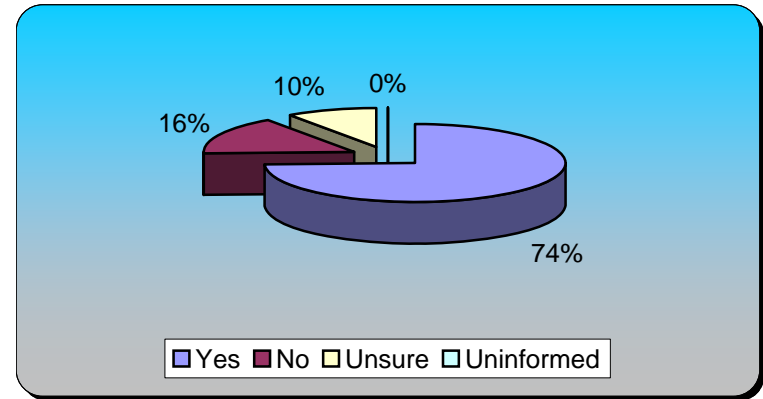
**Responses**

We can achieve our vision for low or no cost	0	0%
Our community governments can and are working...	41	41%
Our community is behind the vision	10	10%
Other communities have or are doing this with...	15	15%
Our region cares	15	15%
State policy and regulations are supportive	1	1%
Other	18	18%
<b>Totals</b>	<b>100</b>	<b>100%</b>



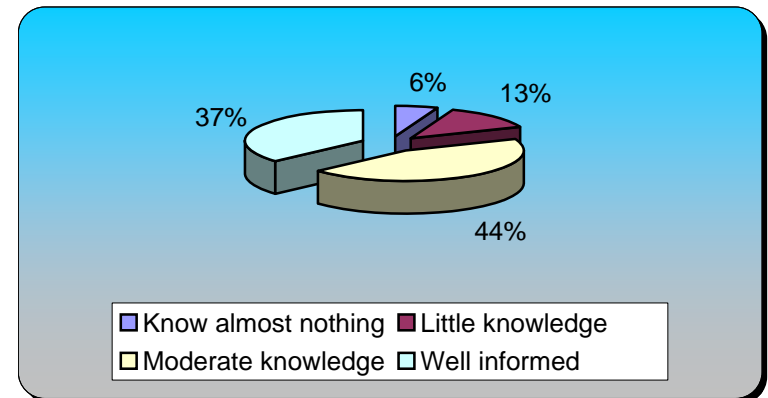
**33.) Would you pay the extra money to bypass congestion?**

	Responses	
Yes	76	74.51%
No	16	15.69%
Unsure	10	9.80%
Uninformed	0	0%
<b>Totals</b>	<b>102</b>	<b>100%</b>



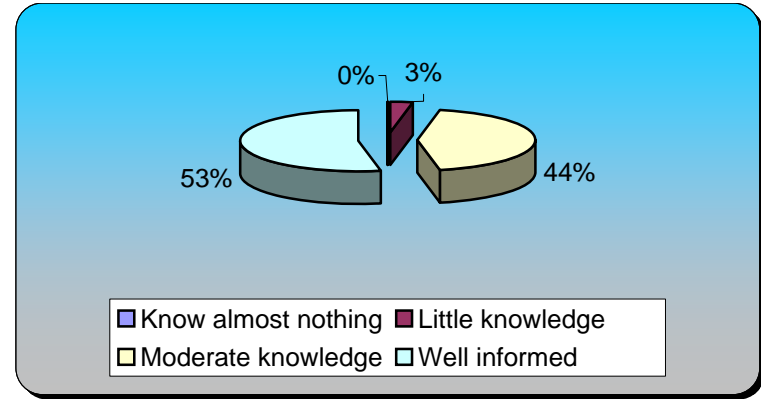
**34.) How informed am I about myregion.org? Scale of 1 to 4, 4 well informed and 1 know almost nothing**

	Responses	
Know almost nothing	6	5.94%
Little knowledge	13	12.87%
Moderate knowledge	45	44.55%
Well informed	37	36.63%
<b>Totals</b>	<b>101</b>	<b>100%</b>



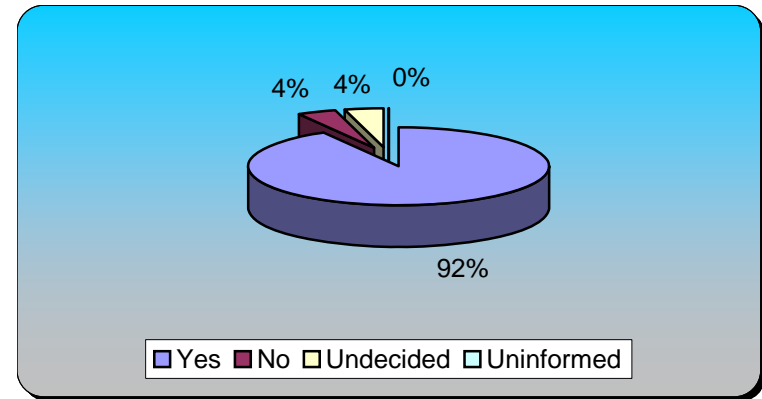
**35.) How informed am I about growth planning and priorities in Volusia?**

	Responses	
Know almost nothing	0	0%
Little knowledge	3	3.06%
Moderate knowledge	43	43.88%
Well informed	52	53.06%
<b>Totals</b>	<b>98</b>	<b>100%</b>



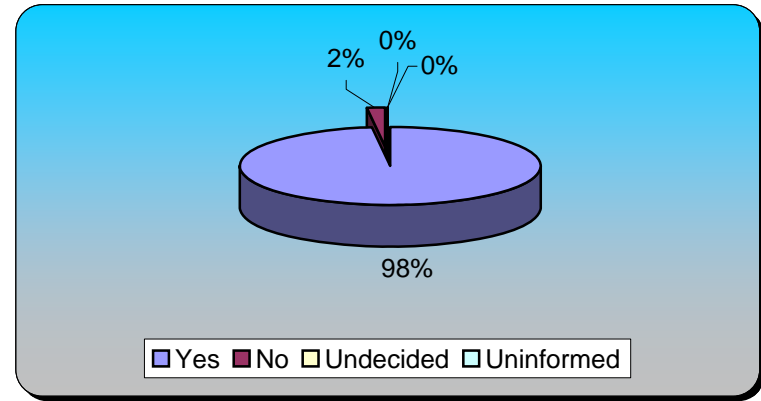
**36.) Do you support minimum environmental standards countywide?**

	Responses	
Yes	89	91.75%
No	4	4.12%
Undecided	4	4.12%
Uninformed	0	0%
<b>Totals</b>	<b>97</b>	<b>100%</b>



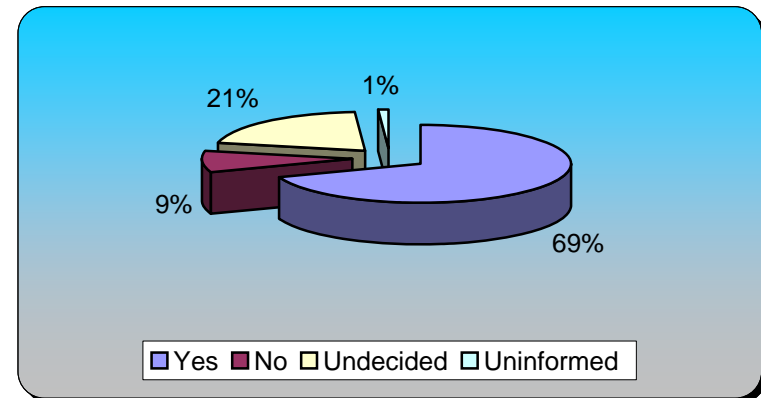
**37.) Do you believe protecting natural areas will benefit your quality of life?**

	Responses	
Yes	97	97.98%
No	2	2.02%
Undecided	0	0%
Uninformed	0	0%
<b>Totals</b>	<b>99</b>	<b>100%</b>



**38.) Do you support smart growth tools such as transfer of development rights to protect rural and natural areas?**

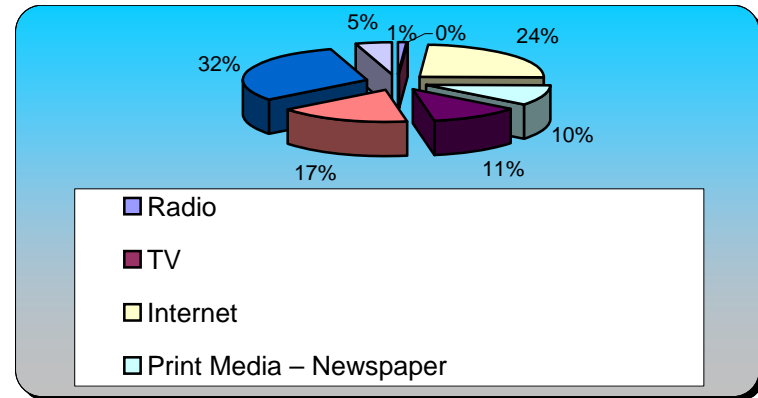
	Responses	
Yes	70	69.31%
No	9	8.91%
Undecided	21	20.79%
Uninformed	1	0.99%
<b>Totals</b>	<b>101</b>	<b>100%</b>



**39.) How did you hear about this Summit?**

**Responses**

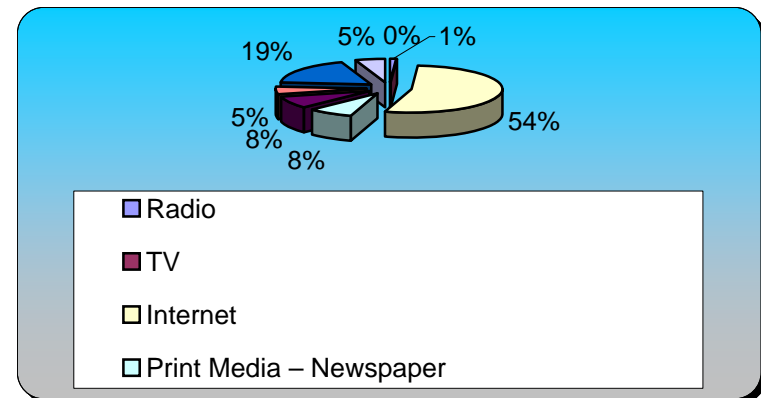
Radio	1	1.15%
TV	0	0%
Internet	21	24.14%
Print Media – Newspaper	9	10.34%
Word of Mouth or Phone	10	11.49%
Written Invitation	15	17.24%
Recommendation or Notice by Association, Grou...	27	31.03%
Other	4	4.60%
<b>Totals</b>	<b>87</b>	<b>100%</b>



**40.) How did you hear about this Summit?**

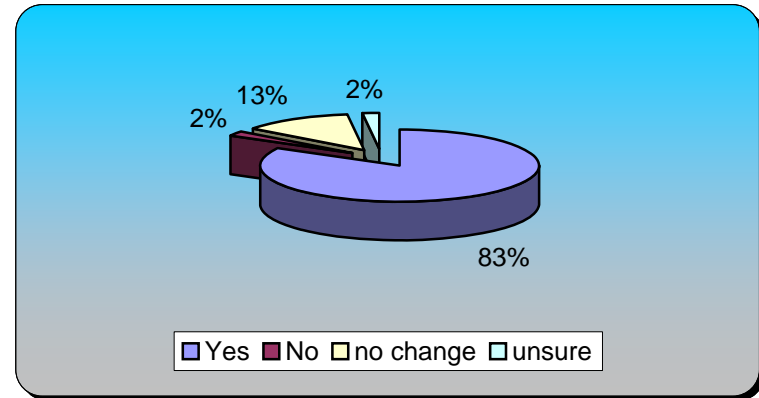
**Responses**

Radio	1	1.03%
TV	0	0%
Internet	52	53.61%
Print Media – Newspaper	8	8.25%
Word of Mouth or Phone	8	8.25%
Written Invitation	5	5.15%
Recommendation or Notice by Association, Grou...	18	18.56%
Other	5	5.15%
<b>Totals</b>	<b>97</b>	<b>100%</b>



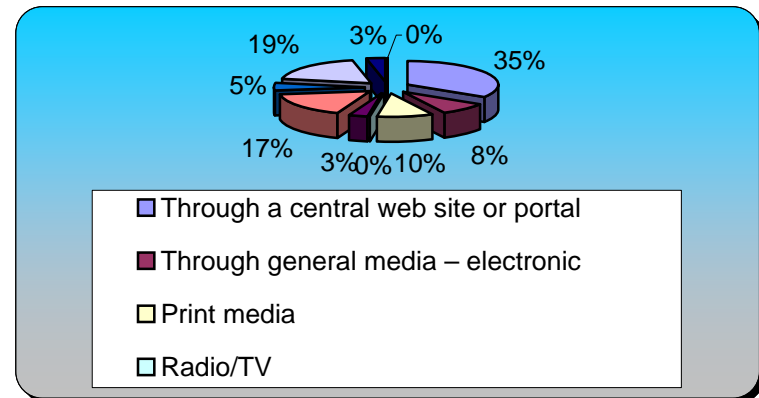
**41.) I Feel I have improved access to data and information going forward**

	Responses	
Yes	84	83.17%
No	2	1.98%
no change	13	12.87%
unsure	2	1.98%
<b>Totals</b>	<b>101</b>	<b>100%</b>



**42.) I think the best way to keep up with trends, ideas, and developments regarding Voluisa's growth is:**

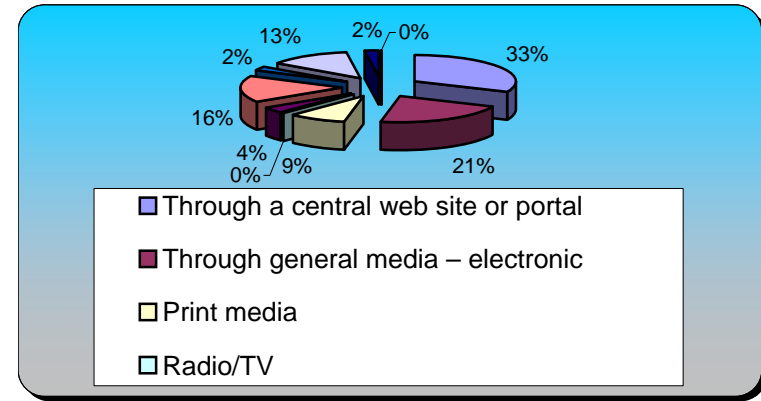
	Responses	
Through a central web site or portal	20	33.90%
Through general media – electronic	5	8.47%
Print media	6	10.17%
Radio/TV	0	0%
Through VCOG Meetings	2	3.39%
Through Summits like this	10	16.95%
Through Written newsletters and notices	3	5.08%
Through all partner, government, and organiza...	11	18.64%
Through myregion.org	2	3.39%
Other	0	0%
<b>Totals</b>	<b>59</b>	<b>100%</b>



**43.) I think the best way to keep up with trends,**

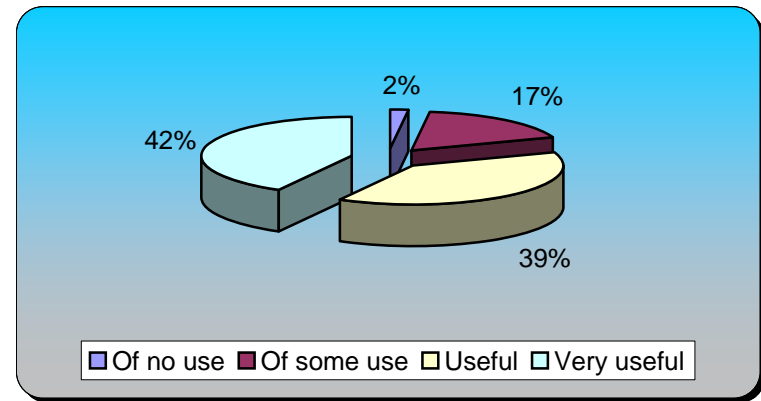
**ideas, and developments regarding Voluisa's growth is:**

	<b>Responses</b>	
Through a central web site or portal	27	31.76%
Through general media – electronic	18	21.18%
Print media	8	9.41%
Radio/TV	0	0%
Through VCOG Meetings	3	3.53%
Through Summits like this	14	16.47%
Through Written newsletters and notices	2	2.35%
Through all partner, government, and organiza...	11	12.94%
Through myregion.org	2	2.35%
Other	0	0%
<b>Totals</b>	<b>85</b>	<b>100%</b>



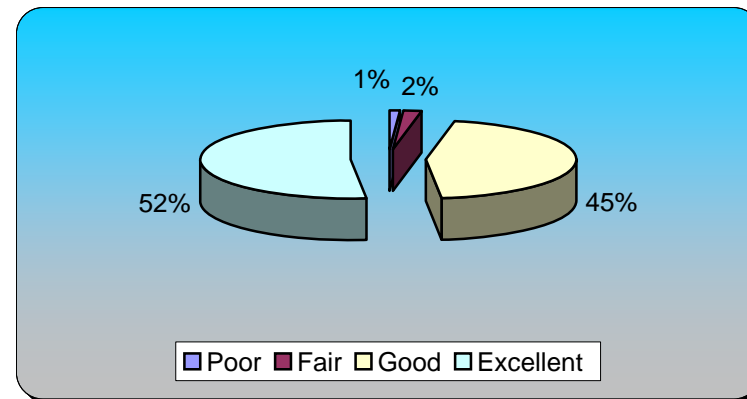
**44.) For me personally - The data, information, and updates provided in this summit were:**

	<b>Responses</b>	
Of no use	2	2.04%
Of some use	17	17.35%
Useful	38	38.78%
Very useful	41	41.84%
<b>Totals</b>	<b>98</b>	<b>100%</b>



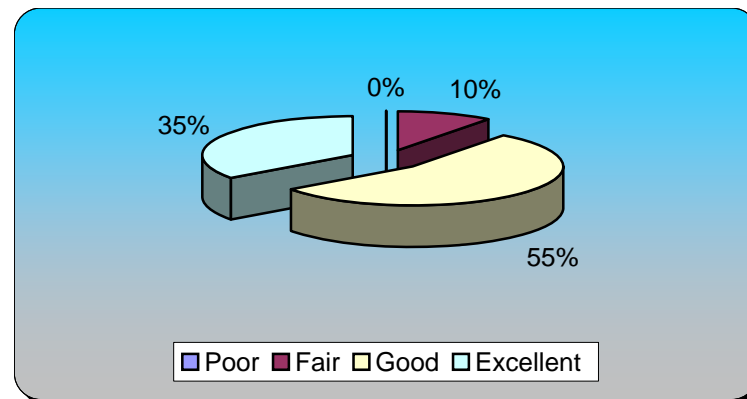
**45.) As a team, Speakers, panelists, and facilitators were:**

	Responses	
Poor	1	1.03%
Fair	2	2.06%
Good	44	45.36%
Excellent	50	51.55%
<b>Totals</b>	<b>97</b>	<b>100%</b>



**46.) Workshops were:**

	Responses	
Poor	0	0%
Fair	10	10.31%
Good	53	54.64%
Excellent	34	35.05%
<b>Totals</b>	<b>97</b>	<b>100%</b>



47.) How did you hear about this Summit?	Responses	
Radio	3	3%
TV	0	0%
Internet Web site driven	3	3%
Internet email from event	34	34%
Internet email from colleagues	20	20%
Print Media – Newspaper	9	9%
Word of Mouth or Phone	9	9%
Written Invitation	3	3%
Recommendation or Notice by Association, Grou...	15	15%
Other	4	4%
<b>Totals</b>	<b>100</b>	<b>100%</b>

